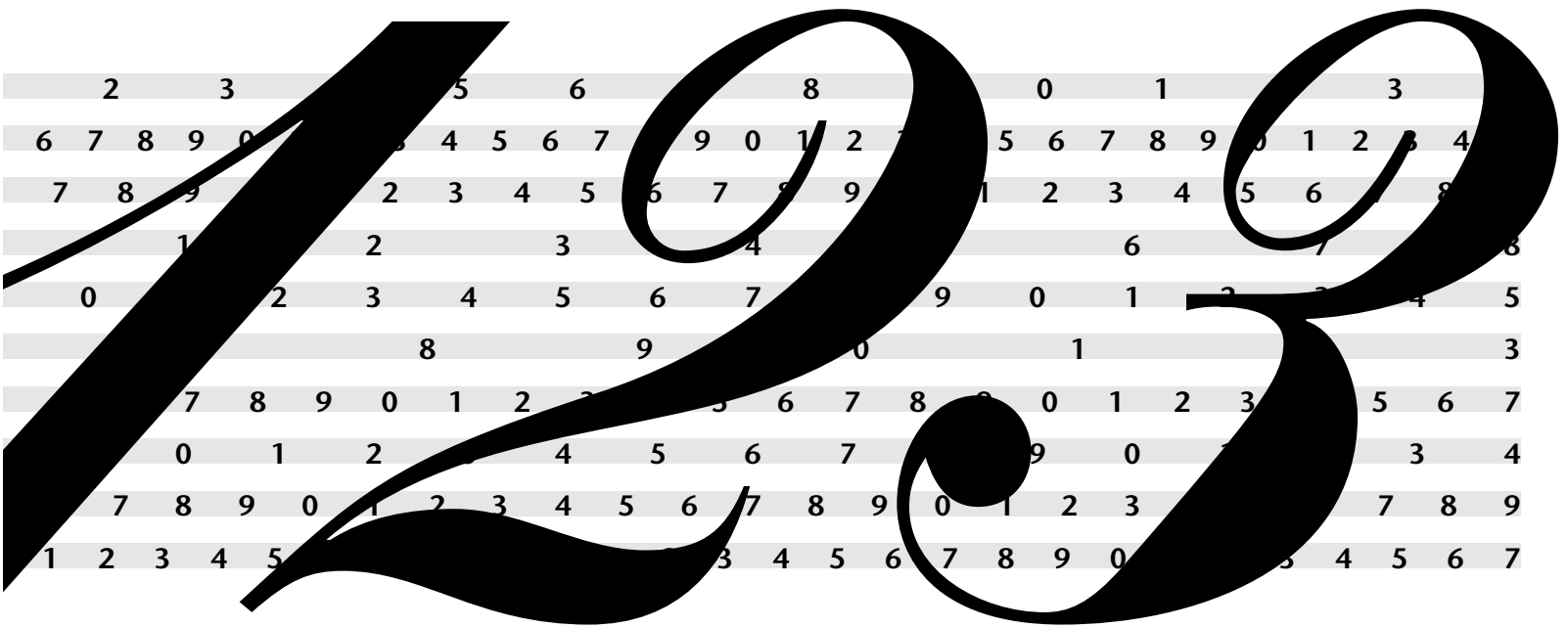


Vital Events-related Statistics



VITAL STATISTICS INFORMATION BOX

ON A TYPICAL DAY IN BRITISH COLUMBIA IN 2001

111 LIVE BIRTHS OCCURRED IN THE PROVINCE TO B.C. RESIDENTS:

- 57 males and 54 females were born
- 56 live births involved maternal complications
- 37 babies had perinatal complications
- 29 were cesarean deliveries
- 7 were pre-term
- 6 were low birth weight babies
- 5 were born to teenage mother
- 22 were born to mothers 35+ years old
- 3 were multiple births
- 8 stillbirths every 10 days

77 DEATHS OCCURRED IN THE PROVINCE TO B.C. RESIDENTS:

- 40 males and 37 females died
- 27 deaths were due to diseases of the circulatory system including:
 - 19 from cardiovascular disease
 - 6 from cerebrovascular disease
- 21 deaths were due to cancer including:
 - 5 lung cancer
 - 2 colorectal cancer
 - 16 female breast cancer every 10 days
 - 15 prostate cancer every 10 days
- 16 deaths were attributable to tobacco smoking
- 8 deaths were due to diseases of the respiratory system including:
 - 3 from pneumonia/influenza
 - 3 from chronic lung disease
- 4 deaths resulted from accidents and violence including:
 - 1 suicide
 - 1 motor vehicle accident
 - 1 homicide every 10 days
- 5 deaths were alcohol-related, 1 directly and 4 indirectly due to alcohol
- 1 death was drug-induced
- 2 deaths were due to diabetes
- 2 deaths were due to Alzheimer's disease
- 1 death was due to vascular/senile dementia
- 3 deaths every 10 days were from HIV disease
- 4 infant deaths every 10 days

56 MARRIAGES WERE SOLEMNIZED IN B.C.:

- 32 were civil ceremonies and 24 were performed by religious representatives
- 35 marriages were to couples where both parties were marrying for the first time
- 2 marriages every 10 days were to couples where both parties were teenagers

Summary

Summary statistics are presented in this section. Historical information allows readers to examine the changes in annual live birth, stillbirth, death, and marriage rates. Tables and graphs show trends in natural population growth, total fertility, infant mortality, and age of bride and groom. Information on vital events by month is also provided.

Since 1950, as the population of British Columbia tripled, demographic and social changes had significant impacts on vital events. Provincial rates for marriages, fertility, live births and stillbirths fell to about half the rates seen in 1950, while mortality rates declined by nearly a third. The most striking change was a dramatic decline in infant mortality.

- In 2001, there were 40,376 live births in the province to B.C. residents. The number of live births decreased by 118 births from 40,494 in 2000. The birth rate, 9.9 live births per 1,000 population, was the lowest birth rate to date.
- There were 28,164 deaths of British Columbia residents in the province in 2001, up 3.2% from the previous year (27,300). The 2001 crude death rate was 6.9 deaths per 1,000 population.
- A total of 20,554 marriages were solemnized in the province in 2001. This number represents a seven percent reduction from the 22,094 marriages in 2000. The marriage rate has shown a downward trend from 9.0 marriages per 1,000 population in 1980 to 5.0 in 2001.
- There were 281 stillbirths to B.C. residents in 2001, the same number as in 2000. The stillbirth rate was 6.9 per 1,000 total births (live births and stillbirths) in 2001.
- In 2001, the 40,376 births and 28,164 deaths in the province produced a rate of natural population growth of 3.0 per 1,000 population. The 2001 rate of natural population growth for B.C. was the lowest since 1950.
- Based on the Total Fertility Rate, the average woman in 2001 would have 1.4 live births in her lifetime. This has been the same fertility rate for the past four years. This is a significant decrease from the peak in 1959, when the average woman would have had nearly 4.0 live births in her child bearing years.
- In 2001, there were 159 infant deaths (age at death less than one year) in the province, for an infant mortality rate of 3.9 per 1,000 live births. In the last eight years, there has been a fairly steady decrease in both the number of infant deaths and the infant mortality rate.
- The average ages of brides and grooms have climbed steadily since 1977. In 2001, the average age of all brides was 32.2 years old, while grooms were 35.0 years old.

TABLE 1
LIVE BIRTHS, DEATHS, MARRIAGES AND STILLBIRTHS
 BRITISH COLUMBIA, 1950–2001

Year	Mid-year Population	Live Births		Deaths		Marriages		Stillbirths	
		Number	Rate	Number	Rate	Number	Rate	Number	Rate
1950	1,137,000	27,116	23.8	11,581	10.2	11,110	9.8	369	13.4
1951	1,165,210	28,077	24.1	11,638	10.0	11,272	9.7	365	12.8
1952	1,205,000	29,827	24.8	12,080	10.0	11,081	9.2	375	12.4
1953	1,248,000	31,746	25.4	12,218	9.8	11,298	9.1	375	11.7
1954	1,295,000	32,946	25.4	12,414	9.6	10,991	8.5	373	11.2
1955	1,342,000	34,138	25.4	12,816	9.5	11,011	8.2	381	11.0
1956	1,398,464	36,241	25.9	13,415	9.6	11,950	8.5	413	11.3
1957	1,482,000	38,744	26.1	13,711	9.3	12,620	8.5	422	10.8
1958	1,538,000	39,577	25.7	13,741	8.9	12,094	7.9	414	10.4
1959	1,567,000	39,971	25.5	14,336	9.1	11,910	7.6	404	10.0
1960	1,602,000	40,116	25.0	14,696	9.2	11,203	7.0	437	10.8
1961	1,629,100	38,591	23.7	14,403	8.8	10,935	6.7	410	10.5
1962	1,660,000	38,128	23.0	14,912	9.0	11,196	6.7	377	9.8
1963	1,699,000	37,478	22.1	15,029	8.8	11,677	6.9	476	12.5
1964	1,745,000	35,897	20.6	16,051	9.2	12,158	7.0	485	13.3
1965	1,797,000	33,669	18.7	15,784	8.8	13,639	7.6	447	13.1
1966	1,873,674	32,502	17.3	16,290	8.7	14,682	7.8	409	12.4
1967	1,945,000	32,899	16.9	16,170	8.3	16,026	8.2	422	12.7
1968	2,003,000	33,687	16.8	16,828	8.4	16,914	8.4	433	12.7
1969	2,060,000	35,383	17.2	17,377	8.4	18,284	8.9	468	13.1
1970	2,128,000	36,861	17.3	17,020	8.0	20,020	9.4	407	10.9
1971	2,184,620	34,852	16.0	17,783	8.1	20,389	9.3	442	12.5
1972	2,241,400	34,563	15.4	18,021	8.0	20,659	9.2	356	10.2
1973	2,302,400	34,352	14.9	18,095	7.9	21,303	9.3	339	9.8
1974	2,375,700	35,450	14.9	19,177	8.1	21,734	9.1	364	10.2
1975	2,433,200	36,281	14.9	19,151	7.9	21,824	9.0	414	11.3
1976	2,466,610	35,848	14.5	18,788	7.6	21,536	8.7	361	10.0
1977	2,493,800	36,691	14.7	18,021	7.2	21,156	8.5	330	8.9
1978	2,530,100	37,231	14.7	19,057	7.5	21,388	8.5	331	8.8
1979	2,571,200	38,432	14.9	19,204	7.5	22,087	8.6	313	8.1
1980	2,640,100	40,104	15.2	19,371	7.3	23,830	9.0	316	7.8
1981	2,744,470	41,679	15.2	19,857	7.2	24,694	9.0	371	8.8
1982	2,787,700	42,942	15.4	20,704	7.4	23,831	8.5	317	7.3
1983	2,813,800	43,047	15.3	19,895	7.1	23,692	8.4	310	7.1
1984	2,847,700	44,040	15.5	20,781	7.3	23,394	8.2	303	6.8
1985	2,990,000	42,989	14.4	21,131	7.1	22,270	7.4	333	7.7
1986	3,020,400	41,845	13.9	21,006	7.0	21,819	7.2	309	7.3
1987	3,064,600	41,655	13.6	21,619	7.1	23,377	7.6	297	7.1
1988	3,128,200	42,913	13.7	22,361	7.1	24,469	7.8	292	6.8
1989	3,209,200	43,585	13.6	22,780	7.1	25,154	7.8	319	7.3
1990	3,300,100	45,333	13.7	23,398	7.1	25,185	7.6	292	6.4
1991	3,379,800	45,308	13.4	23,794	7.0	23,648	7.0	306	6.7
1992	3,476,868	46,048	13.2	24,445	7.0	23,756	6.8	301	6.5
1993	3,571,524	45,931	12.9	25,601	7.2	23,473	6.6	286	6.2
1994	3,681,750	46,850	12.7	25,824	7.0	23,763	6.5	312	6.6
1995	3,784,008	46,702	12.3	26,221	6.9	23,629	6.2	350	7.4
1996	3,882,043	45,955	11.8	27,388	7.1	22,882	5.9	292	6.3
1997	3,959,698	44,399	11.2	27,260	6.9	21,881	5.5	335	7.5
1998	3,997,087	42,865	10.7	27,806	7.0	21,771	5.5	278	6.4
1999	4,028,072	41,743	10.4	27,859	6.9	21,625	5.4	294	7.0
2000	4,058,833	40,494	10.0	27,300	6.7	22,094	5.4	281	6.9
2001	4,095,934	40,376	9.9	28,164	6.9	20,554	5.0	281	6.9

Note: Rates for live births, deaths and marriages are crude rates per 1,000 population.

Stillbirth rates are per 1,000 total births (live births plus stillbirths).

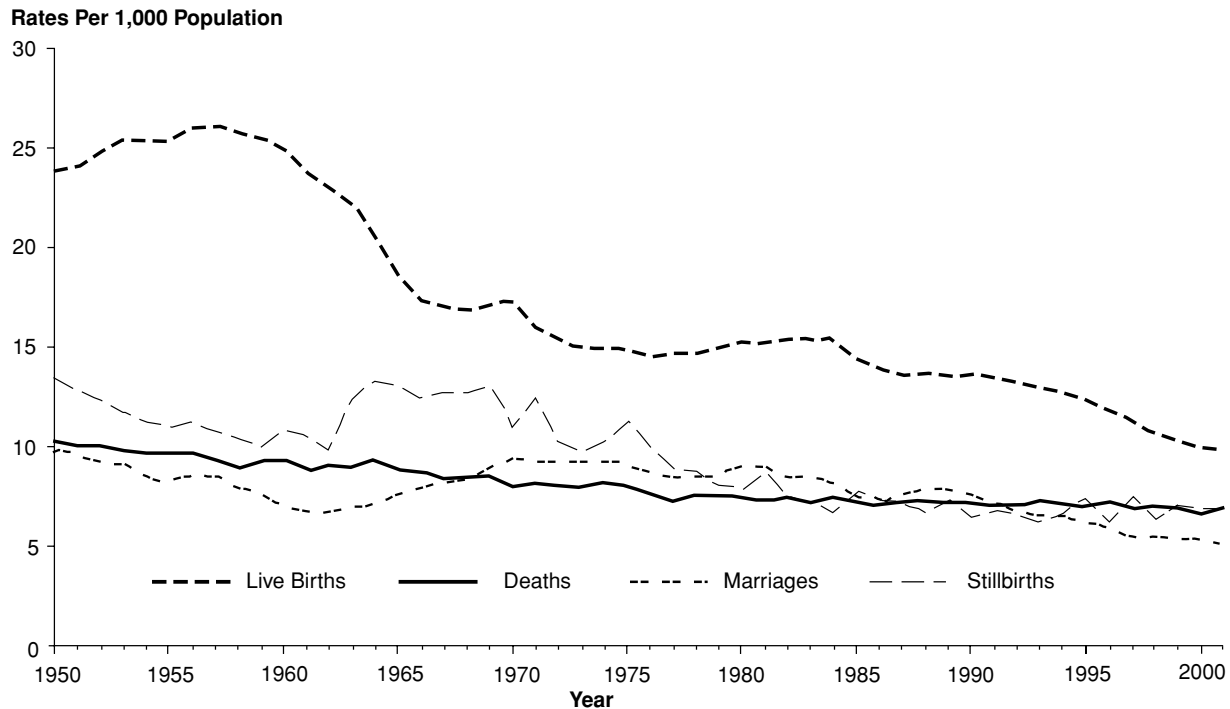
The definition of a stillbirth was revised in 1963 and 1986 (see Glossary).

Population information from BC STATS. Ministry of Management Services.

Above information includes late registrations and amendments.

Gender unknown included. Non-residents are excluded from all data except marriages.

FIGURE 3
**CRUDE RATES OF LIVE BIRTHS, DEATHS,
 MARRIAGES AND STILLBIRTHS**
 BRITISH COLUMBIA, 1950–2001



Note: Stillbirth rate per 1,000 total births.

HIGHLIGHTS TO TABLE 1/FIGURE 3

Since 1950, as the population of British Columbia tripled, demographic and social changes had significant impacts on vital events. Provincial rates for live births, stillbirths, and marriages in 2001 fell to about half the rates seen in 1950, while mortality rates declined by nearly a third.

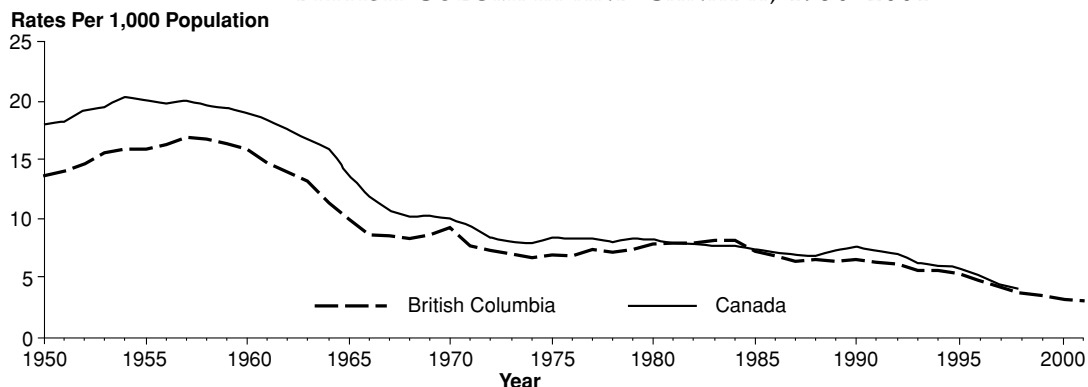
- In 2001, there were 40,376 live births in the province to B.C. residents. The number of live births decreased by 118 births from 40,494 in 2000. The birth rate, 9.9 live births per 1,000 population, was the lowest birth rate to date.
- There were 28,164 deaths of British Columbia residents in the province in 2001, up 3.2% from the previous year (27,300). The 2001 crude death rate was 6.9 deaths per 1,000 population.
- A total of 20,554 marriages were solemnized in the province in 2001. This number represents a seven percent reduction from the 22,094 marriages in 2000. The marriage rate has shown a downward trend from 9.0 marriages per 1,000 population in 1980 to 5.0 in 2001. This latest year was the sixth year in a row that there were fewer than 6.0 marriages per 1,000 population. Marriage statistics in this publication include all marriages that took place in the province, including those where one or both parties were non-B.C. residents.
- There were 281 stillbirths to B.C. residents in 2001, the same number as in 2000. The stillbirth rate was 6.9 per 1,000 total births (live births and stillbirths) in 2001. Stillbirth rates have fluctuated between 6.2 and 7.5 in the last decade.

TABLE 2
TRENDS OF NATURAL POPULATION INCREASES
 BRITISH COLUMBIA AND CANADA, 1950–2001

Year	Rate		Year	Rate	
	B.C.	Canada		B.C.	Canada
1950	13.7	18.0	1976	6.9	8.4
1951	14.1	18.2	1977	7.5	8.4
1952	14.7	19.2	1978	7.2	8.1
1953	15.6	19.5	1979	7.5	8.4
1954	15.9	20.3	1980	7.9	8.3
1955	15.9	20.0	1981	8.0	8.0
1956	16.3	19.8	1982	8.0	7.9
1957	16.9	20.0	1983	8.2	7.8
1958	16.8	19.6	1984	8.2	7.8
1959	16.4	19.4	1985	7.3	7.5
1960	15.9	19.0	1986	6.9	7.2
1961	14.8	18.4	1987	6.5	7.0
1962	14.0	17.6	1988	6.6	7.0
1963	13.2	16.8	1989	6.5	7.4
1964	11.4	15.9	1990	6.6	7.7
1965	10.0	13.7	1991	6.4	7.4
1966	8.7	11.9	1992	6.2	7.1
1967	8.6	10.8	1993	5.7	6.4
1968	8.4	10.2	1994	5.7	6.1
1969	8.7	10.3	1995	5.4	5.7
1970	9.3	10.1	1996	4.8	5.2
1971	7.8	9.5	1997	4.3	4.4
1972	7.4	8.5	1998	3.8	4.1
1973	7.1	8.1	1999	3.5	3.8
1974	6.8	8.0	2000	3.2	*
1975	7.0	8.5	2001	3.0	*

Note: Rates of natural population increase per 1,000 population. Canadian rates from Statistics Canada. *Rates were not available. Non-residents are excluded.

FIGURE 4
TRENDS OF NATURAL POPULATION INCREASES
 BRITISH COLUMBIA AND CANADA, 1950–2001



Note: 1999, 2000 and 2001 rates for Canada were not available.

HIGHLIGHTS TO TABLE 2/FIGURE 4

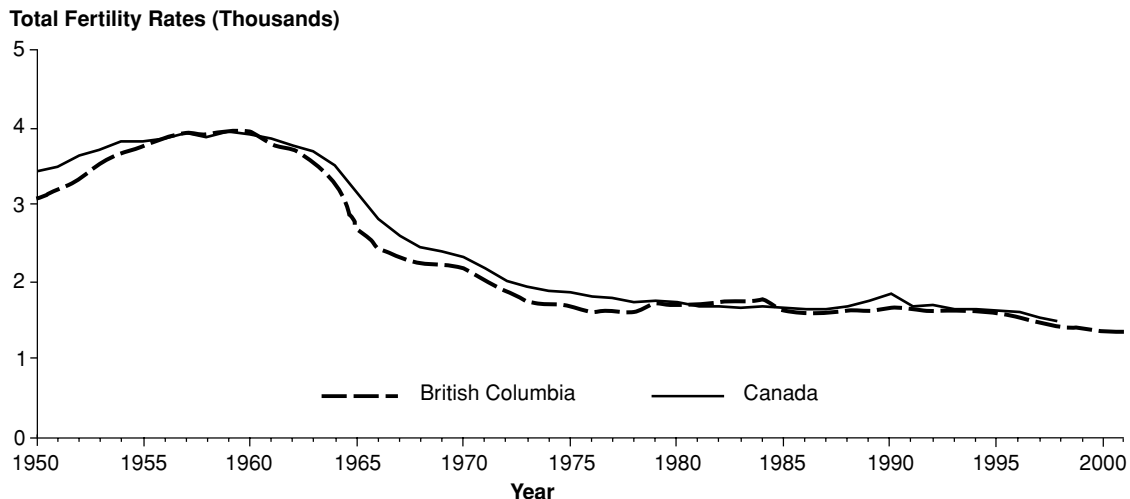
- In 2001, the 40,376 births and 28,164 deaths in the province produced a rate of natural population growth of 3.0 per 1,000 population. Immigration and emigration are not included in natural population growth rates.
- The pattern of natural population growth rates over the last five decades follows trends seen in the provincial birth rates. After high rates in the 1950s, natural population growth rates decreased rapidly in the 1960s as birth and death rates both declined. Since the mid 1980s, the small but steady decline in the natural population growth rate resulted from declining birth rates and relatively stable death rates. The 2001 natural population growth rate for B.C. was the lowest since 1950, and the fourth year in a row with a rate below 4.0 per 1,000 population.
- Except for four years from 1981 to 1984, the B.C. rate of natural population growth has been consistently below the Canadian rate each year.

TABLE 3
TRENDS OF TOTAL FERTILITY RATES
 BRITISH COLUMBIA AND CANADA, 1950–2001

Year	Rate		Year	Rate	
	B.C.	Canada		B.C.	Canada
1950	3,074	3,455	1976	1,618	1,820
1951	3,201	3,503	1977	1,636	1,801
1952	3,327	3,641	1978	1,620	1,751
1953	3,542	3,721	1979	1,721	1,757
1954	3,656	3,822	1980	1,716	1,738
1955	3,748	3,823	1981	1,718	1,699
1956	3,875	3,853	1982	1,749	1,687
1957	3,921	3,923	1983	1,751	1,675
1958	3,900	3,881	1984	1,781	1,684
1959	3,958	3,941	1985	1,642	1,673
1960	3,949	3,904	1986	1,602	1,662
1961	3,785	3,852	1987	1,598	1,647
1962	3,709	3,769	1988	1,636	1,692
1963	3,564	3,683	1989	1,638	1,768
1964	3,284	3,515	1990	1,673	1,863
1965	2,710	3,157	1991	1,653	1,699
1966	2,442	2,821	1992	1,642	1,710
1967	2,307	2,601	1993	1,636	1,658
1968	2,228	2,459	1994	1,638	1,663
1969	2,223	2,409	1995	1,604	1,639
1970	2,185	2,336	1996	1,540	1,624
1971	1,994	2,188	1997	1,473	1,552
1972	1,890	2,025	1998	1,437	1,539
1973	1,751	1,939	1999	1,409	1,527
1974	1,735	1,887	2000	1,380	*
1975	1,682	1,871	2001	1,373	*

Note: Total Fertility Rate - Sum of age-specific fertility rates multiplied by the number of years in each age group (see Glossary for definition). Canadian rates from Statistics Canada.
 B.C. rates per 1,000 women age 15 to 44. Canadian rates per 1,000 women age 15 to 49.
 *Rates were not available. Non-residents are excluded.

FIGURE 5
TRENDS OF TOTAL FERTILITY RATES
 BRITISH COLUMBIA AND CANADA, 1950–2001



Note: 1999, 2000 and 2001 rates for Canada were not available.

HIGHLIGHTS TO TABLE 3/FIGURE 5

- In 2001, the Total Fertility Rate (TFR) for B.C. was 1,373 births per 1,000 women of child bearing age (15 to 44 years of age).
- Based on the Total Fertility Rate, the average woman in 2001 would have 1.4 live births in her lifetime. This has been the same fertility rate for the past four years. This is a significant decrease from the peak in 1959, when the average woman would have had nearly 4.0 live births in her child bearing years.

TABLE 4
TRENDS OF INFANT MORTALITY
BRITISH COLUMBIA AND CANADA, 1965–2001

Year	British Columbia Age at Death (in Days)									Canada
	0–6 Days		0–27 Days		28–364 Days		N.S.	Total		Rate
	Number	Rate	Number	Rate	Number	Rate		Number	Rate	
1965	415	12.3	453	13.5	227	6.7	3	683	20.3	24.0
1966	435	13.4	494	15.2	263	8.1	4	761	23.4	23.1
1967	429	13.0	470	14.3	218	6.6	1	689	20.9	22.0
1968	375	11.1	438	13.0	214	6.4	4	656	19.5	21.0
1969	329	9.3	374	10.6	199	5.6	–	573	16.2	19.0
1970	369	10.0	416	11.3	193	5.2	2	611	16.6	19.0
1971	409	11.7	450	12.9	185	5.3	–	635	18.2	17.5
1972	322	9.3	373	10.8	195	5.6	1	569	16.5	17.0
1973	317	9.2	363	10.6	185	5.4	3	551	16.0	16.0
1974	310	8.7	348	9.8	196	5.5	2	546	15.4	15.0
1975	278	7.7	321	8.8	169	4.7	1	491	13.5	14.3
1976	292	8.1	324	9.0	152	4.2	2	478	13.3	13.5
1977	246	6.7	276	7.5	200	5.5	–	476	13.0	12.4
1978	245	6.6	286	7.7	178	4.8	–	464	12.5	12.0
1979	196	5.1	239	6.2	167	4.3	–	406	10.6	10.9
1980	188	4.7	235	5.9	186	4.6	–	421	10.5	10.4
1981	232	5.6	259	6.2	140	3.4	3	402	9.6	9.6
1982	217	5.1	251	5.8	150	3.5	–	401	9.3	9.1
1983	193	4.5	212	4.9	145	3.4	2	359	8.3	8.5
1984	184	4.2	205	4.6	150	3.4	1	356	8.1	8.1
1985	180	4.2	198	4.6	133	3.1	–	331	7.7	8.0
1986	166	4.0	196	4.7	147	3.5	–	343	8.2	7.9
1987	162	3.9	197	4.7	156	3.7	–	353	8.5	7.3
1988	190	4.4	219	5.1	137	3.2	–	356	8.3	7.2
1989	186	4.3	215	4.9	138	3.2	–	353	8.1	7.3
1990	187	4.1	225	5.0	106	2.3	–	331	7.3	6.8
1991	137	3.0	161	3.6	126	2.8	–	287	6.3	6.4
1992	152	3.3	174	3.8	101	2.2	–	275	6.0	6.1
1993	122	2.7	139	3.0	111	2.4	–	250	5.4	6.3
1994	176	3.8	198	4.2	90	1.9	–	288	6.1	6.3
1995	158	3.4	181	3.9	94	2.0	–	275	5.9	6.1
1996	133	2.9	160	3.5	68	1.5	–	228	5.0	5.6
1997	125	2.8	146	3.3	56	1.3	–	202	4.5	5.5
1998	94	2.2	114	2.7	60	1.4	–	174	4.1	5.3
1999	84	2.0	107	2.6	51	1.2	–	158	3.8	5.3
2000	82	2.0	104	2.6	45	1.1	–	149	3.7	*
2001	99	2.5	123	3.0	36	0.9	–	159	3.9	*

Note: Rates per 1,000 live births in the specified year.

N.S. – Not stated.

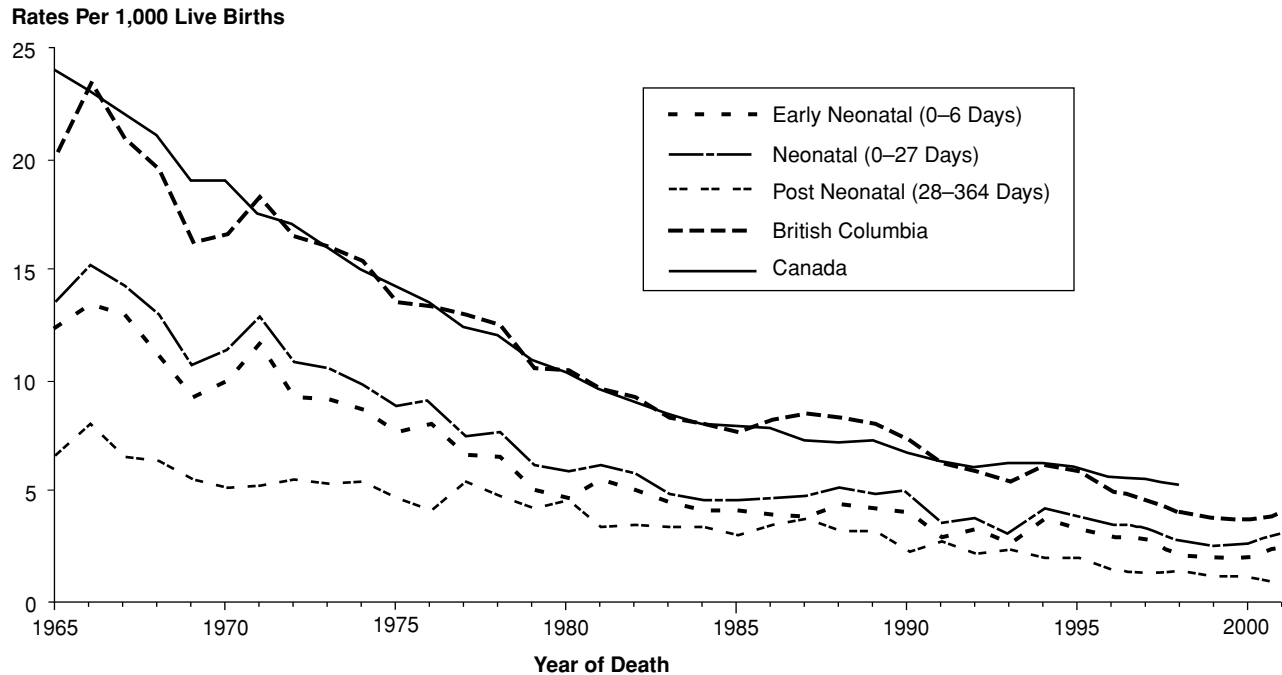
Above information includes late registrations and amendments.

Canadian rates from Statistics Canada.

*Rates were not available.

Non-residents are excluded.

FIGURE 6
TRENDS OF INFANT MORTALITY
 BRITISH COLUMBIA AND CANADA, 1965–2001



Note: 1999, 2000 and 2001 rates for Canada were not available.
 Non-residents are excluded.

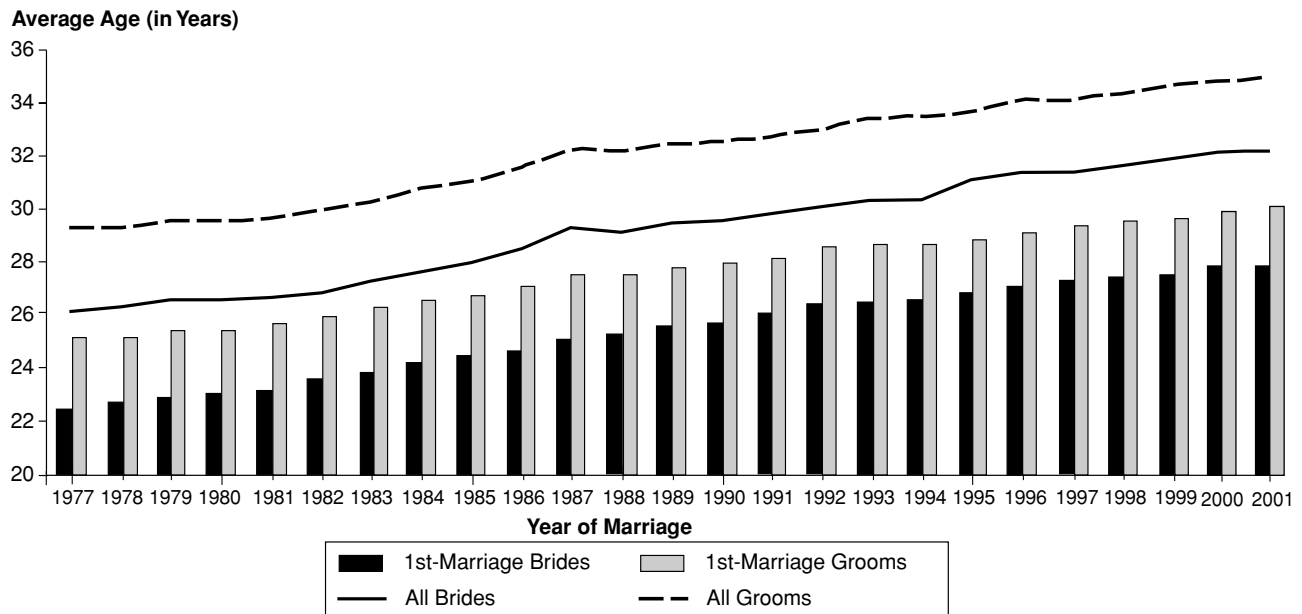
HIGHLIGHTS TO TABLE 4/FIGURE 6

- In 2001, there were 159 infant deaths (age at death less than one year) in the province, for an infant mortality rate of 3.9 per 1,000 live births. This is a slight increase from 149 infant deaths and an infant mortality rate of 3.7 per 1,000 live births in 2000. In the last eight years, there has been a fairly steady decrease in both the number of infant deaths and the infant mortality rate.
- Since 1991, the B.C. infant mortality rate has been consistently below the Canadian rate.
- Out of the 159 infant deaths in 2001:
 - 99 were in the early neonatal period (age at death less than 7 days)
 - 24 died between 7 and 27 days after birth
 - 36 were in the post-neonatal period (age at death 28–364 days).
- Infant mortality rates in B.C. have fallen dramatically to almost one fifth of the rates seen in 1965. Decreases in early neonatal mortality (age at death less than seven days) and neonatal mortality (age at death less than 28 days) have been major contributors to the overall decline in infant mortality rates over this time period. In Canada infant mortality rates have fallen to approximately one fifth of the rates seen in 1965.
- Perinatal mortality refers to fetal deaths (stillbirths) and early neonatal deaths (age at death less than 7 days). Since the causes of stillbirths and early neonatal deaths are often similar, the perinatal mortality rate is used as a health status measure.
- Post neonatal deaths decreased from 94 in 1995 to 36 in 2001 and the post neonatal mortality rate declined from 2.0 to 0.9 deaths per 1,000 live births. The 2001 post neonatal statistic was the lowest ever recorded in British Columbia.

TABLE 5
TRENDS IN AGE OF BRIDE AND GROOM
BRITISH COLUMBIA, 1977-2001

Year of Marriage	Average Age (in Years)				Year of Marriage	Average Age (in Years)			
	First Marriage		All Marriages			First Marriage		All Marriages	
	Bride	Groom	Bride	Groom		Bride	Groom	Bride	Groom
1977	22.5	25.2	26.2	29.3	1990	25.7	28.0	29.6	32.6
1978	22.7	25.2	26.3	29.3	1991	26.1	28.2	29.9	32.8
1979	22.9	25.5	26.6	29.6	1992	26.4	28.6	30.1	33.0
1980	23.1	25.5	26.6	29.6	1993	26.5	29.0	30.4	33.4
1981	23.2	25.7	26.7	29.7	1994	26.6	28.9	30.4	33.5
1982	23.6	26.0	26.9	30.0	1995	26.8	29.1	31.1	33.6
1983	23.9	26.3	27.3	30.3	1996	27.2	29.2	31.4	34.1
1984	24.2	26.6	27.7	30.8	1997	27.3	29.4	31.3	34.1
1985	24.5	26.8	28.0	31.1	1998	27.5	29.6	31.6	34.4
1986	24.7	27.1	28.5	31.6	1999	27.7	29.8	31.8	34.7
1987	25.1	27.6	29.3	32.3	2000	27.9	30.0	32.1	34.8
1988	25.3	27.6	29.2	32.2	2001	27.9	30.1	32.2	35.0
1989	25.6	27.8	29.5	32.5					

FIGURE 7
TRENDS IN AGE OF BRIDE AND GROOM
BRITISH COLUMBIA, 1977-2001



HIGHLIGHTS TO TABLE 5/FIGURE 7

- In 2001, the average age of first marriage brides was 27.9 years old, while first marriage grooms were, on average, 30.1 years old.
- In recent decades, there has been a steady increase in the average age of first marriages. First marriage brides in 2001 were 5.4 years older than first marriage brides in 1977, while first marriage grooms were 4.9 years older than first marriage grooms in 1977.
- The average ages of brides and grooms, for first and later marriages combined, have climbed steadily since 1977. In 2001, the average age of all brides was 32.2 years old, while grooms were 35.0 years old.

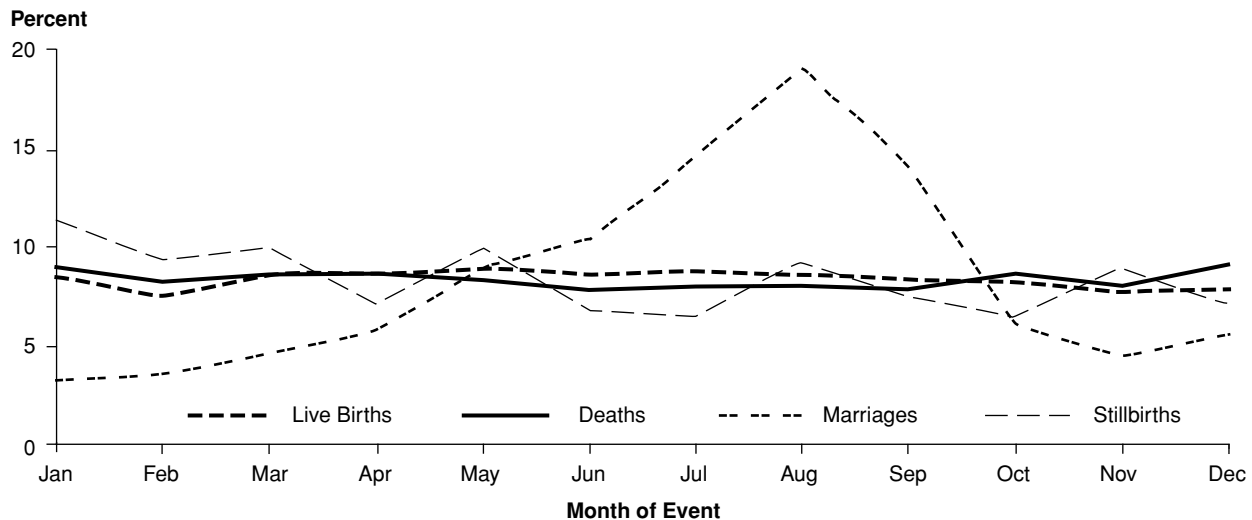
TABLE 6
LIVE BIRTHS, DEATHS, MARRIAGES AND STILLBIRTHS BY MONTH
BRITISH COLUMBIA, 2001

Month	Live Births		Deaths		Marriages		Stillbirths	
	Number	Percent	Number	Percent	Number	Percent	Number	Percent
January	3,436	8.5	2,544	9.0	657	3.2	32	11.4
February	3,009	7.5	2,308	8.2	728	3.5	26	9.3
March	3,441	8.5	2,424	8.6	936	4.6	28	10.0
April	3,481	8.6	2,415	8.6	1,179	5.7	20	7.1
May	3,587	8.9	2,347	8.3	1,825	8.9	28	10.0
June	3,480	8.6	2,211	7.9	2,144	10.4	19	6.8
July	3,530	8.7	2,253	8.0	2,979	14.5	18	6.4
August	3,488	8.6	2,262	8.0	3,931	19.1	26	9.3
September	3,372	8.4	2,217	7.9	2,892	14.1	21	7.5
October	3,286	8.1	2,434	8.6	1,253	6.1	18	6.4
November	3,095	7.7	2,251	8.0	908	4.4	25	8.9
December	3,171	7.9	2,498	8.9	1,122	5.5	20	7.1
Total residents	40,376	100.0	28,164	100.0	20,554	100.0	281	100.0
Non-residents	156		284				1	
TOTAL	40,532		28,448		20,554		282	

Note: Total percentage may not add up to 100 due to rounding.

*Marriage counts by month are based on event place and include non-residents.

FIGURE 8
LIVE BIRTHS, DEATHS, MARRIAGES AND STILLBIRTHS BY MONTH
BRITISH COLUMBIA, 2001



HIGHLIGHTS TO TABLE 6/FIGURE 8

- Of vital events in the province, only marriages show a seasonal distribution. In 2001, the most popular month to marry was August, with almost one fifth (19.1%) of the year's total marriages. The summer months, from May to September, were chosen by two thirds (67.0%) of 2001's brides and grooms. January was the least popular month for marriages in 2001.
- Live births were generally evenly distributed over the twelve months in 2001. May had the largest number of live births, while February had the lowest number.
- The highest number of deaths in 2001 occurred in January and the lowest numbers occurred in June.
- In 2001, the largest number of stillbirths was in January.

