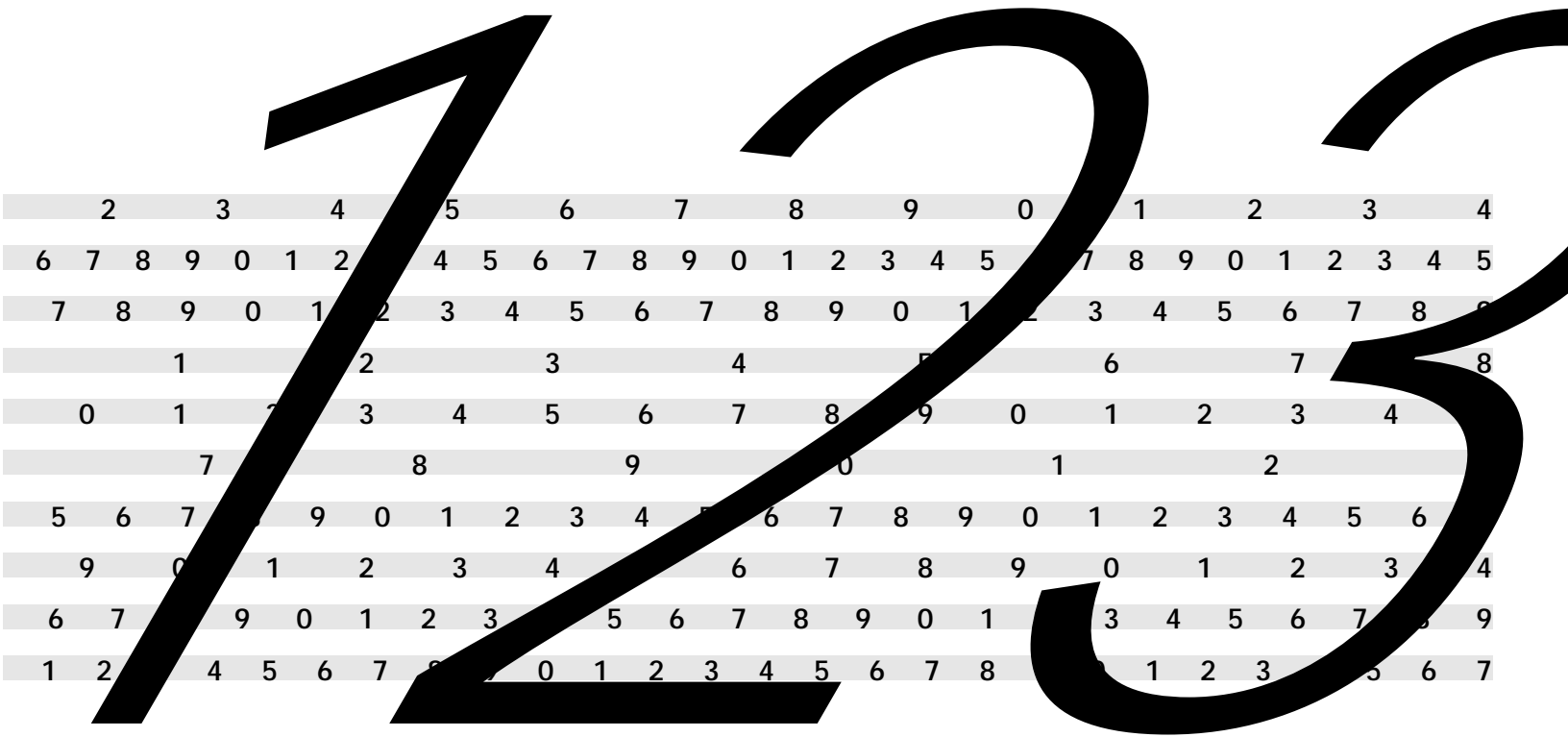


Vital Events-related Statistics



VITAL STATISTICS INFORMATION BOX

ON A TYPICAL DAY IN BRITISH COLUMBIA IN 1999

114 LIVE BIRTHS OCCURRED IN THE PROVINCE TO B.C. RESIDENTS:

- 59 males and 55 females were born
- 55 live births involved maternal complications
- 37 babies had perinatal complications
- 25 were cesarean deliveries
- 7 were pre-term
- 5 were low birth weight babies
- 5 were born to teenage mothers
- 20 were born to mothers 35+ years old
- 3 were multiple births
- 8 stillbirths every 10 days

76 DEATHS OCCURRED IN THE PROVINCE TO B.C. RESIDENTS:

- 40 males and 36 females died
- 27 deaths were due to diseases of the circulatory system including:
 - 19 deaths from heart diseases
 - 6 deaths from cerebrovascular diseases
- 21 deaths were due to cancer including:
 - 5 lung cancer
 - 2 colorectal cancer
 - 2 breast cancer
 - 1 prostate cancer
- 16 deaths were attributable to tobacco smoking
- 9 deaths were due to diseases of the respiratory system including:
 - 4 deaths from pneumonia/influenza
 - 3 deaths from chronic lung disease
- 5 deaths resulted from accidents and violence including:
 - 1 suicide
 - 1 motor vehicle traffic accident fatality
 - 1 homicide every 10 days
- 5 deaths were alcohol-related, 1 directly and 4 indirectly due to alcohol
- 1 death was drug-induced
- 2 deaths were due to diabetes
- 2 deaths were due to Alzheimer's disease and senile dementias
- 3 deaths every 10 days were from AIDS/HIV infections
- 4 infant deaths every 10 days

59 MARRIAGES WERE SOLEMNIZED IN B.C.:

- 33 were civil ceremonies and 26 were performed by religious representatives
- 36 marriages were to couples where both parties were marrying for the first time
- 3 marriages every 10 days were to couples where both parties were teenagers

Summary

The sources of data for the British Columbia Vital Statistics Agency originate with the registrations of birth, death, and marriage. These are based on information provided to the Agency by parents, physicians, midwives, coroners, funeral directors, religious representatives, and marriage commissioners. This information is used by the Agency to register vital events, to issue certificates of birth, death and marriage, and to produce statistical reports. This information is of particular interest to health-care planners, managers, and service providers; it assists in the analysis of trends and the development of service plans for the future.

In the last half of the twentieth century, as the population of British Columbia tripled, demographic and social changes had significant impacts on vital events. Provincial rates for marriages, fertility, and births fell to about half the rates seen in 1950, while mortality rates declined by nearly a third. The most striking change was a dramatic decline in infant mortality.

- There were 41,739 live births to B.C. residents in the province in 1999. This represented a decrease of 2.6% from 42,856 live births in 1998. The 1999 live birth rate of 10.4 per 1,000 population was the lowest since 1950, and was less than half of the rates seen five decades ago.
- Based on provincial Total Fertility Rates (TFR), the average woman in 1999 would have 1.4 live births in her lifetime, the lowest fertility rate in recent years. This is a significant decrease from the peak in 1959, when the average woman would have had 4.0 live births in her child bearing years.
- In 1999, there were 156 infant deaths (age at death less than one year) in the province for an infant mortality rate of 3.7 per 1,000 live births, a record low rate for British Columbia. This was a decrease from 174 infant deaths in 1998. Infant mortality rates in B.C. have fallen dramatically to approximately one fifth of the rates seen thirty years ago.
- There were 294 stillbirths to B.C. residents in 1999, an increase from 278 in 1998. The stillbirth rate was 7.0 per 1,000 total births (live births and stillbirths) in 1999. The stillbirth rates have fluctuated widely between 6.2 and 7.5 in the last decade.
- There were 27,794 deaths in British Columbia in 1999, 11 deaths less than the previous year. There were 6.9 deaths per 1,000 population, unchanged since 1997. The death rate has decreased each decade from the 1950s to the 1990s, and has been consistently under 7.3 per 1,000 population since 1985.
- In 1999, the 41,739 live births and 27,794 deaths in B.C. produced a rate of natural population increase of 3.5 per 1,000 population. The natural population increase rate in 1999 was the lowest rate since 1950.
- The 1995–1999 average life expectancy at birth in B.C. was 79.2 years for both genders combined; 76.5 for males and 82.0 for females (Appendix 1).
- There were 21,616 marriages solemnized in the province in 1999. The 1999 marriage rate, 5.4 marriages per 1,000 population, was the same as 1998 and the lowest rate since 1950. In recent decades, there has been a trend towards delaying first marriages. The 1999 average age of first marriage brides was 27.7 years old, while first-marriage grooms were, on average, 29.8 years old. The average age of brides and grooms for first and later marriages combined also increased steadily in the past two decades.

TABLE 1
LIVE BIRTHS, DEATHS, MARRIAGES AND STILLBIRTHS
BRITISH COLUMBIA, 1950-1999

Year	Mid-year Population	Live Births		Deaths		Marriages		Stillbirths	
		Number	Rate	Number	Rate	Number	Rate	Number	Rate
1950	1,137,000	27,116	23.8	11,581	10.2	11,110	9.8	369	13.4
1951	1,165,210	28,077	24.1	11,638	10.0	11,272	9.7	365	12.8
1952	1,205,000	29,827	24.8	12,080	10.0	11,081	9.2	375	12.4
1953	1,248,000	31,746	25.4	12,218	9.8	11,298	9.1	375	11.7
1954	1,295,000	32,946	25.4	12,414	9.6	10,991	8.5	373	11.2
1955	1,342,000	34,138	25.4	12,816	9.5	11,011	8.2	381	11.0
1956	1,398,464	36,241	25.9	13,415	9.6	11,950	8.5	413	11.3
1957	1,482,000	38,744	26.1	13,711	9.3	12,620	8.5	422	10.8
1958	1,538,000	39,577	25.7	13,741	8.9	12,094	7.9	414	10.4
1959	1,567,000	39,971	25.5	14,336	9.1	11,910	7.6	404	10.0
1960	1,602,000	40,116	25.0	14,696	9.2	11,203	7.0	437	10.8
1961	1,629,100	38,591	23.7	14,403	8.8	10,935	6.7	410	10.5
1962	1,660,000	38,128	23.0	14,912	9.0	11,196	6.7	377	9.8
1963	1,699,000	37,478	22.1	15,029	8.8	11,677	6.9	476	12.5
1964	1,745,000	35,897	20.6	16,051	9.2	12,158	7.0	485	13.3
1965	1,797,000	33,669	18.7	15,784	8.8	13,639	7.6	447	13.1
1966	1,873,674	32,502	17.3	16,290	8.7	14,682	7.8	409	12.4
1967	1,945,000	32,899	16.9	16,170	8.3	16,026	8.2	422	12.7
1968	2,003,000	33,687	16.8	16,828	8.4	16,914	8.4	433	12.7
1969	2,060,000	35,383	17.2	17,377	8.4	18,284	8.9	468	13.1
1970	2,128,000	36,861	17.3	17,020	8.0	20,020	9.4	407	10.9
1971	2,184,620	34,852	16.0	17,783	8.1	20,389	9.3	442	12.5
1972	2,241,400	34,563	15.4	18,021	8.0	20,659	9.2	356	10.2
1973	2,302,400	34,352	14.9	18,095	7.9	21,303	9.3	339	9.8
1974	2,375,700	35,450	14.9	19,177	8.1	21,734	9.1	364	10.2
1975	2,433,200	36,281	14.9	19,151	7.9	21,824	9.0	414	11.3
1976	2,466,610	35,848	14.5	18,788	7.6	21,536	8.7	361	10.0
1977	2,493,800	36,691	14.7	18,021	7.2	21,156	8.5	330	8.9
1978	2,530,100	37,231	14.7	19,057	7.5	21,388	8.5	331	8.8
1979	2,571,200	38,432	14.9	19,204	7.5	22,087	8.6	313	8.1
1980	2,640,100	40,104	15.2	19,371	7.3	23,830	9.0	316	7.8
1981	2,744,470	41,679	15.2	19,857	7.2	24,694	9.0	371	8.8
1982	2,787,700	42,942	15.4	20,704	7.4	23,831	8.5	317	7.3
1983	2,813,800	43,047	15.3	19,895	7.1	23,692	8.4	310	7.1
1984	2,847,700	44,040	15.5	20,781	7.3	23,394	8.2	303	6.8
1985	2,990,000	42,989	14.4	21,131	7.1	22,270	7.4	333	7.7
1986	3,020,400	41,845	13.9	21,006	7.0	21,819	7.2	309	7.3
1987	3,064,600	41,655	13.6	21,619	7.1	23,377	7.6	297	7.1
1988	3,128,200	42,913	13.7	22,361	7.1	24,469	7.8	292	6.8
1989	3,209,200	43,585	13.6	22,780	7.1	25,154	7.8	319	7.3
1990	3,300,100	45,333	13.7	23,398	7.1	25,185	7.6	292	6.4
1991	3,379,800	45,308	13.4	23,794	7.0	23,648	7.0	306	6.7
1992	3,476,868	46,048	13.2	24,445	7.0	23,756	6.8	301	6.5
1993	3,571,524	45,931	12.9	25,601	7.2	23,473	6.6	286	6.2
1994	3,681,750	46,850	12.7	25,824	7.0	23,763	6.5	312	6.6
1995	3,784,008	46,707	12.3	26,219	6.9	23,624	6.2	350	7.4
1996	3,882,043	45,954	11.8	27,389	7.1	22,879	5.9	292	6.3
1997	3,961,400	44,391	11.2	27,259	6.9	21,876	5.5	335	7.5
1998	4,002,777	42,856	10.7	27,805	6.9	21,764	5.4	278	6.4
1999	4,029,253	41,739	10.4	27,794	6.9	21,616	5.4	294	7.0

Note: Rates shown for births, deaths and marriages are crude rates per 1,000 population.

Stillbirth rate is per 1,000 total births (live births plus stillbirths).

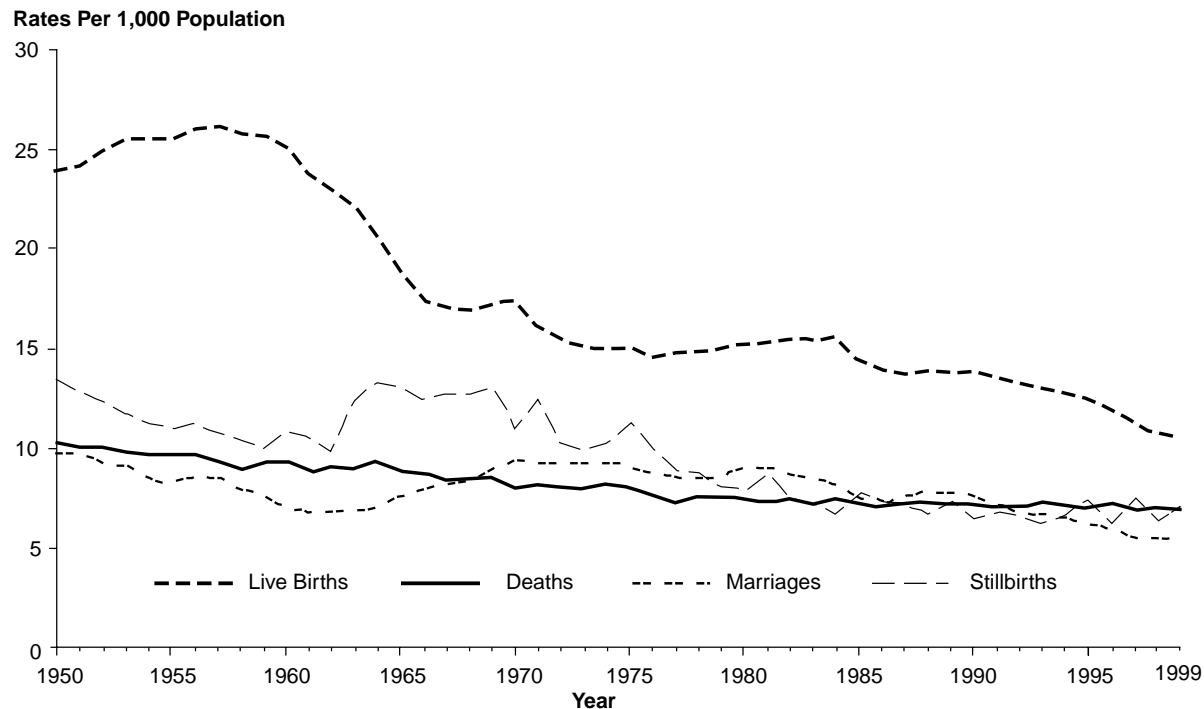
The definition of a stillbirth was revised in 1963 and 1986 (see glossary).

Population information from PEOPLE 24 Estimates (BCSTATS).

Above information includes late registrations and amendments.

Gender unknown included. Non-residents are excluded from all data except marriages.

FIGURE 3
CRUDE RATES OF LIVE BIRTHS, DEATHS,
MARRIAGES AND STILLBIRTHS
BRITISH COLUMBIA, 1950–1999



Note: Stillbirth rate per 1,000 total births.

HIGHLIGHTS TO TABLE 1/FIGURE 3

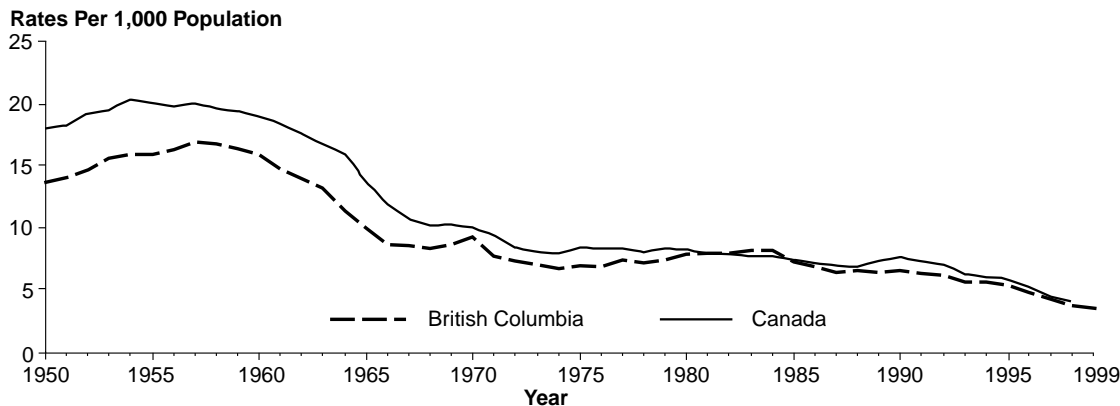
- British Columbia's 1999 vital events continued to follow recent trends. As a result of social and demographic changes since 1950, the population of the province has more than tripled, the live birth and stillbirth rates have decreased by 56.3% and 47.8% respectively, the marriage rate has declined by 44.9%, and there has been a 32.4% decrease in the death rate.
- In 1999, there were 41,739 live births in the province to B.C. residents, 21,540 males and 20,199 females. The number of live births decreased by 1,117 births from 42,856 in 1998. The crude birth rate, 10.4 live births per 1,000 population, was the lowest birth rate to date, and was less than half of the birth rate of the 1950s.
- In 1999, there were 27,794 deaths of British Columbia residents in the province, down slightly from the previous year (27,805). The 1999 crude death rate, 6.9 deaths per 1,000 population, was unchanged from the 1998 rate.
- There were 21,616 marriages were solemnized in the province in 1999. This represents a slight decrease from 21,764 marriages in 1998, and a 14.2% decline from the peak of 25,185 marriages in 1990. The crude marriage rate has shown a consistent downward trend in the last two decades, from 9.0 marriages per 1,000 population in 1980 to 5.4 in 1998 and 1999. This latest year was the fourth year in a row that there were fewer than 6.0 marriages per 1,000 population. Marriage statistics in this publication include all marriages that took place in the province, including those where one or both parties were non-B.C. residents.
- There were 294 stillbirths to B.C. residents in 1999, an increase from 278 in 1998. The crude stillbirth rate was 7.0 per 1,000 total births (live births and stillbirths) in 1999. The stillbirth rates have fluctuated widely between 6.2 and 7.5 in the last decade.

TABLE 2
TRENDS OF NATURAL POPULATION INCREASES
BRITISH COLUMBIA AND CANADA, 1950–1999

Year	Rate		Year	Rate	
	B.C.	Canada		B.C.	Canada
1950	13.7	18.0	1975	7.0	8.5
1951	14.1	18.2	1976	6.9	8.4
1952	14.7	19.2	1977	7.5	8.4
1953	15.6	19.5	1978	7.2	8.1
1954	15.9	20.3	1979	7.5	8.4
1955	15.9	20.0	1980	7.9	8.3
1956	16.3	19.8	1981	8.0	8.0
1957	16.9	20.0	1982	8.0	7.9
1958	16.8	19.6	1983	8.2	7.8
1959	16.4	19.4	1984	8.2	7.8
1960	15.9	19.0	1985	7.3	7.5
1961	14.8	18.4	1986	6.9	7.2
1962	14.0	17.6	1987	6.5	7.0
1963	13.2	16.8	1988	6.6	7.0
1964	11.4	15.9	1989	6.5	7.4
1965	10.0	13.7	1990	6.6	7.7
1966	8.7	11.9	1991	6.4	7.4
1967	8.6	10.8	1992	6.2	7.1
1968	8.4	10.2	1993	5.7	6.4
1969	8.7	10.3	1994	5.7	6.1
1970	9.3	10.1	1995	5.4	5.7
1971	7.8	9.5	1996	4.8	5.2
1972	7.4	8.5	1997	4.3	4.4
1973	7.1	8.1	1998	3.8	4.1
1974	6.8	8.0	1999	3.5	*

Note: Rates shown are rates of natural population increase per 1,000 population. Canadian rates from Statistics Canada. *1999 rate for Canada was not available. Non-residents are excluded.

FIGURE 4
TRENDS OF NATURAL POPULATION INCREASES
BRITISH COLUMBIA AND CANADA, 1950–1999



Note: 1999 rate for Canada was not available.

HIGHLIGHTS TO TABLE 2/FIGURE 4

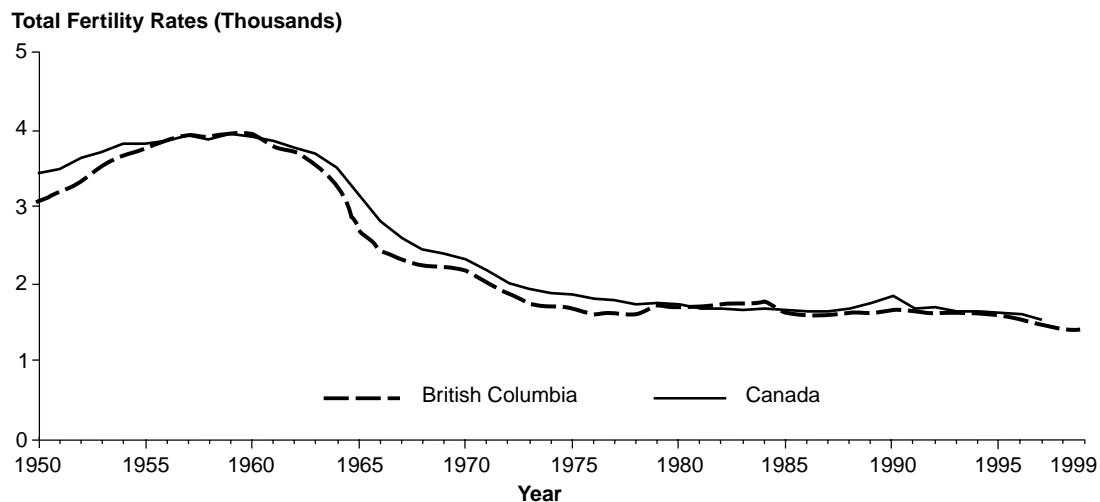
- In 1999, the 41,739 births and 27,794 deaths in the province produced a rate of natural population increase of 3.5 per 1,000 population. Immigration and emigration are not included in natural population increase rates.
- The pattern of rates of natural population increase over the last five decades follows trends set in the provincial crude birth rates. After high rates in the 1950s, natural population growth rates decreased rapidly in the 1960s as birth rates and death rates both declined. Since the mid 1980s, the small but steady decline in the natural population growth rate resulted from the declining birth rate and relatively stable death rates. The 1999 rate of natural population increase for B.C. was the lowest since 1950, and the second year in a row with a rate below 4.0 per 1,000 population. Except for four years from 1981 to 1984, the B.C. rate of natural population increase has been consistently below the Canadian rate each year.

TABLE 3
TRENDS OF TOTAL FERTILITY RATES
BRITISH COLUMBIA AND CANADA, 1950–1999

Year	Rate		Year	Rate	
	B.C.	Canada		B.C.	Canada
1950	3,074	3,438	1975	1,682	1,871
1951	3,201	3,487	1976	1,618	1,820
1952	3,327	3,631	1977	1,636	1,801
1953	3,542	3,712	1978	1,620	1,751
1954	3,656	3,822	1979	1,721	1,757
1955	3,748	3,823	1980	1,716	1,738
1956	3,875	3,853	1981	1,718	1,699
1957	3,921	3,923	1982	1,749	1,687
1958	3,900	3,881	1983	1,751	1,675
1959	3,958	3,941	1984	1,781	1,684
1960	3,949	3,904	1985	1,642	1,673
1961	3,785	3,852	1986	1,602	1,662
1962	3,709	3,769	1987	1,598	1,647
1963	3,564	3,683	1988	1,636	1,692
1964	3,284	3,515	1989	1,638	1,768
1965	2,710	3,157	1990	1,673	1,863
1966	2,442	2,821	1991	1,653	1,699
1967	2,307	2,601	1992	1,642	1,710
1968	2,228	2,459	1993	1,636	1,658
1969	2,223	2,409	1994	1,638	1,663
1970	2,185	2,336	1995	1,604	1,639
1971	1,994	2,188	1996	1,540	1,624
1972	1,890	2,025	1997	1,472	1,552
1973	1,751	1,939	1998	1,435	*
1974	1,735	1,887	1999	1,413	*

Note: Total Fertility Rate – Sum of age-specific fertility rates multiplied by the number of years in each age group (see glossary for definition). B.C. rates per 1,000 women age 15 to 44. Canadian rates, from Statistics Canada, are per 1,000 women age 15 to 49. *1998 and 1999 rates for Canada were not available. Non-residents are excluded.

FIGURE 5
TRENDS OF TOTAL FERTILITY RATES
BRITISH COLUMBIA AND CANADA, 1950–1999



Note: 1998 and 1999 rates for Canada were not available.

HIGHLIGHTS TO TABLE 3/FIGURE 5

- In 1999, the Total Fertility Rate (TFR) for B.C. was 1,413 births per 1,000 women of child bearing age (15 to 44 years of age), based on the provincial 1999 age-specific rates.
- Based on these TFRs, the average woman in 1999 would have 1.4 live births in her lifetime, the lowest fertility rate in recent years. This is a significant decrease from the peak in 1959, when the average woman would have had 4.0 live births in her child bearing years.

TABLE 4
TRENDS OF INFANT MORTALITY
BRITISH COLUMBIA AND CANADA, 1965-1999

Year	British Columbia Age at Death (in Days)									Canada
	0-6 Days		0-27 Days		28-364 Days		N.S.	Total		Rate
	Number	Rate	Number	Rate	Number	Rate		Number	Rate	
1965	415	12.3	453	13.5	227	6.7	3	683	20.3	24.0
1966	435	13.4	494	15.2	263	8.1	4	761	23.4	23.1
1967	429	13.0	470	14.3	218	6.6	1	689	20.9	22.0
1968	375	11.1	438	13.0	214	6.4	4	656	19.5	21.0
1969	329	9.3	374	10.6	199	5.6	-	573	16.2	19.0
1970	369	10.0	416	11.3	193	5.2	2	611	16.6	19.0
1971	409	11.7	450	12.9	185	5.3	-	635	18.2	17.5
1972	322	9.3	373	10.8	195	5.6	1	569	16.5	17.0
1973	317	9.2	363	10.6	185	5.4	3	551	16.0	16.0
1974	310	8.7	348	9.8	196	5.5	2	546	15.4	15.0
1975	278	7.7	321	8.8	169	4.7	1	491	13.5	14.3
1976	292	8.1	324	9.0	152	4.2	2	478	13.3	13.5
1977	246	6.7	276	7.5	200	5.5	-	476	13.0	12.4
1978	245	6.6	286	7.7	178	4.8	-	464	12.5	12.0
1979	196	5.1	239	6.2	167	4.3	-	406	10.6	10.9
1980	188	4.7	235	5.9	186	4.6	-	421	10.5	10.4
1981	232	5.6	259	6.2	140	3.4	3	402	9.6	9.6
1982	217	5.1	251	5.8	150	3.5	-	401	9.3	9.1
1983	193	4.5	212	4.9	145	3.4	2	359	8.3	8.5
1984	184	4.2	205	4.7	150	3.4	1	356	8.1	8.1
1985	180	4.2	198	4.6	133	3.1	-	331	7.7	8.0
1986	166	4.0	196	4.7	147	3.5	-	343	8.2	7.9
1987	162	3.9	197	4.7	156	3.7	-	353	8.5	7.3
1988	190	4.4	219	5.1	137	3.2	-	356	8.3	7.2
1989	186	4.3	215	4.9	138	3.2	-	353	8.1	7.3
1990	187	4.1	225	5.0	106	2.3	-	331	7.3	6.8
1991	137	3.0	161	3.6	126	2.8	-	287	6.3	6.4
1992	152	3.3	174	3.8	101	2.2	-	275	6.0	6.1
1993	122	2.7	139	3.0	111	2.4	-	250	5.4	6.3
1994	176	3.8	198	4.2	90	1.9	-	288	6.1	6.3
1995	157	3.4	181	3.9	95	2.0	-	276	5.9	6.3
1996	132	2.9	160	3.5	68	1.5	-	228	5.0	5.6
1997	125	2.8	145	3.3	57	1.3	-	202	4.6	5.5
1998	94	2.2	114	2.7	60	1.4	-	174	4.1	*
1999	83	2.0	105	2.5	51	1.2	-	156	3.7	*

Note: Rates per 1,000 live births in the specified year.

N.S. - Not Stated.

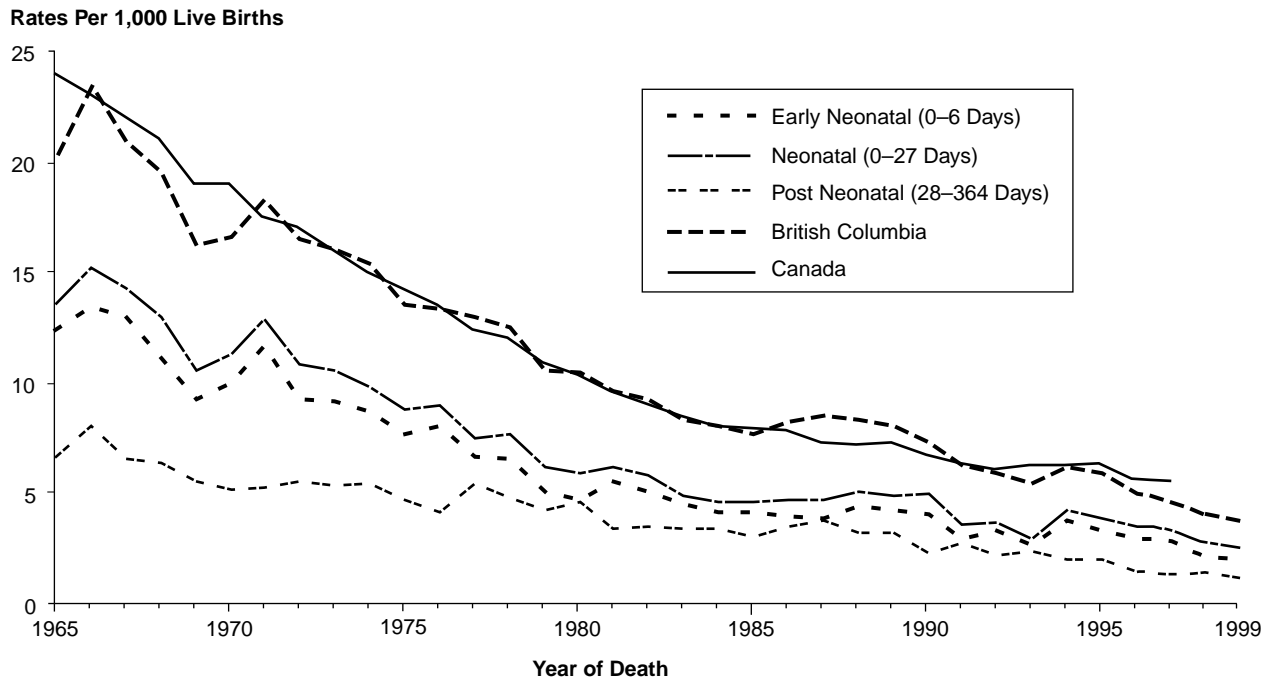
Above information includes late registrations and amendments.

Canadian rates from Statistics Canada.

*1998 and 1999 rates for Canada were not available.

Non-residents are excluded.

FIGURE 6
TRENDS OF INFANT MORTALITY
BRITISH COLUMBIA AND CANADA, 1965–1999



Note: 1998 and 1999 rates for Canada were not available.
Non-residents are excluded.

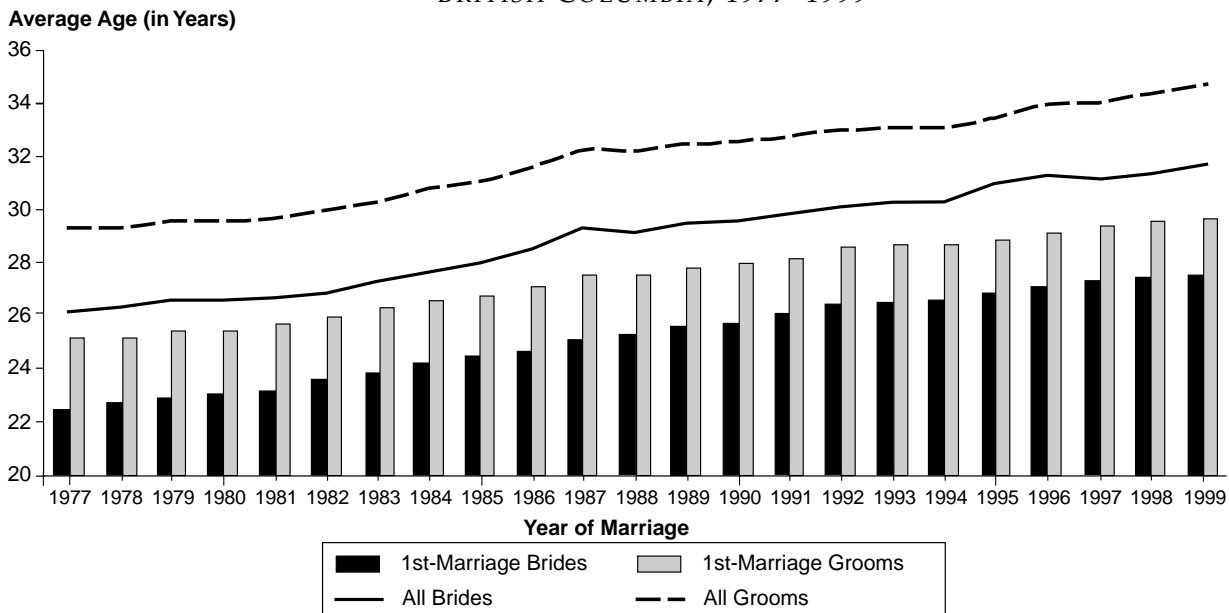
HIGHLIGHTS TO TABLE 4/FIGURE 6

- In 1999, there were 156 infant deaths (age at death less than one year) in the province, for an infant mortality rate of 3.7 per 1,000 live births, a record low rate for British Columbia. This is a decrease from 174 infant deaths and an infant mortality rate of 4.1 per 1,000 live births in 1998. In the last five years, there has been a remarkable decrease in both the number of infant deaths and the infant mortality rate. Since 1991, the B.C. infant mortality rate has been consistently below the Canadian rate.
- Out of the 156 infant deaths by age at death:
 - one half (53.2%) were in the early neonatal period, age at death less than 7 days (83 deaths)
 - one seventh (14.1%) died between 7 and 27 days after birth (22 deaths)
 - one third (32.7%) were in the post-neonatal period, age at death 28–364 days (51 deaths).
- Infant mortality rates in B.C. have fallen dramatically to almost one sixth of the rates in 1965. Decreases in early neonatal mortality (age at death less than seven days) and neonatal mortality (age at death less than 28 days) have been major contributors to the overall decline in infant mortality rates over this time period. In Canada infant mortality rates have fallen to approximately one quarter of the rates seen thirty years ago.
- Perinatal mortality refers to fetal deaths (stillbirths) and early neonatal deaths (age at death less than seven days). Since the causes of stillbirths and early neonatal deaths are frequently so similar, the perinatal mortality rate is frequently used as a health status measure. Reviewing perinatal mortality shows that the decline in infant deaths has not been offset by an increase in stillbirths. Combining data from Tables 1 and 4, perinatal deaths have declined in the last five years, from 507 in 1995 to 377 in 1999, and the perinatal mortality rate declined from 10.8 perinatal deaths per 1,000 total births in 1995 to 9.0 in 1999.
- In the last five years, post neonatal deaths decreased 46.3% from 95 in 1995 to 51 in 1999, and the post neonatal mortality rate declined from 2.0 to 1.2 deaths per 1,000 live births. The 1999 post neonatal statistics were the lowest ever recorded in British Columbia.

TABLE 5
TRENDS IN AGE OF BRIDE AND GROOM
BRITISH COLUMBIA, 1977-1999

Year of Marriage	Average Age (in Years)			
	First Marriage		All Marriages	
	Bride	Groom	Bride	Groom
1977	22.5	25.2	26.2	29.3
1978	22.7	25.2	26.3	29.3
1979	22.9	25.5	26.6	29.6
1980	23.1	25.5	26.6	29.6
1981	23.2	25.7	26.7	29.7
1982	23.6	26.0	26.9	30.0
1983	23.9	26.3	27.3	30.3
1984	24.2	26.6	27.7	30.8
1985	24.5	26.8	28.0	31.1
1986	24.7	27.1	28.5	31.6
1987	25.1	27.6	29.3	32.3
1988	25.3	27.6	29.2	32.2
1989	25.6	27.8	29.5	32.5
1990	25.7	28.0	29.6	32.6
1991	26.1	28.2	29.9	32.8
1992	26.4	28.6	30.1	33.0
1993	26.5	29.0	30.4	33.4
1994	26.6	28.9	30.4	33.5
1995	26.8	29.1	31.1	33.6
1996	27.2	29.2	31.4	34.1
1997	27.3	29.4	31.3	34.1
1998	27.5	29.6	31.6	34.4
1999	27.7	29.8	31.8	34.7

FIGURE 7
TRENDS IN AGE OF BRIDE AND GROOM
BRITISH COLUMBIA, 1977-1999



HIGHLIGHTS TO TABLE 5/FIGURE 7

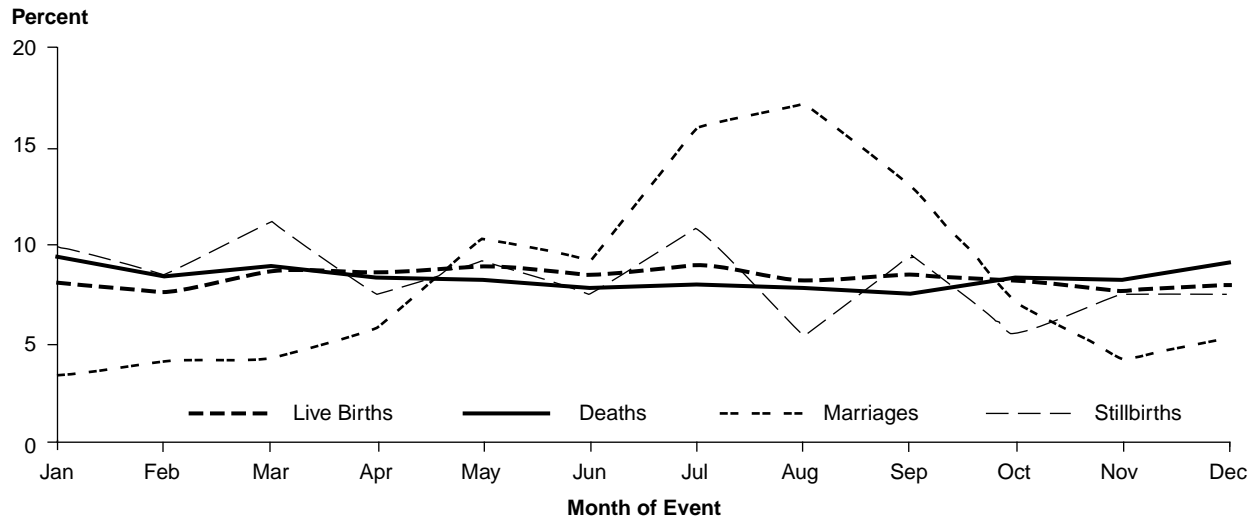
- In 1999, the average age of first-marriage brides was 27.7 years old, while first-marriage grooms were, on average, 29.8 years old.
- In recent decades, there has been a steady increase in the average age of first marriages as couples have chosen to establish their careers or live together first. On average, first-marriage brides in 1999 were 5.2 years older than first-marriage brides in 1977, while first-marriage grooms were 4.6 years older than first-marriage grooms in 1977.
- The average ages of brides and grooms, for first and later marriages combined, have also climbed steadily since 1977. In 1999, the average age of all brides was 31.8 years old, while grooms were 34.7 years old.

TABLE 6
LIVE BIRTHS, DEATHS, MARRIAGES AND STILLBIRTHS BY MONTH
BRITISH COLUMBIA, 1999

Month	Live Births		Deaths		Marriages		Stillbirths	
	Number	Percent	Number	Percent	Number	Percent	Number	Percent
January	3,398	8.1	2,612	9.4	731	3.4	29	9.9
February	3,179	7.6	2,327	8.4	894	4.1	25	8.5
March	3,618	8.7	2,477	8.9	928	4.3	33	11.2
April	3,598	8.6	2,313	8.3	1,263	5.8	22	7.5
May	3,731	8.9	2,292	8.2	2,257	10.4	27	9.2
June	3,548	8.5	2,169	7.8	1,978	9.2	22	7.5
July	3,746	9.0	2,217	8.0	3,461	16.0	32	10.9
August	3,419	8.2	2,158	7.8	3,728	17.2	16	5.4
September	3,557	8.5	2,097	7.5	2,801	13.0	28	9.5
October	3,413	8.2	2,314	8.3	1,535	7.1	16	5.4
November	3,200	7.7	2,278	8.2	900	4.2	22	7.5
December	3,332	8.0	2,540	9.1	1,140	5.3	22	7.5
Total residents	41,739	100.0	27,794	100.0	21,616	100.0	294	100.0
Non-residents	213		324				2	
TOTAL	41,952		28,118		21,616		296	

Note: Total percentage may not add up to 100 due to rounding.

FIGURE 8
LIVE BIRTHS, DEATHS, MARRIAGES AND STILLBIRTHS BY MONTH
BRITISH COLUMBIA, 1999



HIGHLIGHTS TO TABLE 6/FIGURE 8

- Of vital events in the province, only marriages show a seasonal distribution. In 1999, the most popular month to marry was August, with almost one fifth (17.2%) of the year's total marriages. The summer months, from May to September, were chosen by almost two thirds (65.8%) of 1999's brides and grooms. January was the least popular month for marriages in 1999.
- On the last day of 1999, 174 couples celebrated the millennium by getting married. Typically, throughout the year, Fridays and Saturdays were the most popular days for marriages, and this New Year's Eve, a Friday, was no exception. In the last 10 years, the highest number of New Year's Eve marriage ceremonies was in 1994 (198 marriages) when the date fell on a Saturday.
- Live births were generally evenly distributed over the twelve months in 1999. July had the largest number of live births, while February had the lowest number.
- The highest number of deaths in 1999 occurred in January and the lowest number occurred in September.
- In 1999, the largest number of stillbirths was in March.