

Vital Statistics  
Quarterly Digest



Volume 10, Number 4,  
July 2001



# Preface

This “Quarterly’s” year 2000 standard tables of vital event data are for the fourth quarter and year-end.

The death data provided in this and previous year 2000 issues are the first in Canada to have been derived from the newly introduced tenth revision of the *International Classification of Diseases* (ICD-10). ICD code groupings used in this publication for standard cause of death tables have been “translated” from ICD-9 to ICD-10 and the glossary provides complete new code listings and a note of new inclusions/exclusions that could affect comparative counts. The greatest impact on statistical consistency is not due to the additional detail (more than 2000 new codes) afforded by ICD-10. Of greater significance is some major changes in the rules used to select the single underlying cause of death (UCOD) – most notably as relates to cancers and pneumonias. This Agency, concerned about the statistical impact, medical validity, and the new rules’ interpretation of certifier intent, has initiated an extensive daily editing of automated systems output that has resulted in production of two data sets – the primary (edited) for more accurate and consistent use in BC. In addition, the Agency has constructed a more precise automated ICD-9 to ICD-10 translation that will enable our provision of historically accurate data. Included in this process has been the recovery of many thousands of death records back to 1986 that contain codes that cannot “translate” and/or would provide additional desired ICD-10 detail. These identified records are being recoded (currently at 95% completion). This entire process will provide current accuracy with historical consistency as well as recovered detail in previous years with the view to making mortality data in BC the best available anywhere.

As previously noted, there are several areas of statistical discontinuities in cause-of-death statistics resulting from the implementation of ICD-10 based classification and selection rule changes. This issue’s feature article is an in depth discussion of the impact of these changes on cancer statistics. It provides information regarding “new” cancer codes and examples of new coding application and selection rules. The accuracy of code rules in reflecting the intent of death record certifiers was examined by a survey of more than 100 physicians. This issue paper provides the result of this survey and explains the steps taken by this Agency (including an editing process) to address these data quality concerns. Also provided is a comparison of edited and unedited data.

Due to the fact that Vital Statistics Agency files are continually being updated, totals compiled by addition of the annual quarters will not correspond exactly to year-to-date and year-end figures. For the same reason, depending on the date the data are extracted, there may be differences in numbers presented in the year-end *Quarterly Digest* and those reported in the 2000 Annual Report. Therefore, the numbers provided in this publication should be considered provisional. Finally, the usual cautions regarding random fluctuations in values, particularly those involving small numbers, must be noted.

As always, requests for changes and suggestions for articles continue to be welcome. Your support and input into this publication is greatly appreciated.

R.J. Danderfer  
CEO/Director  
British Columbia Vital Statistics Agency

Soo-Hong Uh  
Manager  
Information and Resource Management Branch

# Table of Contents

Preface .....	i
Map: B.C. Local Health Areas .....	4
Local Health Areas (LHA) within Health Regions: Summary .....	5

## Tables: October 1 - December 31, 2000 and Year-End Totals

### Vital Event Statistics

(Population, Livebirth, Death, Marriage, Stillbirth, Infant Deaths)

1A by Local Health Area .....	6
1B by Health Region .....	7

### Selected Birth Statistics

(Low Birthweight, Preterm, Teenage Mother, Elderly Gravida, Cesarean Section)

2A by Local Health Area .....	8
2B by Health Region .....	9

### External Causes of Death

(Accidents - [Motor Vehicle Accidents, Poisoning, Falls, Burns/Fire, Drowning, Other], Suicide, Homicide, Other External Causes)

3A by Local Health Area .....	10
3B by Health Region .....	11

### Neoplasm Deaths

(Lung, Female Breast, Colorectal, Other G.I., Female Reproductive, Prostate, Blood/Lymph, Other Malignancy, Nonmalignant and Unspecified)

4A by Local Health Area .....	12
4B by Health Region .....	13

### Heart Disease Deaths

(Rheumatic/Valvular, Hypertension, Ischemic, Conductive & Dysrhythmic, Heart Failure, Congenital, Other)

5A by Local Health Area .....	14
5B by Health Region .....	15

### Respiratory Disease

(Emphysema, COPD, Pneumonia, Influenza, Asthma, Lung Disease from External Agents, Pulmonary Fibrosis, Other Respiratory)

6A by Local Health Area .....	16
6B by Health Region .....	17

### Other Selected Death Statistics

(Diabetes, Alcohol-Related, AIDS, Other Infectious Disease, Cerebral & Other Vascular, Liver Disease, Amyotrophic Lateral Sclerosis & Multiple Sclerosis, Alzheimer's Disease, Parkinson's Disease)

7A by Local Health Area .....	18
7B by Health Region .....	19

**Summary Article:**

**The impact of ICD-10 (in year 2000) on identifying, classifying, coding and UCOD selecting neoplasm(s) on death records.**  
by J. Macdonald and R. Armour ..... 21

Glossary ..... 29

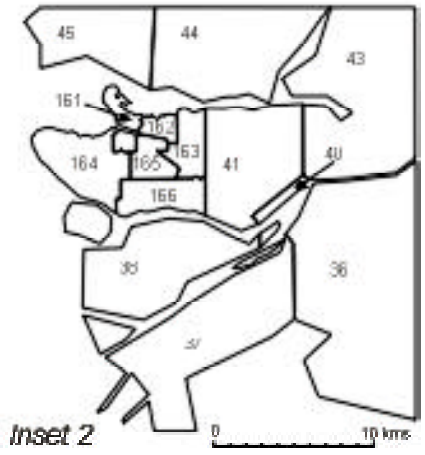
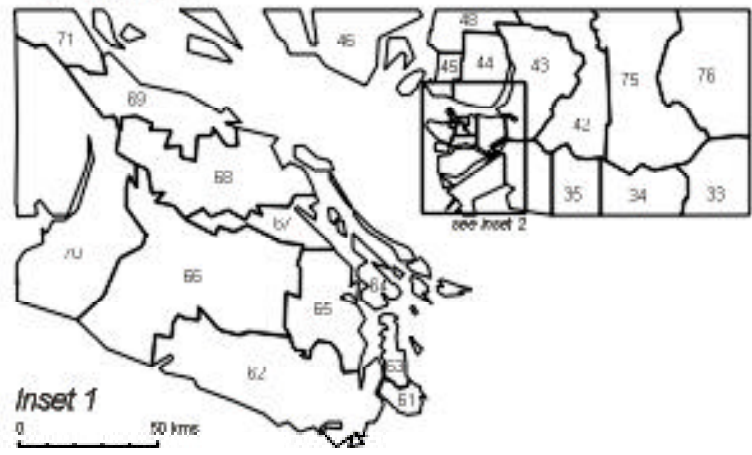
Index of Quarterly Digest Articles to date ..... 32

Editor's Note ..... 35

Contributors' Note ..... 35

Readers' Note ..... 35

# BRITISH COLUMBIA Local Health Areas



## British Columbia: Local Health Areas (LHA) within Health Regions: Summary

<p><b>01 East Kootenay</b>  <b>LHA</b>            01 Fernie            02 Cranbrook            03 Kimberley            04 Windermere            05 Creston            18 Golden</p>	<p><b>07 South Fraser Valley</b>  <b>LHA</b>            35 Langley            36 Surrey            37 Delta</p>	<p><b>14 Peace Liard</b>  <b>LHA</b>            59 Peace River South            60 Peace River North            81 Fort Nelson</p>
<p><b>02 West Kootenay-Boundary</b>  <b>LHA</b>            06/07 Kootenay Lake/Nelson            09 Castlegar            10 Arrow Lakes            11 Trail            12/13 Grand Forks/Kettle Valley</p>	<p><b>08 Simon Fraser</b>  <b>LHA</b>            40 New Westminster            42 Maple Ridge            43 Coquitlam</p>	<p><b>15 Northern Interior</b>  <b>LHA</b>            55/93 Burns Lake/Eutsuk            56 Nechako            57 Prince George</p>
<p><b>03 North Okanagan</b>  <b>LHA</b>            19 Revelstoke            20 Salmon Arm            21 Armstrong-Spallumcheen            22 Vernon            78 Enderby</p>	<p><b>09 Coast Garibaldi</b>  <b>LHA</b>            46 Sunshine Coast            47 Powell River            48 Howe Sound</p>	<p><b>16 Vancouver</b>  <b>LHA</b>            161 Vancouver City Centre            162 Vancouver Downtown East Side            163 Vancouver North East            164 Vancouver West Side            165 Vancouver Midtown            166 Vancouver South            Unknown Vancouver</p>
<p><b>04 South Okanagan-Similkameen</b>  <b>LHA</b>            14 Southern Okanagan            15 Penticton            16 Keremeos            17 Princeton            23 Central Okanagan            77 Summerland</p>	<p><b>10 Central Vancouver Island</b>  <b>LHA</b>            65 Cowichan            66 Lake Cowichan            67 Ladysmith            68 Nanaimo            69 Qualicum            70 Alberni</p>	<p><b>17 Burnaby</b>  <b>LHA</b>            41 Burnaby</p>
<p><b>05 Thompson</b>  <b>LHA</b>            24 Kamloops            26 North Thompson            29 Lillooet            30 South Cariboo            31 Merritt</p>	<p><b>11 Upper Island/Central Coast</b>  <b>LHA</b>            71 Courtenay            72/84 Campbell River/            Vancouver Island West            83 Central Coast            85 Vancouver Island North</p>	<p><b>18 North Shore</b>  <b>LHA</b>            44 North Vancouver            45 West Vancouver-Bowen Island</p>
<p><b>06 Fraser Valley</b>  <b>LHA</b>            32 Hope            33 Chilliwack            34 Abbotsford            75 Mission            76 Agassiz-Harrison</p>	<p><b>12 Cariboo</b>  <b>LHA</b>            25 100 Mile House            27 Cariboo-Chilcotin            28 Quesnel            49 Bella Coola Valley</p>	<p><b>19 Richmond</b>  <b>LHA</b>            38 Richmond</p>
<p><b>07 Fraser Valley</b>  <b>LHA</b>            32 Hope            33 Chilliwack            34 Abbotsford            75 Mission            76 Agassiz-Harrison</p>	<p><b>13 North West</b>  <b>LHA</b>            50 Queen Charlotte            51 Snow Country            52 Prince Rupert            53 Upper Skeena            54 Smithers            80 Kitimat            87/94 Stikine/Telegraph Creek            88 Terrace            92 Nisga'a</p>	<p><b>20 Capital</b>  <b>LHA</b>            61 Greater Victoria            62 Sooke            63 Saanich            64 Gulf Islands</p>

Table 1A

### Vital Event Statistics by Local Health Area

October 1 - December 31, 2000  
Year-End, 2000

Local Health Area	2000 Population	Live Births	Deaths	Marriages	Stillbirths	Infant Deaths (<1 yr)					
01 Fernie	16,644	32	<i>128</i>	14	<i>72</i>	15	<i>97</i>	-	-	-	
02 Cranbrook	26,395	46	<i>216</i>	39	<i>181</i>	18	<i>112</i>	-	<i>1</i>	-	<i>2</i>
03 Kimberley	8,948	25	<i>61</i>	21	<i>84</i>	13	<i>85</i>	-	-	-	-
04 Windermere	9,573	16	<i>75</i>	11	<i>37</i>	7	<i>108</i>	-	<i>2</i>	-	-
05 Creston	13,160	22	<i>135</i>	37	<i>147</i>	12	<i>74</i>	-	-	-	-
06/07 Kootenay Lake/Nelson	29,313	50	<i>255</i>	42	<i>195</i>	30	<i>178</i>	1	<i>4</i>	-	<i>1</i>
09 Castlegar	13,892	24	<i>92</i>	37	<i>109</i>	10	<i>52</i>	-	<i>3</i>	-	-
10 Arrow Lakes	5,397	6	<i>40</i>	12	<i>57</i>	2	<i>36</i>	-	-	-	<i>1</i>
11 Trail	20,929	33	<i>169</i>	53	<i>216</i>	12	<i>76</i>	-	-	-	<i>1</i>
12/13 Grand Forks/Kettle Valley	13,227	24	<i>82</i>	29	<i>117</i>	8	<i>68</i>	-	-	-	-
14 Southern Okanagan	18,826	26	<i>150</i>	51	<i>199</i>	20	<i>113</i>	-	<i>1</i>	-	-
15 Penticton	40,567	79	<i>324</i>	92	<i>423</i>	29	<i>238</i>	-	-	-	-
16 Keremeos	4,740	9	<i>41</i>	15	<i>47</i>	4	<i>28</i>	-	-	-	-
17 Princeton	5,188	12	<i>32</i>	17	<i>59</i>	2	<i>23</i>	-	-	-	-
18 Golden	7,832	10	<i>58</i>	3	<i>37</i>	22	<i>92</i>	-	-	-	-
19 Revelstoke	8,754	18	<i>79</i>	11	<i>57</i>	6	<i>39</i>	-	-	-	<i>1</i>
20 Salmon Arm	33,470	57	<i>213</i>	65	<i>263</i>	29	<i>227</i>	-	<i>1</i>	-	<i>1</i>
21 Armstrong-Spallumcheen	9,969	17	<i>74</i>	14	<i>64</i>	6	<i>36</i>	-	<i>1</i>	-	-
22 Vernon	59,239	91	<i>473</i>	128	<i>516</i>	50	<i>354</i>	-	<i>2</i>	-	<i>2</i>
23 Central Okanagan	152,309	315	<i>1,352</i>	294	<i>1,116</i>	108	<i>913</i>	4	<i>13</i>	-	<i>3</i>
24 Kamloops	107,146	208	<i>909</i>	197	<i>750</i>	87	<i>601</i>	1	<i>5</i>	1	<i>2</i>
25 100 Mile House	16,532	31	<i>127</i>	26	<i>106</i>	9	<i>97</i>	-	-	1	<i>2</i>
26 North Thompson	5,353	11	<i>45</i>	9	<i>26</i>	4	<i>31</i>	-	-	-	<i>1</i>
27 Cariboo-Chilcotin	29,495	62	<i>320</i>	35	<i>131</i>	18	<i>147</i>	-	<i>1</i>	-	-
28 Quesnel	27,636	61	<i>232</i>	46	<i>154</i>	16	<i>123</i>	-	-	-	<i>1</i>
29 Lillooet	4,986	12	<i>52</i>	9	<i>40</i>	3	<i>40</i>	-	<i>1</i>	-	-
30 South Cariboo	7,902	14	<i>55</i>	10	<i>56</i>	2	<i>27</i>	-	-	-	-
31 Merritt	12,252	19	<i>109</i>	18	<i>97</i>	12	<i>79</i>	-	<i>2</i>	-	-
32 Hope	8,386	22	<i>90</i>	20	<i>82</i>	6	<i>49</i>	-	-	-	<i>1</i>
33 Chilliwack	72,545	170	<i>758</i>	133	<i>539</i>	65	<i>395</i>	1	<i>4</i>	1	<i>2</i>
34 Abbotsford	116,176	374	<i>1,547</i>	206	<i>835</i>	81	<i>528</i>	4	<i>15</i>	1	<i>1</i>
35 Langley	115,301	285	<i>1,212</i>	192	<i>718</i>	93	<i>620</i>	3	<i>5</i>	-	<i>4</i>
36 Surrey	358,648	1,171	<i>4,710</i>	537	<i>2,049</i>	261	<i>1,565</i>	8	<i>22</i>	8	<i>27</i>
37 Delta	101,970	238	<i>971</i>	161	<i>558</i>	61	<i>328</i>	2	<i>9</i>	-	<i>1</i>
38 Richmond	166,118	380	<i>1,580</i>	227	<i>807</i>	183	<i>982</i>	1	<i>9</i>	1	<i>9</i>
40 New Westminster	55,279	139	<i>656</i>	143	<i>524</i>	74	<i>350</i>	3	<i>6</i>	-	<i>1</i>
41 Burnaby	192,370	507	<i>2,038</i>	316	<i>1,316</i>	162	<i>924</i>	4	<i>15</i>	-	<i>7</i>
42 Maple Ridge	78,365	192	<i>859</i>	105	<i>459</i>	72	<i>415</i>	1	<i>7</i>	1	<i>2</i>
43 Coquitlam	191,580	466	<i>2,155</i>	250	<i>837</i>	119	<i>641</i>	2	<i>5</i>	-	<i>4</i>
44 North Vancouver	130,952	301	<i>1,331</i>	215	<i>805</i>	91	<i>513</i>	2	<i>9</i>	2	<i>4</i>
45 West Vancouver-Bowen Island	49,480	76	<i>307</i>	115	<i>447</i>	56	<i>380</i>	1	<i>3</i>	-	<i>1</i>
46 Sunshine Coast	27,838	36	<i>223</i>	65	<i>236</i>	17	<i>163</i>	1	<i>1</i>	-	-
47 Powell River	20,648	57	<i>171</i>	40	<i>151</i>	16	<i>119</i>	-	<i>3</i>	-	-
48 Howe Sound	31,962	97	<i>401</i>	28	<i>106</i>	55	<i>388</i>	1	<i>3</i>	-	-
49 Bella Coola Valley	3,525	8	<i>44</i>	2	<i>18</i>	3	<i>21</i>	-	<i>1</i>	-	<i>1</i>
50 Queen Charlotte	5,806	11	<i>73</i>	7	<i>27</i>	3	<i>19</i>	1	<i>3</i>	-	<i>1</i>
51 Snow Country	747	2	<i>10</i>	3	<i>9</i>	-	<i>2</i>	-	-	-	-
52 Prince Rupert	18,838	35	<i>212</i>	29	<i>96</i>	12	<i>81</i>	-	-	-	-
53 Upper Skeena	6,127	22	<i>70</i>	12	<i>34</i>	4	<i>23</i>	-	-	-	-
54 Smithers	18,937	69	<i>268</i>	20	<i>80</i>	8	<i>105</i>	1	<i>4</i>	2	<i>3</i>
55/93 Burns Lake/Eutsuk	7,992	24	<i>100</i>	8	<i>35</i>	9	<i>44</i>	-	-	-	<i>1</i>
56 Nechako	18,651	51	<i>219</i>	28	<i>109</i>	14	<i>91</i>	1	<i>4</i>	-	<i>1</i>
57 Prince George	107,438	255	<i>1,100</i>	115	<i>442</i>	84	<i>486</i>	2	<i>7</i>	-	<i>2</i>
59 Peace River South	28,355	48	<i>293</i>	39	<i>166</i>	13	<i>140</i>	-	<i>3</i>	1	<i>3</i>
60 Peace River North	31,192	112	<i>521</i>	18	<i>99</i>	23	<i>183</i>	2	<i>5</i>	1	<i>1</i>
61 Greater Victoria	204,950	343	<i>1,671</i>	525	<i>2,172</i>	207	<i>1,331</i>	1	<i>9</i>	2	<i>4</i>
62 Sooke	54,834	122	<i>565</i>	67	<i>269</i>	46	<i>353</i>	1	<i>2</i>	1	<i>2</i>
63 Saanich	60,329	79	<i>366</i>	132	<i>544</i>	48	<i>326</i>	-	<i>3</i>	-	<i>1</i>
64 Gulf Islands	14,734	28	<i>94</i>	38	<i>148</i>	18	<i>160</i>	-	-	-	<i>2</i>
65 Cowichan	54,001	125	<i>520</i>	87	<i>379</i>	32	<i>238</i>	2	<i>4</i>	-	<i>2</i>
66 Lake Cowichan	6,587	18	<i>61</i>	12	<i>43</i>	-	<i>21</i>	-	-	-	<i>1</i>
67 Ladysmith	16,301	36	<i>132</i>	47	<i>166</i>	7	<i>78</i>	-	-	-	-
68 Nanaimo	94,633	184	<i>732</i>	213	<i>760</i>	55	<i>415</i>	1	<i>2</i>	-	<i>3</i>
69 Qualicum	40,625	49	<i>223</i>	99	<i>388</i>	30	<i>246</i>	1	<i>4</i>	-	<i>1</i>
70 Alberni	33,132	68	<i>300</i>	66	<i>252</i>	41	<i>291</i>	1	<i>4</i>	1	<i>3</i>
71 Courtenay	60,575	119	<i>468</i>	105	<i>410</i>	31	<i>312</i>	2	<i>3</i>	-	<i>1</i>
72/84 Campbell River/Vancouver Isl. W.	44,663	83	<i>399</i>	56	<i>250</i>	31	<i>227</i>	-	<i>1</i>	-	-
75 Mission	37,841	90	<i>387</i>	61	<i>240</i>	30	<i>218</i>	1	<i>5</i>	-	<i>1</i>
76 Agassiz-Harrison	8,227	18	<i>84</i>	14	<i>61</i>	19	<i>106</i>	-	<i>1</i>	-	-
77 Summerland	11,503	17	<i>75</i>	31	<i>125</i>	8	<i>75</i>	-	-	-	-
78 Enderby	7,818	14	<i>62</i>	10	<i>50</i>	4	<i>37</i>	-	-	-	<i>2</i>
80 Kitimat	13,040	31	<i>124</i>	8	<i>44</i>	7	<i>44</i>	1	<i>1</i>	-	-
81 Fort Nelson	6,707	14	<i>79</i>	3	<i>17</i>	4	<i>31</i>	-	<i>1</i>	-	<i>1</i>
83 Central Coast	2,050	6	<i>22</i>	2	<i>15</i>	3	<i>21</i>	-	-	1	<i>1</i>
85 Vancouver Island North	15,521	47	<i>177</i>	24	<i>72</i>	9	<i>59</i>	-	<i>3</i>	2	<i>2</i>
87/94 Stikine/Telegraph Creek	2,000	8	<i>24</i>	1	<i>6</i>	2	<i>18</i>	-	-	-	-
88 Terrace	24,093	71	<i>288</i>	20	<i>99</i>	17	<i>104</i>	-	<i>4</i>	-	<i>2</i>
92 Nisgaia	2,371	5	<i>39</i>	1	<i>8</i>	-	<i>12</i>	-	-	-	<i>1</i>
161 Vancouver City Centre	98,117	169	<i>746</i>	164	<i>625</i>	156	<i>940</i>	-	<i>8</i>	1	<i>3</i>
162 Vancouver Downtown East Side	53,328	122	<i>485</i>	131	<i>508</i>	63	<i>307</i>	3	<i>9</i>	-	<i>6</i>
163 Vancouver North East	95,844	261	<i>1,138</i>	138	<i>585</i>	106	<i>518</i>	5	<i>12</i>	1	<i>5</i>
164 Vancouver West Side	123,389	230	<i>1,016</i>	194	<i>766</i>	179	<i>1,139</i>	3	<i>7</i>	3	<i>4</i>
165 Vancouver Midtown	86,275	278	<i>1,119</i>	114	<i>521</i>	66	<i>382</i>	1	<i>8</i>	-	<i>2</i>
166 Vancouver South	118,791	302	<i>1,267</i>	212	<i>818</i>	77	<i>424</i>	3	<i>10</i>	-	<i>4</i>
Unknown Vancouver	-	1	<i>1</i>	-	<i>1</i>	4	<i>34</i>	-	-	-	-
Unknown	-	-	<i>1</i>	-	<i>7</i>	2	<i>3</i>	-	-	-	-
<b>British Columbia</b>	<b>4,067,179</b>	<b>9,416</b>	<b>40,482</b>	<b>6,944</b>	<b>27,289</b>	<b>3,441</b>	<b>22,119</b>	<b>73</b>	<b>281</b>	<b>32</b>	<b>149</b>

Note: Refer to Glossary for definition of terms. Columns bolded and italicized represent year-end totals. 2000 population projections provided by BC STATS, Ministry of Management Services.

Table 1B

### Vital Event Statistics by Health Region

October 1 - December 31, 2000  
Year-End, 2000

Health Region	2000 Population	Live Births	Deaths	Marriages	Stillbirths	Infant Deaths (<1 yr)
1 East Kootenay	82,552	151 <b>673</b>	125 <b>558</b>	87 <b>568</b>	- <b>3</b>	- <b>2</b>
2 West Kootenay-Boundary	82,758	137 <b>638</b>	173 <b>694</b>	62 <b>410</b>	1 <b>7</b>	- <b>3</b>
3 North Okanagan	119,250	197 <b>901</b>	228 <b>950</b>	95 <b>693</b>	- <b>4</b>	- <b>6</b>
4 South Okanagan-Similkameen	233,133	458 <b>1,974</b>	500 <b>1,969</b>	171 <b>1,390</b>	4 <b>14</b>	- <b>3</b>
5 Thompson	137,639	264 <b>1,170</b>	243 <b>969</b>	108 <b>778</b>	1 <b>8</b>	1 <b>3</b>
6 Fraser Valley	243,175	674 <b>2,866</b>	434 <b>1,757</b>	201 <b>1,296</b>	6 <b>25</b>	2 <b>5</b>
7 South Fraser Valley	575,919	1,694 <b>6,893</b>	890 <b>3,325</b>	415 <b>2,513</b>	13 <b>36</b>	8 <b>32</b>
8 Simon Fraser	325,224	797 <b>3,670</b>	498 <b>1,820</b>	265 <b>1,406</b>	6 <b>18</b>	1 <b>7</b>
9 Coast Garibaldi	80,448	190 <b>795</b>	133 <b>493</b>	88 <b>670</b>	2 <b>7</b>	- <b>-</b>
10 Central Vancouver Island	245,279	480 <b>1,968</b>	524 <b>1,988</b>	165 <b>1,289</b>	5 <b>14</b>	1 <b>10</b>
11 Upper Island/Central Coast	122,809	255 <b>1,066</b>	187 <b>747</b>	74 <b>619</b>	2 <b>7</b>	3 <b>4</b>
12 Cariboo	77,188	162 <b>723</b>	109 <b>409</b>	46 <b>388</b>	- <b>2</b>	1 <b>4</b>
13 North West	91,959	254 <b>1,108</b>	101 <b>403</b>	53 <b>408</b>	3 <b>12</b>	2 <b>7</b>
14 Peace Liard	66,254	174 <b>893</b>	60 <b>282</b>	40 <b>354</b>	2 <b>9</b>	2 <b>5</b>
15 Northern Interior	134,081	330 <b>1,419</b>	151 <b>586</b>	107 <b>621</b>	3 <b>11</b>	- <b>4</b>
16 Vancouver	575,744	1,363 <b>5,772</b>	953 <b>3,824</b>	651 <b>3,744</b>	15 <b>54</b>	5 <b>24</b>
17 Burnaby	192,370	507 <b>2,038</b>	316 <b>1,316</b>	162 <b>924</b>	4 <b>15</b>	- <b>7</b>
18 North Shore	180,432	377 <b>1,638</b>	330 <b>1,252</b>	147 <b>893</b>	3 <b>12</b>	2 <b>5</b>
19 Richmond	166,118	380 <b>1,580</b>	227 <b>807</b>	183 <b>982</b>	1 <b>9</b>	1 <b>9</b>
20 Capital	334,847	572 <b>2,696</b>	762 <b>3,133</b>	319 <b>2,170</b>	2 <b>14</b>	3 <b>9</b>
Unknown	-	- <b>1</b>	- <b>7</b>	2 <b>3</b>	- <b>-</b>	- <b>-</b>
<b>British Columbia</b>	4,067,179	9,416 <b>40,482</b>	6,944 <b>27,289</b>	3,441 <b>22,119</b>	73 <b>281</b>	32 <b>149</b>

Note: Refer to Glossary for definition of terms.

Columns that are bolded and italicized represent year-end totals.

2000 population projections are provided by BC STATS, Ministry of Finance.

Table 2A

Selected Birth Statistics  
by Local Health Area

October 1 - December 31, 2000

Year-End, 2000

Local Health Area	Low Birth Weight		Pre-Term		Teenage Mother		Elderly Gravida		Cesarean Section											
	Number	Percent	Number	Percent	Number	Percent	Number	Percent	Number	Percent										
01 Fernie	3	2.3	3	2.3	3	8.3	4	22	6	20										
02 Cranbrook	9	4.3	11	4.3	25	6.5	18	17.4	15	43										
03 Kimberley	2	3.3	-	-	5	12.0	5	12.0	4	10										
04 Windermere	2	2.7	1	1.3	3	12.5	10	13.3	13	17.3										
05 Creston	4	3.0	7	5.2	21	18.2	23	9.1	24	18.2										
06/07 Kootenay Lake/Nelson	10	2.0	13	5.1	9	2.0	63	22.0	40	10.0										
09 Castlegar	2	2.2	3	8.3	1	1.1	11	8.3	18	20.8										
10 Arrow Lakes	5	16.7	6	16.7	1	2.5	5	12.5	9	22.5										
11 Trail	15	8.9	22	13.0	5	3.0	23	21.2	46	36.4										
12/13 Grand Forks/Kettle Valley	4	4.2	5	8.3	10	8.3	11	20.8	7	12.5										
14 Southern Okanagan	9	15.4	12	15.4	12	7.7	18	11.5	25	30.8										
15 Penticton	25	3.8	36	6.3	26	1.3	45	15.2	54	7.6										
16 Keremeos	1	2.4	-	-	1	2.4	4	11.1	4	9.8										
17 Princeton	4	12.5	3	9.4	1	8.3	5	16.7	4	16.7										
18 Golden	1	1.7	5	10.0	7	30.0	1	1.7	18	50.0										
19 Revelstoke	6	11.1	7	11.1	6	7.6	9	22.2	17	27.8										
20 Salmon Arm	10	3.5	10	1.8	13	7.0	31	12.3	56	24.6										
21 Armstrong-Spallumcheen	1	1.4	3	4.1	4	5.9	14	35.3	15	23.5										
22 Vernon	23	9.9	27	12.1	27	6.6	70	15.4	99	24.2										
23 Central Okanagan	62	4.1	91	5.7	65	2.9	208	16.8	350	25.1										
24 Kamloops	44	4.8	72	10.1	63	6.7	122	11.5	240	30.8										
25 100 Mile House	12	9.7	12	9.7	12	6.5	13	6.5	26	29.0										
26 North Thompson	-	-	1	9.1	4	8.9	2	18.2	8	27.3										
27 Cariboo-Chilcotin	16	6.5	26	9.7	40	8.1	31	12.9	99	38.7										
28 Quesnel	10	4.9	13	6.6	21	8.2	25	11.5	52	23.0										
29 Lillooet	2	16.7	2	16.7	5	8.3	5	8.3	19	66.7										
30 South Cariboo	4	7.1	2	3.6	7	21.4	9	7.1	9	14.3										
31 Merritt	3	2.8	9	10.5	12	5.3	10	9.2	36	36.8										
32 Hope	3	3.3	4	4.4	13	13.6	9	4.5	20	27.3										
33 Chilliwack	28	3.5	53	6.5	59	10.6	106	20.0	148	23.5										
34 Abbotsford	84	7.2	99	7.2	78	4.0	166	12.0	341	25.1										
35 Langley	50	4.9	86	10.2	48	3.5	198	17.2	266	20.4										
36 Surrey	276	5.1	324	6.6	166	3.2	709	14.3	1,124	23.5										
37 Delta	45	5.0	68	8.4	25	3.4	53	20.2	70	29.4										
38 Richmond	81	6.3	95	5.8	21	1.1	433	26.3	404	24.5										
40 New Westminster	50	7.9	64	13.7	30	3.6	141	27.3	150	25.2										
41 Burnaby	123	5.9	169	8.1	50	2.6	493	26.2	448	26.4										
42 Maple Ridge	35	2.6	54	6.3	29	4.2	165	18.2	213	25.0										
43 Coquitlam	102	3.9	153	5.8	55	4.1	513	24.2	503	24.0										
44 North Vancouver	63	5.6	92	8.0	20	3.3	431	29.2	330	26.2										
45 West Vancouver-Bowen Island	12	3.9	24	3.9	2	0.7	113	34.2	71	23.1										
46 Sunshine Coast	6	2.8	12	5.6	11	4.9	10	27.8	7	43.9										
47 Powell River	9	12.3	11	12.3	12	5.3	27	7.0	47	29.8										
48 Howe Sound	26	8.2	34	10.3	16	2.1	89	17.5	88	24.7										
49 Bella Coola Valley	4	9.1	6	12.5	5	12.5	7	12.5	11	12.5										
50 Queen Charlotte	4	5.5	5	6.8	4	5.5	7	18.2	14	18.2										
51 Snow Country	-	-	-	-	-	-	-	-	2	400.0										
52 Prince Rupert	7	2.9	19	11.4	25	14.3	29	14.3	46	17.1										
53 Upper Skeena	3	9.1	4	9.1	11	27.3	6	8.6	4	18.2										
54 Smithers	8	2.9	9	2.9	23	7.2	30	4.3	63	27.5										
55/93 Burns Lake/Eutsuk	1	4.2	2	2.0	10	12.5	10	4.2	22	20.8										
56 Nechako	9	7.8	11	5.9	17	7.8	22	5.9	48	23.5										
57 Prince George	51	3.5	68	4.7	87	6.3	118	12.9	243	18.4										
59 Peace River South	12	6.3	12	6.3	25	12.5	33	10.4	55	25.0										
60 Peace River North	28	2.7	32	3.6	54	10.7	62	14.3	113	28.6										
61 Greater Victoria	73	4.1	110	7.0	71	5.2	383	22.7	388	22.2										
62 Sooke	24	4.1	37	4.9	24	2.5	115	22.1	136	25.4										
63 Saanich	22	12.7	29	15.2	7	3.8	16	8.6	72	19.0										
64 Gulf Islands	4	4.3	9	7.1	3	7.1	25	28.6	19	14.3										
65 Cowichan	27	6.4	39	7.2	44	9.6	84	8.8	121	20.8										
66 Lake Cowichan	3	4.9	3	4.9	7	11.1	11.5	2	11.5	17	27.8									
67 Ladysmith	7	5.6	10	11.1	12	13.9	17	12.9	31	19.4										
68 Nanaimo	34	5.4	58	8.2	44	6.0	116	13.6	177	31.0										
69 Qualicum	8	8.2	15	10.2	7	4.1	40	16.3	64	34.7										
70 Alberni	14	2.9	20	4.4	35	10.3	31	14.7	47	10.3										
71 Courtenay	5	4.2	8	6.7	25	4.2	103	25.2	30	94										
72/84 Campbell River/Vancouver Isl. W.	22	4.8	31	4.8	48	16.9	49	7.2	104	28.9										
75 Mission	20	5.6	26	6.7	24	4.4	66	16.7	92	32.2										
76 Agassiz-Harrison	1	5.6	4	5.6	8	11.1	9.5	4	19	33.3										
77 Summerland	7	9.3	9	12.0	3	4.0	19	41.2	21	11.8										
78 Enderby	6	9.7	7	7.1	1	7.1	10	14.3	22	35.7										
80 Kitimat	5	4.0	7	5.6	6	6.5	14	6.5	46	32.3										
81 Fort Nelson	2	2.5	3	3.8	7	8.9	2	14.3	2	21.4										
83 Central Coast	1	16.7	5	16.7	2	9.1	2	16.7	5	33.3										
85 Vancouver Island North	6	6.4	14	10.6	20	10.6	22	10.6	36	23.4										
87/94 Stikine/Telegraph Creek	3	12.5	4	12.5	5	37.5	3	12.5	1	12.5										
88 Terrace	10	2.8	25	7.0	24	11.3	28	12.7	64	25.4										
92 Nisgaia	3	7.7	7	17.9	6	40.0	4	20.0	12	20.0										
161 Vancouver City Centre	43	10.1	46	10.7	3	0.6	219	33.7	209	27.2										
162 Vancouver Downtown East Side	2	1.6	12	9.8	17	2.5	121	23.0	104	14.8										
163 Vancouver North East	65	5.7	81	6.9	21	1.1	278	23.0	236	18.8										
164 Vancouver West Side	45	6.1	74	9.6	4	0.4	344	39.1	250	24.3										
165 Vancouver Midtown	65	6.8	78	7.9	26	0.7	307	29.1	270	27.0										
166 Vancouver South	87	5.3	116	8.6	23	1.0	311	25.5	298	26.5										
Unknown Vancouver	-	-	-	-	-	-	-	-	-	-										
Unknown	-	-	-	-	-	-	-	-	-	-										
<b>British Columbia</b>	<b>490</b>	<b>2,066</b>	<b>5.2</b>	<b>5.1</b>	<b>683</b>	<b>2,860</b>	<b>7.3</b>	<b>7.1</b>	<b>413</b>	<b>1,840</b>	<b>4.4</b>	<b>4.5</b>	<b>1,834</b>	<b>7,806</b>	<b>19.5</b>	<b>19.3</b>	<b>2,293</b>	<b>9,401</b>	<b>24.4</b>	<b>23.2</b>

Note: Refer to Glossary for definition of terms. Columns bolded and italicized represent year-end totals.

Table 2B

**Selected Birth Statistics  
by Health Region**

**October 1 - December 31, 2000  
Year-End, 2000**

Local Health Area	Low Birth Weight				Pre-Term				Teenage Mother				Elderly Gravida				Cesarean Section			
	Number	Percent	Number	Percent	Number	Percent	Number	Percent	Number	Percent	Number	Percent	Number	Percent	Number	Percent				
1 East Kootenay	2	<b>21</b>	1.3	<b>3.1</b>	3	<b>27</b>	2.0	<b>4.0</b>	18	<b>69</b>	11.9	<b>10.3</b>	17	<b>79</b>	11.3	<b>11.7</b>	34	<b>128</b>	22.5	<b>19.0</b>
2 West Kootenay-Boundary	7	<b>36</b>	5.1	<b>5.6</b>	8	<b>49</b>	5.8	<b>7.7</b>	3	<b>26</b>	2.2	<b>4.1</b>	25	<b>113</b>	18.2	<b>17.7</b>	25	<b>120</b>	18.2	<b>18.8</b>
3 North Okanagan	13	<b>46</b>	6.6	<b>5.1</b>	15	<b>54</b>	7.6	<b>6.0</b>	12	<b>54</b>	6.1	<b>6.0</b>	33	<b>134</b>	16.8	<b>14.9</b>	50	<b>209</b>	25.4	<b>23.2</b>
4 South Okanagan-Similkameen	20	<b>108</b>	4.4	<b>5.5</b>	27	<b>151</b>	5.9	<b>7.6</b>	13	<b>108</b>	2.8	<b>5.5</b>	78	<b>299</b>	17.0	<b>15.1</b>	97	<b>458</b>	21.2	<b>23.2</b>
5 Thompson	13	<b>53</b>	4.9	<b>4.5</b>	26	<b>87</b>	9.8	<b>7.4</b>	19	<b>91</b>	7.2	<b>7.8</b>	28	<b>153</b>	10.6	<b>13.1</b>	84	<b>312</b>	31.8	<b>26.7</b>
6 Fraser Valley	39	<b>136</b>	5.8	<b>4.7</b>	45	<b>186</b>	6.7	<b>6.5</b>	42	<b>182</b>	6.2	<b>6.4</b>	99	<b>361</b>	14.7	<b>12.6</b>	175	<b>620</b>	26.0	<b>21.6</b>
7 South Fraser Valley	86	<b>371</b>	5.1	<b>5.4</b>	126	<b>478</b>	7.4	<b>6.9</b>	56	<b>239</b>	3.3	<b>3.5</b>	270	<b>1,109</b>	15.9	<b>16.1</b>	403	<b>1,624</b>	23.8	<b>23.6</b>
8 Simon Fraser	34	<b>187</b>	4.3	<b>5.1</b>	58	<b>271</b>	7.3	<b>7.4</b>	32	<b>114</b>	4.0	<b>3.1</b>	186	<b>819</b>	23.3	<b>22.3</b>	195	<b>866</b>	24.5	<b>23.6</b>
9 Coast Garibaldi	16	<b>41</b>	8.4	<b>5.2</b>	19	<b>57</b>	10.0	<b>7.2</b>	5	<b>39</b>	2.6	<b>4.9</b>	31	<b>165</b>	16.3	<b>20.8</b>	48	<b>178</b>	25.3	<b>22.4</b>
10 Central Vancouver Island	26	<b>93</b>	5.4	<b>4.7</b>	36	<b>145</b>	7.5	<b>7.4</b>	39	<b>149</b>	8.1	<b>7.6</b>	56	<b>295</b>	11.7	<b>15.0</b>	119	<b>457</b>	24.8	<b>23.2</b>
11 Upper Island/Central Coast	13	<b>50</b>	5.1	<b>4.7</b>	18	<b>82</b>	7.1	<b>7.7</b>	24	<b>95</b>	9.4	<b>8.9</b>	42	<b>176</b>	16.5	<b>16.5</b>	67	<b>239</b>	26.3	<b>22.4</b>
12 Cariboo	10	<b>42</b>	6.2	<b>5.8</b>	14	<b>57</b>	8.6	<b>7.9</b>	13	<b>78</b>	8.0	<b>10.8</b>	18	<b>76</b>	11.1	<b>10.5</b>	48	<b>188</b>	29.6	<b>26.0</b>
13 North West	8	<b>43</b>	3.1	<b>3.9</b>	14	<b>80</b>	5.5	<b>7.2</b>	31	<b>104</b>	12.2	<b>9.4</b>	22	<b>121</b>	8.7	<b>10.9</b>	63	<b>262</b>	24.8	<b>23.6</b>
14 Peace Liard	6	<b>42</b>	3.4	<b>4.7</b>	7	<b>47</b>	4.0	<b>5.3</b>	18	<b>86</b>	10.3	<b>9.6</b>	23	<b>97</b>	13.2	<b>10.9</b>	47	<b>192</b>	27.0	<b>21.5</b>
15 Northern Interior	14	<b>61</b>	4.2	<b>4.3</b>	15	<b>81</b>	4.5	<b>5.7</b>	23	<b>114</b>	7.0	<b>8.0</b>	37	<b>150</b>	11.2	<b>10.6</b>	64	<b>313</b>	19.4	<b>22.1</b>
16 Vancouver	83	<b>334</b>	6.1	<b>5.8</b>	118	<b>443</b>	8.7	<b>7.7</b>	12	<b>94</b>	0.9	<b>1.6</b>	393	<b>1,580</b>	28.8	<b>27.4</b>	324	<b>1,367</b>	23.8	<b>23.7</b>
17 Burnaby	30	<b>123</b>	5.9	<b>6.0</b>	41	<b>169</b>	8.1	<b>8.3</b>	13	<b>50</b>	2.6	<b>2.5</b>	133	<b>493</b>	26.2	<b>24.2</b>	134	<b>448</b>	26.4	<b>22.0</b>
18 North Shore	17	<b>75</b>	4.5	<b>4.6</b>	27	<b>116</b>	7.2	<b>7.1</b>	10	<b>22</b>	2.7	<b>1.3</b>	114	<b>544</b>	30.2	<b>33.2</b>	97	<b>401</b>	25.7	<b>24.5</b>
19 Richmond	24	<b>81</b>	6.3	<b>5.1</b>	22	<b>95</b>	5.8	<b>6.0</b>	4	<b>21</b>	1.1	<b>1.3</b>	100	<b>433</b>	26.3	<b>27.4</b>	93	<b>404</b>	24.5	<b>25.6</b>
20 Capital	29	<b>123</b>	5.1	<b>4.6</b>	44	<b>185</b>	7.7	<b>6.9</b>	26	<b>105</b>	4.5	<b>3.9</b>	129	<b>609</b>	22.6	<b>22.6</b>	126	<b>615</b>	22.0	<b>22.8</b>
Unknown	-	-	-	-	-	-	-	-	-	-	-	-	-	-	-	-	-	-	-	-
<b>British Columbia</b>	490	<b>2,066</b>	5.2	<b>5.1</b>	683	<b>2,860</b>	7.3	<b>7.1</b>	413	<b>1,840</b>	4.4	<b>4.5</b>	1,834	<b>7,806</b>	19.5	<b>19.3</b>	2,293	<b>9,401</b>	24.4	<b>23.2</b>

Note: Refer to Glossary for definition of terms.

Columns that are bolded and italicized represent year-end totals.

Table 3A

**External Causes of Death  
by Local Health Area**

**October 1 - December 31, 2000  
Year-End, 2000**

Local Health Area	Accidental							Total Acc.	Suicide	Homicide	Other									
	MVA	Poisoning	Falls	Burns/Fire	Drowning	Other Acc.														
01 Fernie	-	-	-	1	-	-	1	2	-	2	-	-								
02 Cranbrook	1	3	-	2	-	3	-	1	2	11	-	4								
03 Kimberley	-	-	-	1	-	1	-	-	-	2	1	1								
04 Windermere	-	3	-	-	-	-	-	-	-	3	1	1								
05 Creston	1	5	-	1	2	-	-	-	2	7	-	1								
06/07 Kootenay Lake/Nelson	1	3	-	2	1	1	-	-	3	2	9	-	5							
09 Castlegar	2	4	-	-	-	-	-	-	2	4	1	3	-	1						
10 Arrow Lakes	1	3	-	1	-	1	-	-	-	5	-	-	-	-						
11 Trail	-	2	-	1	-	2	-	-	2	2	7	-	4	-	-					
12/13 Grand Forks/Kettle Valley	1	2	-	-	-	2	-	-	-	1	4	-	1	-	-					
14 Southern Okanagan	-	3	-	2	2	3	-	-	1	2	3	10	-	5	-	1	1			
15 Penticton	-	3	-	2	1	9	-	-	-	1	1	15	2	4	-	-	-			
16 Keremeos	-	2	-	-	-	-	3	3	-	-	-	3	5	-	-	-	-			
17 Princeton	1	2	-	1	-	-	-	-	-	1	1	4	-	2	-	-	-			
18 Golden	-	2	-	-	-	-	-	-	1	1	1	3	-	-	-	-	-			
19 Revelstoke	2	4	-	-	1	2	-	-	-	1	3	7	-	-	-	-	-			
20 Salmon Arm	6	8	-	-	2	3	-	-	2	-	8	13	-	5	-	-	-			
21 Armstrong-Spallumcheen	1	2	-	-	-	1	-	-	-	-	1	3	-	2	-	-	-			
22 Vernon	-	7	-	1	1	9	-	1	-	1	1	20	1	7	-	-	-			
23 Central Okanagan	4	12	3	7	3	15	-	1	-	3	3	6	13	44	3	17	-	3		
24 Kamloops	2	16	1	8	2	10	1	1	-	2	7	8	42	1	12	-	4	-		
25 100 Mile House	1	4	-	-	1	3	-	-	-	1	2	8	-	1	-	-	-	-		
26 North Thompson	-	1	-	-	-	-	-	1	-	-	-	2	-	-	-	-	-	-		
27 Cariboo-Chilcotin	2	7	-	1	-	3	-	-	-	1	2	12	1	5	-	-	-	-		
28 Quesnel	4	8	-	-	-	2	-	-	1	1	5	11	-	1	-	2	-	-		
29 Lillooet	-	2	-	-	-	2	-	-	-	1	-	5	-	-	-	-	-	1		
30 South Cariboo	-	-	-	-	1	1	-	-	-	1	1	2	-	-	-	-	-	-		
31 Merritt	-	4	-	-	1	3	-	1	-	1	1	10	1	3	-	1	-	-		
32 Hope	2	4	-	-	-	1	-	-	2	1	2	3	9	-	2	-	1	-		
33 Chilliwack	-	5	-	1	1	3	-	1	1	1	4	3	15	1	7	-	1	1		
34 Abbotsford	5	19	1	10	3	5	5	5	-	7	14	46	1	5	-	-	1	1		
35 Langley	3	14	2	4	4	8	1	1	-	2	3	7	13	36	1	6	-	1		
36 Surrey	4	19	4	26	1	5	1	2	-	4	4	10	14	66	1	25	1	1	2	
37 Delta	1	5	-	1	1	3	-	-	1	1	5	3	15	2	5	-	-	-		
38 Richmond	2	7	-	2	2	6	-	-	-	3	4	18	-	6	-	-	1	2		
40 New Westminster	1	3	4	8	1	4	-	-	-	2	6	17	-	4	1	1	-	1		
41 Burnaby	3	10	1	10	3	8	-	1	-	2	1	5	8	36	-	8	-	3	1	
42 Maple Ridge	1	4	1	9	-	1	-	-	-	2	3	4	17	3	7	-	1	-		
43 Coquitlam	1	6	1	6	5	9	-	-	1	-	2	7	24	1	8	-	-	-		
44 North Vancouver	1	2	-	2	1	6	-	-	2	-	2	2	14	1	9	-	-	1		
45 West Vancouver-Bowen Island	-	1	-	2	-	5	-	-	-	1	1	1	9	-	1	-	-	-		
46 Sunshine Coast	-	-	-	2	-	2	-	-	1	-	2	-	7	-	1	-	-	1		
47 Powell River	-	1	-	1	-	-	-	-	-	1	-	3	1	4	-	-	-	-		
48 Howe Sound	3	6	1	3	-	1	1	1	-	1	5	6	17	-	3	-	-	1	1	
49 Bella Coola Valley	-	3	-	-	-	-	-	-	-	-	-	-	3	-	-	-	-	-		
50 Queen Charlotte	-	1	-	-	-	-	-	-	-	-	-	-	1	-	1	-	-	-		
51 Snow Country	1	1	-	-	-	-	-	-	-	1	1	2	-	-	-	-	-	-		
52 Prince Rupert	2	3	2	2	-	3	-	-	5	-	1	4	14	1	2	-	1	-		
53 Upper Skeena	-	-	-	-	-	-	-	-	-	-	-	-	-	1	-	-	-	-		
54 Smithers	-	1	-	1	-	1	-	1	-	-	-	-	4	-	-	-	-	-		
55/93 Burns Lake/Eutsuk	1	1	-	-	1	1	-	-	-	1	2	3	-	-	-	-	-	-		
56 Nechako	1	4	-	-	2	2	-	-	2	2	3	5	11	1	4	-	2	-		
57 Prince George	5	15	1	5	-	2	-	-	3	-	4	6	29	3	12	-	3	-	1	
59 Peace River South	2	5	-	-	1	2	-	-	1	2	4	9	-	3	-	1	-	-		
60 Peace River North	1	7	-	-	-	1	-	-	-	-	1	8	-	3	-	-	-	-		
61 Greater Victoria	2	11	-	21	12	38	-	2	1	6	-	10	15	88	7	38	-	2	-	
62 Sooke	-	3	-	1	-	3	1	1	-	-	1	1	9	1	6	-	1	-	-	
63 Saanich	1	3	-	-	1	5	-	-	-	-	-	2	8	-	3	-	-	-	1	
64 Gulf Islands	-	-	-	-	1	7	-	-	-	-	-	1	7	-	-	-	-	-	-	
65 Cowichan	-	5	2	2	1	5	-	-	1	-	2	3	15	-	4	-	2	-	-	
66 Lake Cowichan	-	-	-	-	-	-	-	-	-	-	-	-	-	-	-	-	-	-	-	
67 Ladysmith	-	1	-	1	-	1	-	-	-	1	-	4	-	1	-	-	-	-	-	
68 Nanaimo	1	8	1	6	3	10	-	-	5	1	3	6	32	5	17	-	-	-	-	
69 Qualicum	1	4	-	-	2	5	-	-	1	1	3	4	13	-	2	-	-	-	-	
70 Alberni	-	4	1	3	1	2	-	-	1	-	1	2	11	1	4	-	2	1	2	
71 Courtenay	1	2	-	5	-	2	-	-	1	-	3	1	13	1	4	-	-	-	-	
72/84 Campbell River/Vancouver Isl. W.	-	5	1	3	1	2	-	1	1	2	3	6	6	19	1	5	-	-	-	
75 Mission	1	2	-	3	-	2	-	-	-	1	1	2	8	1	2	-	-	-	-	
76 Agassiz-Harrison	1	3	-	1	-	-	-	-	-	-	-	1	4	-	-	-	-	-	-	
77 Summerland	-	1	-	-	1	1	1	1	-	-	-	2	3	-	1	-	-	-	-	
78 Enderby	-	1	-	-	1	-	-	-	-	1	1	1	3	-	-	-	-	-	1	
80 Kitimat	-	2	-	-	-	-	-	-	-	-	1	-	3	-	-	-	-	-	-	
81 Fort Nelson	-	2	-	-	-	-	-	-	-	-	-	-	2	-	1	-	-	-	-	
83 Central Coast	-	-	-	-	-	-	-	-	-	-	-	-	-	-	-	-	-	-	-	
85 Vancouver Island North	1	2	-	-	-	1	-	-	-	-	-	1	3	1	4	-	-	-	1	
87/94 Stikine/Telegraph Creek	-	-	-	-	-	-	-	-	-	-	-	-	-	-	-	-	-	-	-	
88 Terrace	-	-	-	-	1	-	-	-	-	1	4	1	5	1	3	-	-	-	-	
92 Nisgaia	-	-	-	-	-	-	-	-	-	-	-	-	-	-	-	-	-	-	-	
161 Vancouver City Centre	-	1	-	7	-	3	-	-	-	2	-	13	-	14	-	1	-	-	2	
162 Vancouver Downtown East Side	-	3	4	41	1	4	-	-	1	-	3	5	52	-	8	-	1	-	2	
163 Vancouver North East	2	7	3	8	-	3	-	-	-	-	5	18	-	2	-	-	-	-	-	
164 Vancouver West Side	-	5	-	3	1	8	-	1	-	3	6	4	23	-	8	-	-	-	-	
165 Vancouver Midtown	-	1	-	5	-	3	-	1	-	1	1	1	11	-	4	-	3	-	-	
166 Vancouver South	-	2	-	3	2	10	-	-	-	1	4	3	19	-	2	-	-	-	2	
Unknown Vancouver	-	-	-	1	-	-	-	-	-	-	-	-	1	-	-	-	-	-	-	
Unknown	-	1	-	-	-	-	-	-	-	1	-	2	-	2	-	-	-	-	-	
<b>British Columbia</b>	<b>81</b>	<b>338</b>	<b>34</b>	<b>238</b>	<b>70</b>	<b>275</b>	<b>14</b>	<b>27</b>	<b>3</b>	<b>53</b>	<b>42</b>	<b>161</b>	<b>244</b>	<b>1,092</b>	<b>48</b>	<b>348</b>	<b>2</b>	<b>39</b>	<b>6</b>	<b>25</b>

Note: Refer to Glossary for definition of terms. Columns bolded and italicized represent year-end totals.

Table 3B

External Causes of Death  
by Health Region

October 1 - December 31, 2000  
Year-End, 2000

Health Region	Accidental											Suicide	Homicide	Other						
	MVA	Poisoning	Falls	Burns/Fire	Drowning	Other Acc.	Total Acc.													
1 East Kootenay	2	<b>13</b>	-	<b>3</b>	1	<b>7</b>	-	-	-	<b>1</b>	2	<b>4</b>	5	<b>28</b>	2	<b>9</b>	-	-	-	-
2 West Kootenay-Boundary	5	<b>14</b>	-	<b>4</b>	1	<b>6</b>	-	-	-	-	2	<b>5</b>	8	<b>29</b>	1	<b>13</b>	-	<b>1</b>	-	-
3 North Okanagan	9	<b>22</b>	-	<b>1</b>	4	<b>16</b>	-	<b>1</b>	-	<b>3</b>	1	<b>3</b>	14	<b>46</b>	1	<b>14</b>	-	-	-	<b>1</b>
4 South Okanagan-Similkameen	5	<b>23</b>	3	<b>12</b>	7	<b>28</b>	4	<b>5</b>	-	<b>3</b>	4	<b>10</b>	23	<b>81</b>	5	<b>29</b>	-	<b>3</b>	1	<b>1</b>
5 Thompson	2	<b>23</b>	1	<b>8</b>	4	<b>16</b>	1	<b>3</b>	-	<b>1</b>	2	<b>10</b>	10	<b>61</b>	2	<b>15</b>	-	<b>5</b>	-	<b>1</b>
6 Fraser Valley	9	<b>33</b>	1	<b>15</b>	4	<b>11</b>	5	<b>6</b>	1	<b>3</b>	3	<b>14</b>	23	<b>82</b>	3	<b>16</b>	-	<b>2</b>	2	<b>2</b>
7 South Fraser Valley	8	<b>38</b>	6	<b>31</b>	6	<b>16</b>	2	<b>3</b>	-	<b>7</b>	8	<b>22</b>	30	<b>117</b>	4	<b>36</b>	1	<b>2</b>	-	<b>2</b>
8 Simon Fraser	3	<b>13</b>	6	<b>23</b>	6	<b>14</b>	-	-	-	<b>1</b>	2	<b>7</b>	17	<b>58</b>	4	<b>19</b>	1	<b>2</b>	-	<b>1</b>
9 Coast Garibaldi	3	<b>7</b>	1	<b>6</b>	-	<b>3</b>	1	<b>1</b>	-	<b>2</b>	1	<b>8</b>	6	<b>27</b>	1	<b>8</b>	-	-	1	<b>2</b>
10 Central Vancouver Island	2	<b>22</b>	4	<b>12</b>	7	<b>23</b>	-	-	-	<b>8</b>	2	<b>10</b>	15	<b>75</b>	6	<b>28</b>	-	<b>4</b>	1	<b>2</b>
11 Upper Island/Central Coast	2	<b>9</b>	1	<b>8</b>	1	<b>5</b>	-	<b>1</b>	1	<b>3</b>	3	<b>9</b>	8	<b>35</b>	3	<b>13</b>	-	-	-	<b>1</b>
12 Cariboo	7	<b>22</b>	-	<b>1</b>	1	<b>8</b>	-	-	-	-	1	<b>3</b>	9	<b>34</b>	1	<b>7</b>	-	<b>2</b>	-	-
13 North West	3	<b>8</b>	2	<b>3</b>	-	<b>5</b>	-	<b>1</b>	-	<b>5</b>	1	<b>7</b>	6	<b>29</b>	2	<b>7</b>	-	<b>1</b>	-	-
14 Peace Liard	3	<b>14</b>	-	-	1	<b>3</b>	-	-	-	-	1	<b>2</b>	5	<b>19</b>	-	<b>7</b>	-	<b>1</b>	-	-
15 Northern Interior	7	<b>20</b>	1	<b>5</b>	3	<b>5</b>	-	-	-	<b>5</b>	2	<b>8</b>	13	<b>43</b>	4	<b>16</b>	-	<b>5</b>	-	<b>1</b>
16 Vancouver	2	<b>19</b>	7	<b>68</b>	4	<b>31</b>	-	<b>2</b>	-	<b>1</b>	5	<b>16</b>	18	<b>137</b>	-	<b>38</b>	-	<b>5</b>	-	<b>6</b>
17 Burnaby	3	<b>10</b>	1	<b>10</b>	3	<b>8</b>	-	<b>1</b>	-	<b>2</b>	1	<b>5</b>	8	<b>36</b>	-	<b>8</b>	-	<b>3</b>	-	<b>1</b>
18 North Shore	1	<b>3</b>	-	<b>4</b>	1	<b>11</b>	-	-	-	<b>2</b>	1	<b>3</b>	3	<b>23</b>	1	<b>10</b>	-	-	-	<b>1</b>
19 Richmond	2	<b>7</b>	-	<b>2</b>	2	<b>6</b>	-	-	-	-	-	<b>3</b>	4	<b>18</b>	-	<b>6</b>	-	-	1	<b>2</b>
20 Capital	3	<b>17</b>	-	<b>22</b>	14	<b>53</b>	1	<b>3</b>	1	<b>6</b>	-	<b>11</b>	19	<b>112</b>	8	<b>47</b>	-	<b>3</b>	-	<b>1</b>
Unknown	-	<b>1</b>	-	-	-	-	-	-	-	-	-	<b>1</b>	-	<b>2</b>	-	<b>2</b>	-	-	-	-
<b>British Columbia</b>	<b>81</b>	<b>338</b>	<b>34</b>	<b>238</b>	<b>70</b>	<b>275</b>	<b>14</b>	<b>27</b>	<b>3</b>	<b>53</b>	<b>42</b>	<b>161</b>	<b>244</b>	<b>1,092</b>	<b>48</b>	<b>348</b>	<b>2</b>	<b>39</b>	<b>6</b>	<b>25</b>

Note: Refer to Glossary for definition of terms.  
Columns that are bolded and italicized represent year-end totals.

External Causes of Death Summary

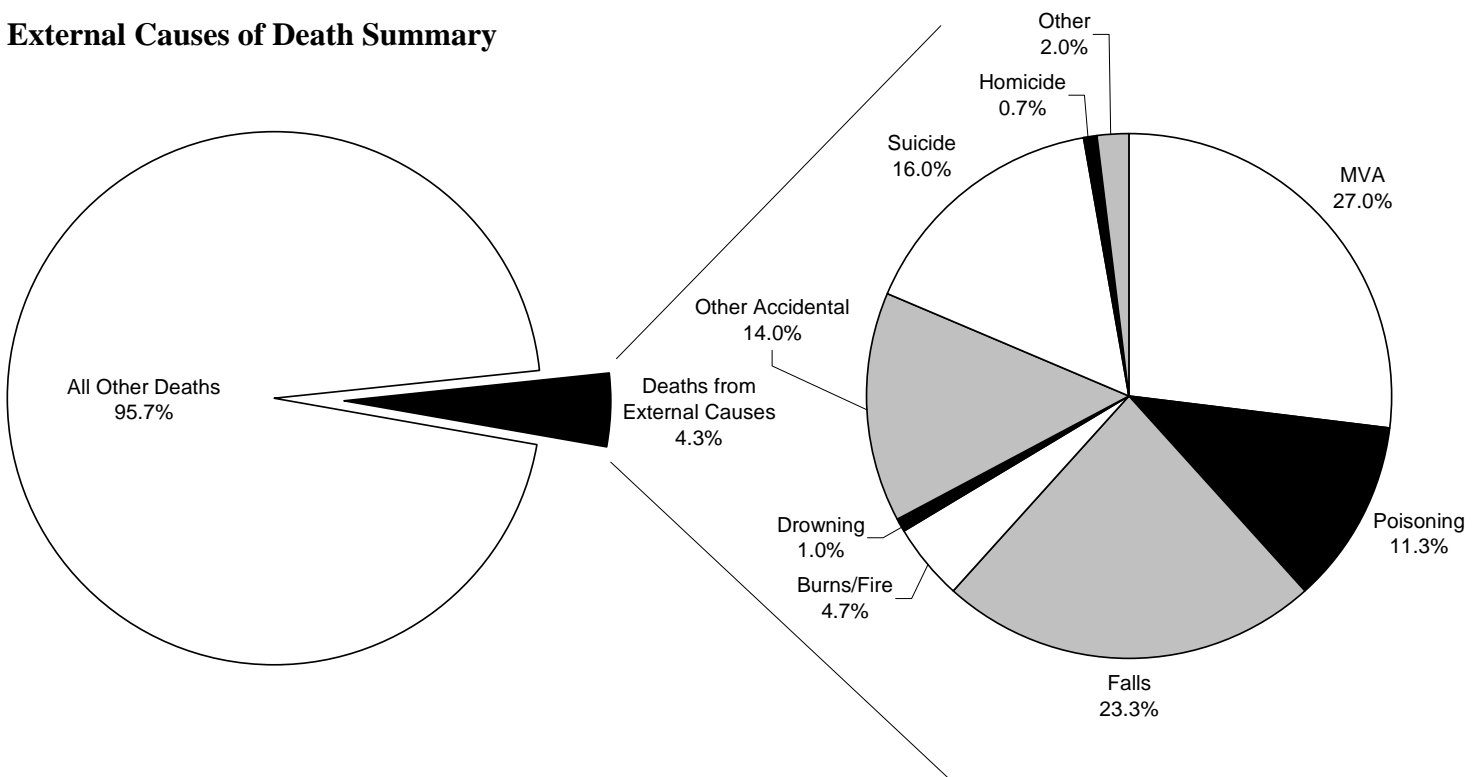


Table 4A

Neoplasm Deaths  
by Local Health Area

October 1 - December 31, 2000

Year-End, 2000

Local Health Area	Lung	Female Breast	Colorectal	Other G.I.	Female Reprod.	Prostate	Blood/Lymph	Other Malign.	Nonmalign. & Unspec.	Total										
01 Fernie	2	5	-	1	3	1	3	-	1	2	-	5	15							
02 Cranbrook	8	19	2	7	1	5	2	8	-	3	6	-	5	16	58					
03 Kimberley	1	5	1	3	-	4	2	6	-	1	2	-	1	-	5	22				
04 Windermere	-	4	-	1	1	-	1	-	-	-	-	-	-	-	1	7				
05 Creston	3	11	-	2	1	3	3	11	-	4	1	2	-	3	2	6	-	10	42	
06/07 Kootenay Lake/Nelson	2	16	-	1	4	9	2	12	-	1	-	4	1	3	1	6	-	3	10	55
09 Castlegar	3	8	-	2	2	3	-	5	-	1	2	3	-	5	2	6	-	-	9	33
10 Arrow Lakes	1	5	-	1	-	2	-	2	-	-	2	-	-	2	3	-	-	-	3	15
11 Trail	2	18	2	2	1	3	2	8	-	3	-	-	1	3	3	9	-	3	11	49
12/13 Grand Forks/Kettle Valley	3	7	-	-	-	3	1	8	-	1	-	2	1	2	1	8	-	-	6	31
14 Southern Okanagan	3	12	1	6	-	1	3	12	-	1	-	4	-	6	4	15	-	-	11	57
15 Penticton	3	26	6	12	3	11	3	15	1	6	2	9	1	10	3	22	1	3	23	114
16 Keremeos	1	10	-	-	-	2	5	-	-	-	2	-	1	-	3	1	1	4	22	
17 Princeton	2	7	1	2	-	1	1	2	-	2	2	-	3	2	3	-	-	8	20	
18 Golden	-	6	-	1	-	-	-	3	-	2	-	-	-	1	-	1	-	-	-	14
19 Revelstoke	2	7	-	-	-	1	-	2	-	1	-	-	1	1	1	-	-	3	13	
20 Salmon Arm	4	18	1	5	1	8	3	18	-	1	-	5	4	8	5	16	-	-	18	79
21 Armstrong-Spallumcheen	2	5	1	1	-	1	-	2	-	-	1	1	4	1	3	-	-	5	17	
22 Vernon	9	28	1	7	5	16	3	23	5	10	2	7	4	13	6	18	1	2	36	124
23 Central Okanagan	20	77	4	19	8	31	19	66	2	13	7	24	4	36	18	60	-	9	82	335
24 Kamloops	15	50	8	17	5	18	11	53	1	4	8	17	6	16	7	37	1	4	62	216
25 100 Mile House	-	4	-	1	-	2	-	3	1	2	-	-	-	3	1	4	-	-	2	19
26 North Thompson	1	3	-	-	1	1	-	-	-	-	-	-	-	1	-	-	-	-	2	5
27 Cariboo-Chilcotin	2	11	-	2	-	1	4	-	-	2	3	-	6	1	3	-	-	6	29	
28 Quesnel	5	13	1	3	-	2	-	5	3	8	-	4	2	3	2	9	-	1	13	48
29 Lillooet	2	5	-	1	-	2	-	1	-	-	-	-	-	1	1	-	-	3	10	
30 South Cariboo	-	3	-	3	-	2	-	1	-	2	-	1	-	2	4	-	-	2	16	
31 Merritt	1	6	-	1	1	4	-	4	-	2	-	-	-	1	-	6	-	-	2	24
32 Hope	-	4	-	1	-	-	2	6	-	-	-	1	-	1	1	6	-	1	3	20
33 Chilliwack	16	46	1	4	4	16	1	27	3	8	2	8	6	14	4	31	1	4	38	158
34 Abbotsford	15	58	5	25	8	28	10	39	5	9	3	19	3	20	10	38	3	4	62	240
35 Langley	10	54	5	15	3	20	13	41	1	8	1	14	7	26	9	25	1	4	50	207
36 Surrey	26	138	11	40	13	54	19	113	5	24	9	32	23	62	28	109	2	10	136	582
37 Delta	13	34	7	18	4	15	9	34	2	5	2	16	4	10	9	34	-	5	50	171
38 Richmond	24	74	6	16	9	24	9	46	5	13	3	9	10	28	4	31	2	5	72	246
40 New Westminster	5	36	5	10	2	16	1	18	4	9	1	4	2	10	11	34	1	3	32	140
41 Burnaby	21	98	5	28	9	33	14	59	2	8	4	16	9	32	13	67	1	9	78	350
42 Maple Ridge	5	39	4	10	2	14	3	19	-	7	-	7	5	18	4	15	2	6	25	135
43 Coquitlam	13	55	8	16	13	34	9	35	3	11	2	9	4	19	19	69	-	6	71	254
44 North Vancouver	21	64	2	17	6	22	9	37	6	13	4	9	7	21	10	45	2	8	67	236
45 West Vancouver-Bowen Island	3	22	4	8	5	16	5	22	2	11	-	10	3	9	9	26	-	1	31	125
46 Sunshine Coast	5	25	1	4	1	7	3	7	1	1	1	4	1	7	6	15	3	4	22	74
47 Powell River	5	19	-	1	-	1	1	5	-	5	1	5	1	8	6	15	-	1	14	60
48 Howe Sound	3	8	1	2	-	1	1	2	1	1	-	-	-	1	2	6	-	-	8	21
49 Bella Coola Valley	-	-	-	-	-	1	-	-	-	1	3	-	-	-	-	-	-	-	1	4
50 Queen Charlotte	-	1	1	1	1	1	-	2	-	-	-	-	-	1	2	-	-	3	7	
51 Snow Country	-	-	-	-	-	1	1	1	-	-	-	-	-	1	-	-	-	-	1	2
52 Prince Rupert	1	7	1	3	2	4	1	6	1	1	-	1	-	-	1	5	1	1	8	28
53 Upper Skeena	-	1	1	1	-	1	-	2	1	2	-	1	-	3	-	-	-	2	11	
54 Smithers	-	5	2	4	1	2	-	4	-	-	-	1	-	1	2	6	-	5	23	
55/93 Burns Lake/Eutsuk	-	1	-	-	-	-	-	2	-	-	-	-	-	-	-	5	-	-	8	
56 Nechako	1	4	-	3	-	3	2	5	2	3	1	2	1	7	1	4	-	1	8	32
57 Prince George	10	37	-	4	1	12	8	18	3	9	2	6	3	16	9	22	1	6	37	130
59 Peace River South	4	9	4	5	1	3	-	2	-	2	2	7	1	1	2	5	1	4	15	38
60 Peace River North	3	10	1	4	-	6	-	1	1	2	-	-	-	3	-	2	-	-	5	28
61 Greater Victoria	32	130	11	45	13	54	21	96	9	37	9	35	10	53	30	118	8	24	143	592
62 Sooke	5	26	1	4	2	10	5	18	1	5	-	1	4	10	3	13	2	3	23	90
63 Saanich	8	38	-	11	8	18	5	32	1	10	5	19	2	22	3	25	1	3	33	178
64 Gulf Islands	3	10	-	1	4	10	-	2	1	3	2	6	1	4	1	4	-	-	12	40
65 Cowichan	7	34	3	10	3	8	4	20	1	7	2	7	1	13	4	23	-	1	25	123
66 Lake Cowichan	1	5	-	1	3	3	3	5	-	1	1	-	-	-	1	-	1	6	16	
67 Ladysmith	-	12	-	1	1	6	4	10	-	-	-	2	2	6	3	8	-	2	10	47
68 Nanaimo	16	58	4	17	8	18	10	32	3	9	3	18	6	28	11	43	2	6	63	229
69 Qualicum	8	32	-	5	6	12	6	19	1	6	1	7	2	16	4	27	2	5	30	129
70 Alberni	6	20	-	9	2	6	4	13	2	6	-	5	-	5	4	14	1	2	19	80
71 Courtenay	6	32	5	10	1	8	4	28	-	5	1	10	6	11	3	16	1	3	27	123
72/84 Campbell River/Vancouver Isl. W.	6	29	-	5	3	9	-	12	1	3	2	5	-	2	1	14	-	1	13	80
75 Mission	6	21	1	5	1	2	1	6	-	2	1	5	-	5	5	18	-	2	15	66
76 Agassiz-Harrison	-	6	-	2	-	1	-	2	-	2	1	3	1	3	-	1	-	-	2	20
77 Summerland	1	4	-	1	1	3	3	5	-	1	-	3	2	4	3	6	-	-	10	27
78 Enderby	-	3	-	-	-	1	-	1	-	-	1	1	-	2	-	2	-	1	1	11
80 Kitimat	-	2	-	2	1	1	-	2	-	-	-	-	-	-	-	5	-	-	1	12
81 Fort Nelson	-	1	-	1	-	1	-	2	-	-	-	-	-	1	1	2	-	-	1	8
83 Central Coast	-	-	-	-	-	-	-	-	-	-	-	-	-	-	-	-	-	-	-	-
85 Vancouver Island North	1	6	-	1	2	3	2	2	-	-	-	-	1	2	-	2	-	1	6	17
87/94 Stikine/Telegraph Creek	-	1	-	-	-	-	-	-	-	-	-	-	-	-	-	-	-	-	-	1
88 Terrace	1	5	1	2	1	5	1	4	-	-	-	-	-	3	-	2	-	-	4	21
92 Nisgaia	1	3	-	-	-	-	-	-	-	-	-	-	-	-	-	-	-	-	1	3
161 Vancouver City Centre	11	27	5	14	5	14	3	20	6	12	4	15	5	17	5	17	1	6	45	142
162 Vancouver Downtown East Side	6	33	-	6	3	12	8	22	1	3	4	6	1	6	8	28	1	2	32	118
163 Vancouver North East	10	50	2	12	4	16	6	33	-	6	1	2	4	15	8	34	3	5	38	173
164 Vancouver West Side	8	32	7	20	3	20	4	28	4	10	3	10	4	21	13	47	2	5	48	193
165 Vancouver Midtown	5	28	3	12	-	8	7	26	1	7	2	9	5	10	7	20	-	6	30	126
166 Vancouver South	15	61	1	11	5	21	6	38	1	9	5	17	6	18	9	36	-	8	48	219
Unknown Vancouver	-	-	-	-	-	-	-	-	-	-	-	-	-	-	-	-	-	-	-	-
Unknown	-	-	-	-	-	-	-	-	-	-	-	-	-	-	-	-	-	-	-	-
<b>British Columbia</b>	<b>464</b>	<b>1,947</b>	<b>148</b>	<b>546</b>	<b>198</b>	<b>741</b>	<b>287</b>	<b>1,314</b>	<b>94</b>	<b>358</b>	<b>117</b>	<b>472</b>	<b>178</b>	<b>731</b>	<b>353</b>	<b>1,397</b>	<b>49</b>	<b>197</b>	<b>1,888</b>	<b>7,703</b>

Note: Refer to Glossary for definition of terms. Columns that are bolded and italicized represent year-end totals.

Table 4B

**Neoplasm Deaths  
by Health Region**

October 1 - December 31, 2000  
Year-End, 2000

Health Region	Lung		Female Breast		Colorectal	Other G.I.		Female Reprod.		Prostate	Blood/Lymph		Other Malign.		Nonmalign. & Unspec.		Total			
1 East Kootenay	14	<b>50</b>	3	<b>13</b>	4	<b>16</b>	8	<b>32</b>	-	<b>7</b>	5	<b>11</b>	-	<b>11</b>	3	<b>17</b>	-	<b>1</b>	37	<b>158</b>
2 West Kootenay-Boundary	11	<b>54</b>	2	<b>6</b>	7	<b>20</b>	5	<b>35</b>	-	<b>6</b>	2	<b>11</b>	3	<b>13</b>	9	<b>32</b>	-	<b>6</b>	39	<b>183</b>
3 North Okanagan	17	<b>61</b>	3	<b>13</b>	6	<b>27</b>	6	<b>46</b>	5	<b>12</b>	3	<b>14</b>	9	<b>28</b>	13	<b>40</b>	1	<b>3</b>	63	<b>244</b>
4 South Okanagan-Similkameen	30	<b>136</b>	12	<b>40</b>	12	<b>47</b>	31	<b>105</b>	3	<b>21</b>	11	<b>44</b>	7	<b>60</b>	30	<b>109</b>	2	<b>13</b>	138	<b>575</b>
5 Thompson	19	<b>67</b>	8	<b>22</b>	7	<b>27</b>	11	<b>59</b>	1	<b>8</b>	8	<b>18</b>	6	<b>18</b>	10	<b>48</b>	1	<b>4</b>	71	<b>271</b>
6 Fraser Valley	37	<b>135</b>	7	<b>37</b>	13	<b>47</b>	14	<b>80</b>	8	<b>21</b>	7	<b>36</b>	10	<b>43</b>	20	<b>94</b>	4	<b>11</b>	120	<b>504</b>
7 South Fraser Valley	49	<b>226</b>	23	<b>73</b>	20	<b>89</b>	41	<b>188</b>	8	<b>37</b>	12	<b>62</b>	34	<b>98</b>	46	<b>168</b>	3	<b>19</b>	236	<b>960</b>
8 Simon Fraser	23	<b>130</b>	17	<b>36</b>	17	<b>64</b>	13	<b>72</b>	7	<b>27</b>	3	<b>20</b>	11	<b>47</b>	34	<b>118</b>	3	<b>15</b>	128	<b>529</b>
9 Coast Garibaldi	13	<b>52</b>	2	<b>7</b>	1	<b>9</b>	5	<b>14</b>	2	<b>7</b>	2	<b>9</b>	2	<b>16</b>	14	<b>36</b>	3	<b>5</b>	44	<b>155</b>
10 Central Vancouver Island	38	<b>161</b>	7	<b>42</b>	21	<b>53</b>	31	<b>99</b>	7	<b>28</b>	7	<b>40</b>	11	<b>68</b>	26	<b>116</b>	5	<b>17</b>	153	<b>624</b>
11 Upper Island/Central Coast	13	<b>67</b>	5	<b>16</b>	6	<b>20</b>	6	<b>42</b>	1	<b>8</b>	3	<b>15</b>	7	<b>15</b>	4	<b>32</b>	1	<b>5</b>	46	<b>220</b>
12 Cariboo	7	<b>28</b>	1	<b>6</b>	-	<b>5</b>	1	<b>12</b>	4	<b>10</b>	3	<b>10</b>	2	<b>12</b>	4	<b>16</b>	-	<b>1</b>	22	<b>100</b>
13 North West	3	<b>25</b>	6	<b>13</b>	6	<b>14</b>	3	<b>21</b>	2	<b>3</b>	-	<b>3</b>	-	<b>8</b>	4	<b>20</b>	1	<b>1</b>	25	<b>108</b>
14 Peace Liard	7	<b>20</b>	5	<b>10</b>	1	<b>10</b>	-	<b>5</b>	1	<b>4</b>	2	<b>7</b>	1	<b>5</b>	3	<b>9</b>	1	<b>4</b>	21	<b>74</b>
15 Northern Interior	11	<b>42</b>	-	<b>7</b>	1	<b>15</b>	10	<b>25</b>	5	<b>12</b>	3	<b>8</b>	4	<b>23</b>	10	<b>31</b>	1	<b>7</b>	45	<b>170</b>
16 Vancouver	55	<b>231</b>	18	<b>75</b>	20	<b>91</b>	34	<b>167</b>	13	<b>47</b>	19	<b>59</b>	25	<b>87</b>	50	<b>182</b>	7	<b>32</b>	241	<b>971</b>
17 Burnaby	21	<b>98</b>	5	<b>28</b>	9	<b>33</b>	14	<b>59</b>	2	<b>8</b>	4	<b>16</b>	9	<b>32</b>	13	<b>67</b>	1	<b>9</b>	78	<b>350</b>
18 North Shore	24	<b>86</b>	6	<b>25</b>	11	<b>38</b>	14	<b>59</b>	8	<b>24</b>	4	<b>19</b>	10	<b>30</b>	19	<b>71</b>	2	<b>9</b>	98	<b>361</b>
19 Richmond	24	<b>74</b>	6	<b>16</b>	9	<b>24</b>	9	<b>46</b>	5	<b>13</b>	3	<b>9</b>	10	<b>28</b>	4	<b>31</b>	2	<b>5</b>	72	<b>246</b>
20 Capital	48	<b>204</b>	12	<b>61</b>	27	<b>92</b>	31	<b>148</b>	12	<b>55</b>	16	<b>61</b>	17	<b>89</b>	37	<b>160</b>	11	<b>30</b>	211	<b>900</b>
Unknown	-	-	-	-	-	-	-	-	-	-	-	-	-	-	-	-	-	-	-	-
<b>British Columbia</b>	464	<b>1,947</b>	148	<b>546</b>	198	<b>741</b>	287	<b>1,314</b>	94	<b>358</b>	117	<b>472</b>	178	<b>731</b>	353	<b>1,397</b>	49	<b>197</b>	1,888	<b>7,703</b>

Note: Refer to Glossary for definition of terms.  
Columns that are bolded and italicized represent year-end totals.

**Neoplasm Death Summary**

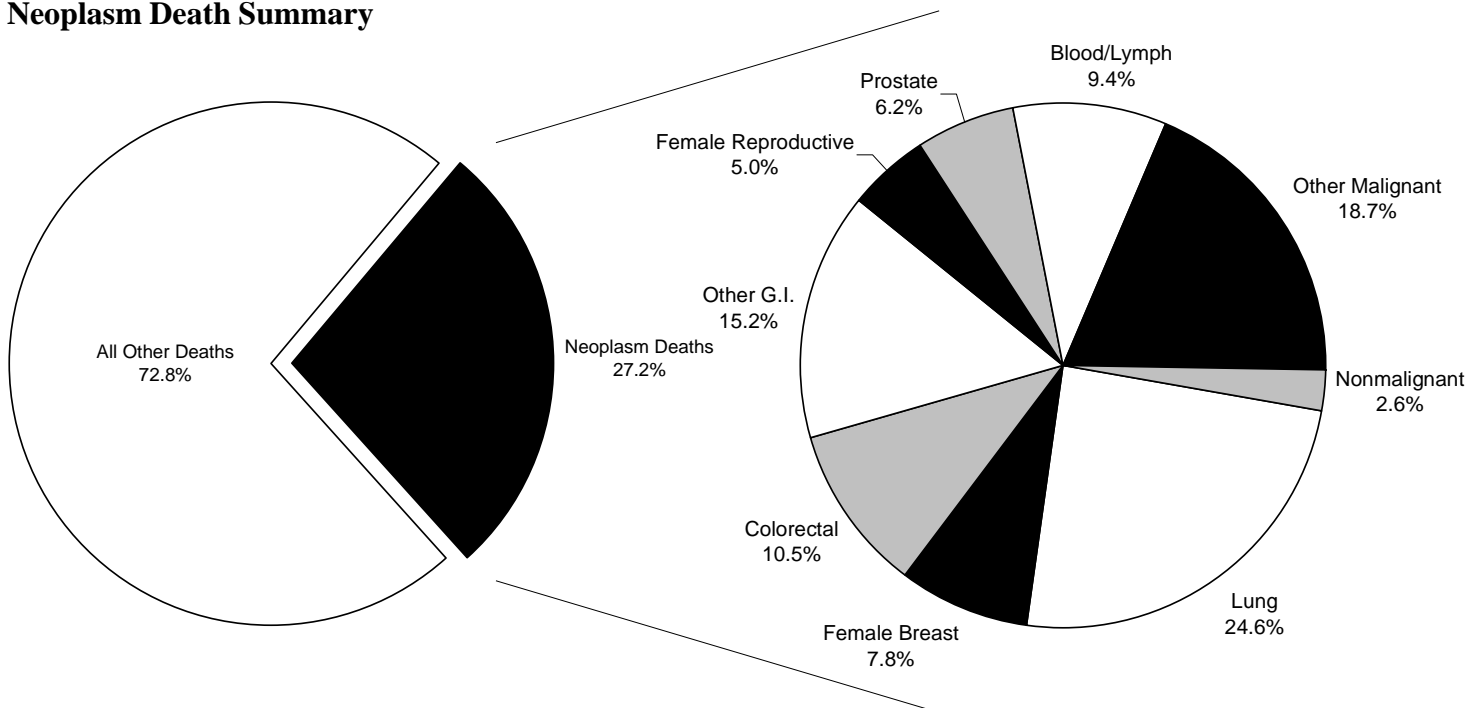


Table 5A

Heart Disease Deaths  
by Local Health Area

October 1 - December 31, 2000

Year-End, 2000

Local Health Area	Rheumatic/ Valvular	Hypertension	Ischemic	Conductive & Dysrhythmia	Heart Failure	Congenital	Other	Total
01 Fernie	-	-	3	16	1	-	1	4
02 Cranbrook	1	2	2	7	1	2	1	12
03 Kimberley	-	2	-	7	-	-	1	8
04 Windermere	-	-	-	2	9	-	-	3
05 Creston	-	3	-	5	26	2	2	7
06/07 Kootenay Lake/Nelson	-	1	-	14	48	2	5	17
09 Castlegar	-	1	1	4	17	-	-	5
10 Arrow Lakes	-	-	-	1	8	-	-	1
11 Trail	1	2	1	3	10	4	2	16
12/13 Grand Forks/Kettle Valley	-	-	-	8	25	1	5	11
14 Southern Okanagan	-	2	-	1	6	32	5	8
15 Penticton	2	8	2	4	15	72	2	26
16 Keremeos	-	-	-	-	4	-	2	1
17 Princeton	-	-	-	3	6	-	3	3
18 Golden	-	-	-	1	6	-	-	1
19 Revelstoke	-	-	-	1	2	9	-	2
20 Salmon Arm	1	2	-	1	10	34	2	15
21 Armstrong-Spallumcheen	-	-	-	1	3	14	-	3
22 Vernon	-	5	1	1	24	96	2	32
23 Central Okanagan	4	13	3	10	56	181	6	84
24 Kamloops	1	8	-	7	35	131	4	53
25 100 Mile House	-	-	1	1	6	29	1	8
26 North Thompson	-	1	-	-	2	4	-	2
27 Cariboo-Chilcotin	-	2	-	-	6	19	1	8
28 Quesnel	1	2	-	-	8	27	-	11
29 Lillooet	-	1	-	1	1	4	1	2
30 South Cariboo	1	1	-	2	1	8	-	3
31 Merritt	-	-	-	-	2	12	-	5
32 Hope	-	-	-	-	3	12	-	3
33 Chilliwack	2	5	1	3	27	109	-	37
34 Abbotsford	1	10	4	10	38	169	-	51
35 Langley	6	12	1	3	36	131	2	51
36 Surrey	5	14	6	23	123	424	7	155
37 Delta	1	5	1	3	29	113	1	38
38 Richmond	1	9	3	6	49	144	3	60
40 New Westminster	-	1	-	1	23	92	1	32
41 Burnaby	10	19	2	11	73	278	4	102
42 Maple Ridge	1	5	1	1	23	80	4	33
43 Coquitlam	1	4	2	4	40	151	3	55
44 North Vancouver	1	8	2	5	31	134	2	42
45 West Vancouver-Bowen Island	-	1	-	3	23	82	1	25
46 Sunshine Coast	-	-	2	3	10	41	2	16
47 Powell River	2	3	-	-	6	24	1	10
48 Howe Sound	-	-	-	-	2	15	1	5
49 Bella Coola Valley	-	-	-	-	1	3	-	1
50 Queen Charlotte	-	-	-	2	1	4	1	2
51 Snow Country	-	-	-	-	-	-	2	-
52 Prince Rupert	-	-	-	1	5	11	1	7
53 Upper Skeena	1	1	-	1	-	3	-	2
54 Smithers	1	2	-	-	2	7	-	5
55/93 Burns Lake/Eutsuk	-	-	-	-	-	2	-	8
56 Nechako	-	1	-	1	4	16	-	4
57 Prince George	2	2	1	5	16	58	-	29
59 Peace River South	-	-	-	-	6	37	-	6
60 Peace River North	-	-	-	1	3	12	-	3
61 Greater Victoria	4	18	10	28	90	346	7	140
62 Sooke	1	1	-	2	8	36	4	14
63 Saanich	3	6	1	2	23	84	-	32
64 Gulf Islands	1	1	-	-	9	28	-	12
65 Cowichan	-	3	-	1	15	65	2	21
66 Lake Cowichan	-	-	-	1	2	7	-	2
67 Ladysmith	-	-	-	2	11	39	1	15
68 Nanaimo	-	2	1	4	42	152	3	54
69 Qualicum	-	3	-	2	16	68	-	21
70 Alberni	2	4	-	-	8	37	1	14
71 Courtenay	3	6	-	2	13	67	3	22
72/84 Campbell River/Vancouver Isl. W.	2	3	-	1	6	35	1	9
75 Mission	1	2	-	1	7	34	-	12
76 Agassiz-Harrison	-	-	-	1	3	13	1	4
77 Summerland	1	3	-	1	9	30	-	10
78 Enderby	-	-	1	1	1	9	-	3
80 Kitimat	-	1	-	1	1	8	-	2
81 Fort Nelson	-	-	-	-	1	2	-	1
83 Central Coast	-	-	-	-	-	2	-	3
85 Vancouver Island North	-	1	-	-	1	12	-	2
87/94 Stikine/Telegraph Creek	-	-	-	-	-	-	-	1
88 Terrace	-	1	-	-	3	17	-	6
92 Nisgaia	-	-	-	-	-	2	-	2
161 Vancouver City Centre	3	9	1	6	25	108	2	34
162 Vancouver Downtown East Side	1	2	-	3	14	70	2	21
163 Vancouver North East	2	7	1	4	18	99	-	26
164 Vancouver West Side	5	12	-	6	33	126	3	49
165 Vancouver Midtown	-	3	-	5	18	82	2	22
166 Vancouver South	1	5	4	8	40	148	1	58
Unknown Vancouver	-	-	-	-	-	-	-	-
Unknown	-	-	-	-	-	1	-	1
<b>British Columbia</b>	<b>77</b>	<b>251</b>	<b>55</b>	<b>205</b>	<b>1,233</b>	<b>4,814</b>	<b>91</b>	<b>1,730</b>

Note: Refer to Glossary for definition of terms. Columns bolded and italicized represent year-end totals.

Table 5B

**Heart Disease Deaths  
by Health Region**

October 1 - December 31, 2000  
Year-End, 2000

Health Region	Rheumatic/ Valvular	Hypertension	Ischemic	Conductive & Dysrhythmia	Heart Failure	Congenital	Other	Total								
1 East Kootenay	1	7	1	2	25	<b>109</b>	2	5	5	23	-	-	1	8	35	<b>154</b>
2 West Kootenay-Boundary	1	4	2	4	37	<b>144</b>	3	12	5	17	-	-	2	6	51	<b>187</b>
3 North Okanagan	1	7	2	5	40	<b>162</b>	4	11	5	32	1	3	2	21	54	<b>241</b>
4 South Okanagan-Similkameen	7	26	5	16	89	<b>325</b>	8	34	8	49	-	1	15	44	133	<b>495</b>
5 Thompson	2	11	-	10	41	<b>159</b>	5	16	10	33	1	2	5	21	65	<b>252</b>
6 Fraser Valley	4	17	5	15	78	<b>337</b>	1	21	14	47	2	2	3	18	105	<b>457</b>
7 South Fraser Valley	12	31	8	29	188	<b>668</b>	10	42	17	71	-	3	9	45	244	<b>889</b>
8 Simon Fraser	2	10	3	6	86	<b>323</b>	8	25	10	43	-	-	11	38	120	<b>445</b>
9 Coast Garibaldi	2	3	2	3	18	<b>80</b>	4	14	5	19	-	-	-	7	32	<b>126</b>
10 Central Vancouver Island	2	12	1	10	94	<b>368</b>	7	25	16	53	1	4	6	30	126	<b>502</b>
11 Upper Island/Central Coast	5	10	-	3	20	<b>116</b>	4	19	3	17	-	1	1	15	33	<b>181</b>
12 Cariboo	1	4	1	1	21	<b>78</b>	2	4	2	13	-	1	1	5	29	<b>106</b>
13 North West	2	5	-	5	12	<b>52</b>	2	11	3	11	1	2	4	7	23	<b>93</b>
14 Peace Liard	-	-	-	1	10	<b>51</b>	-	2	-	6	-	1	-	3	11	<b>64</b>
15 Northern Interior	2	3	1	6	20	<b>76</b>	-	7	4	13	1	3	5	14	32	<b>122</b>
16 Vancouver	12	38	6	32	148	<b>633</b>	10	55	24	103	-	-	10	41	210	<b>902</b>
17 Burnaby	10	19	2	11	73	<b>278</b>	4	17	12	44	-	2	1	14	102	<b>385</b>
18 North Shore	1	9	2	8	54	<b>216</b>	3	19	7	37	-	-	-	7	68	<b>296</b>
19 Richmond	1	9	3	6	49	<b>144</b>	3	17	1	7	1	3	2	11	59	<b>197</b>
20 Capital	9	26	11	32	130	<b>494</b>	11	63	27	100	-	3	10	48	198	<b>766</b>
Unknown	-	-	-	-	-	<b>1</b>	-	-	-	-	-	-	-	-	-	<b>1</b>
<b>British Columbia</b>	<b>77</b>	<b>251</b>	<b>55</b>	<b>205</b>	<b>1,233</b>	<b>4,814</b>	<b>91</b>	<b>419</b>	<b>178</b>	<b>738</b>	<b>8</b>	<b>31</b>	<b>88</b>	<b>403</b>	<b>1,730</b>	<b>6,861</b>

Note: Refer to Glossary for definition of terms.  
Columns that are bolded and italicized represent year-end totals.

**Heart Disease Death Summary**

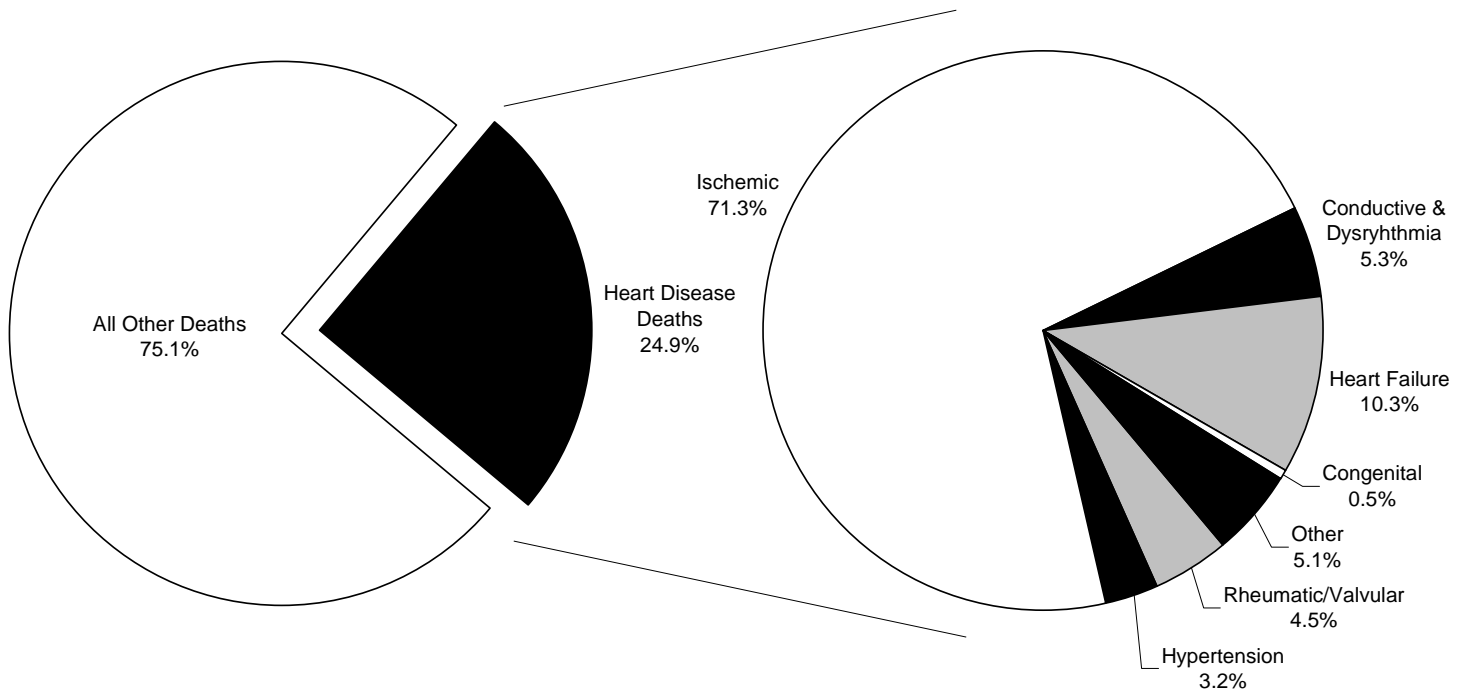


Table 6A

Respiratory Disease Death Statistics  
by Local Health Area

October 1 - December 31, 2000

Year-End, 2000

Local Health Area	Emphysema	COPD	Pneumonia	Influenza	Asthma	Lung Disease Ext. Agents	Pulmonary Fibrosis	Other Respiratory	Total	
01 Fernie	-	1	6	-	3	-	1	-	10	
02 Cranbrook	1	2	10	2	6	1	-	1	19	
03 Kimberley	-	2	8	1	2	-	1	1	12	
04 Windermere	-	1	3	-	-	-	-	-	3	
05 Creston	-	1	6	2	3	-	1	1	11	
06/07 Kootenay Lake/Nelson	1	-	10	-	3	-	1	2	19	
09 Castlegar	-	-	1	3	5	-	1	-	7	
10 Arrow Lakes	-	2	5	-	-	3	-	-	8	
11 Trail	2	4	9	-	4	-	1	-	18	
12/13 Grand Forks/Kettle Valley	1	1	2	2	8	-	-	2	13	
14 Southern Okanagan	2	4	2	9	1	4	1	1	21	
15 Penticton	3	3	21	7	19	-	1	2	53	
16 Keremeos	-	-	-	-	-	-	-	1	1	
17 Princeton	1	1	3	-	4	-	1	-	9	
18 Golden	-	-	1	-	2	-	-	-	4	
19 Revelstoke	2	-	-	-	-	-	1	1	4	
20 Salmon Arm	1	2	14	3	10	-	1	2	28	
21 Armstrong-Spallumcheen	1	1	2	-	1	-	-	-	4	
22 Vernon	1	1	2	17	8	23	-	3	53	
23 Central Okanagan	3	6	10	45	11	45	2	4	115	
24 Kamloops	5	5	25	5	22	1	1	2	64	
25 100 Mile House	-	3	5	-	1	-	-	1	8	
26 North Thompson	-	-	-	-	1	-	-	-	1	
27 Cariboo-Chilcotin	-	1	3	1	2	-	1	2	9	
28 Quesnel	1	1	9	1	4	1	-	1	16	
29 Lillooet	-	-	2	-	-	-	-	-	2	
30 South Cariboo	1	1	5	-	3	-	-	-	9	
31 Merritt	-	-	4	1	5	-	-	1	11	
32 Hope	-	1	3	-	3	-	-	-	7	
33 Chilliwack	1	5	18	8	22	1	2	4	53	
34 Abbotsford	1	3	4	27	11	45	1	1	90	
35 Langley	2	6	32	12	33	2	1	1	79	
36 Surrey	1	4	24	77	16	74	6	3	190	
37 Delta	-	6	18	2	16	1	-	3	45	
38 Richmond	-	10	28	10	33	1	1	1	76	
40 New Westminster	2	8	20	6	21	2	3	1	57	
41 Burnaby	1	6	8	45	18	66	2	6	137	
42 Maple Ridge	2	5	22	3	16	-	2	2	46	
43 Coquitlam	1	1	10	39	12	31	2	1	86	
44 North Vancouver	1	3	8	30	17	38	4	1	88	
45 West Vancouver-Bowen Island	1	3	5	13	11	40	1	1	64	
46 Sunshine Coast	-	1	6	2	7	-	2	1	17	
47 Powell River	-	2	6	1	6	-	1	1	14	
48 Howe Sound	-	-	5	1	2	-	-	1	9	
49 Bella Coola Valley	-	-	-	-	-	-	-	-	-	
50 Queen Charlotte	-	-	-	-	-	-	-	-	-	
51 Snow Country	-	-	-	-	-	-	-	-	-	
52 Prince Rupert	-	1	5	-	2	-	-	2	9	
53 Upper Skeena	-	1	2	1	2	-	-	1	5	
54 Smithers	-	1	4	1	2	-	1	1	8	
55/93 Burns Lake/Eutsuk	1	1	1	2	2	-	-	-	5	
56 Nechako	-	-	1	-	2	-	-	-	3	
57 Prince George	2	3	22	2	14	-	1	-	40	
59 Peace River South	-	2	5	3	5	-	1	1	13	
60 Peace River North	1	1	3	-	2	-	-	1	8	
61 Greater Victoria	1	7	19	85	23	93	1	10	238	
62 Sooke	-	4	13	2	7	-	1	-	22	
63 Saanich	1	5	2	14	4	18	1	1	50	
64 Gulf Islands	1	1	2	7	-	4	-	-	13	
65 Cowichan	1	1	6	19	2	16	-	1	40	
66 Lake Cowichan	-	-	2	-	-	-	-	-	2	
67 Ladysmith	-	2	6	2	6	-	-	1	13	
68 Nanaimo	1	2	6	30	9	19	3	1	69	
69 Qualicum	-	5	10	5	12	-	1	2	33	
70 Alberni	1	2	3	6	-	4	1	1	21	
71 Courtenay	3	3	15	3	8	1	1	1	31	
72/84 Campbell River/Vancouver Isl. W.	1	3	2	8	-	3	-	2	18	
75 Mission	-	1	13	6	12	-	1	1	32	
76 Agassiz-Harrison	-	-	-	2	2	-	-	-	2	
77 Summerland	-	2	8	-	2	-	-	1	11	
78 Enderby	-	-	3	-	-	-	1	1	4	
80 Kitimat	-	1	2	-	1	-	-	-	3	
81 Fort Nelson	-	-	-	-	-	-	-	-	-	
83 Central Coast	-	-	-	-	3	-	-	-	3	
85 Vancouver Island North	-	1	2	-	-	-	1	1	4	
87/94 Stikine/Telegraph Creek	-	-	-	-	-	-	-	-	-	
88 Terrace	-	3	8	2	11	-	-	2	23	
92 Nisgaia	-	-	-	-	-	-	-	-	-	
161 Vancouver City Centre	3	4	20	10	21	1	2	5	57	
162 Vancouver Downtown East Side	2	4	23	2	10	2	1	1	43	
163 Vancouver North East	2	2	5	21	3	20	7	3	58	
164 Vancouver West Side	3	5	7	19	14	57	3	5	96	
165 Vancouver Midtown	4	8	24	5	20	3	2	4	59	
166 Vancouver South	1	3	9	27	12	48	1	2	90	
Unknown Vancouver	-	-	-	-	-	-	-	-	-	
Unknown	-	-	-	-	-	-	-	-	-	
<b>British Columbia</b>	<b>27</b>	<b>105</b>	<b>256</b>	<b>1,043</b>	<b>291</b>	<b>1,058</b>	<b>6</b>	<b>79</b>	<b>697</b>	<b>2,716</b>

Note: Refer to Glossary for definition of terms. Columns bolded and italicized represent year-end totals.

Table 6B

**Respiratory Disease Death Statistics  
by Health Region**

October 1 - December 31, 2000  
Year-End, 2000

Health Region	Emphysema		COPD		Pneumonia		Influenza		Lung Disease		Pulmonary		Other		Total	
1 East Kootenay	-	<b>1</b>	7	<b>34</b>	5	<b>13</b>	-	<b>4</b>	-	<b>1</b>	-	<b>2</b>	1	<b>2</b>	13	<b>59</b>
2 West Kootenay-Boundary	-	<b>4</b>	7	<b>27</b>	5	<b>20</b>	-	<b>5</b>	-	-	-	<b>1</b>	-	<b>2</b>	2	<b>6</b>
3 North Okanagan	1	<b>5</b>	5	<b>36</b>	11	<b>34</b>	-	<b>2</b>	-	<b>1</b>	2	<b>2</b>	-	<b>2</b>	3	<b>11</b>
4 South Okanagan-Similkameen	5	<b>14</b>	18	<b>86</b>	19	<b>74</b>	-	<b>7</b>	2	<b>3</b>	2	<b>5</b>	4	<b>7</b>	3	<b>14</b>
5 Thompson	1	<b>6</b>	5	<b>36</b>	6	<b>31</b>	-	<b>1</b>	-	<b>1</b>	-	-	1	<b>2</b>	3	<b>10</b>
6 Fraser Valley	1	<b>4</b>	11	<b>61</b>	27	<b>84</b>	1	<b>2</b>	2	<b>7</b>	1	<b>4</b>	1	<b>7</b>	4	<b>15</b>
7 South Fraser Valley	1	<b>6</b>	36	<b>127</b>	30	<b>123</b>	-	<b>9</b>	1	<b>4</b>	4	<b>7</b>	4	<b>12</b>	8	<b>26</b>
8 Simon Fraser	1	<b>5</b>	23	<b>81</b>	21	<b>68</b>	2	<b>7</b>	1	<b>5</b>	2	<b>8</b>	2	<b>5</b>	3	<b>10</b>
9 Coast Garibaldi	-	-	3	<b>17</b>	4	<b>15</b>	-	-	-	-	-	<b>3</b>	2	<b>3</b>	1	<b>2</b>
10 Central Vancouver Island	3	<b>5</b>	22	<b>73</b>	18	<b>57</b>	-	<b>4</b>	2	<b>7</b>	1	<b>2</b>	2	<b>13</b>	3	<b>17</b>
11 Upper Island/Central Coast	1	<b>6</b>	6	<b>25</b>	3	<b>14</b>	1	<b>1</b>	2	<b>2</b>	-	<b>2</b>	2	<b>3</b>	-	<b>3</b>
12 Cariboo	-	<b>1</b>	5	<b>17</b>	2	<b>7</b>	-	<b>1</b>	-	<b>1</b>	-	-	1	<b>2</b>	3	<b>4</b>
13 North West	-	-	7	<b>21</b>	4	<b>18</b>	-	-	-	-	-	<b>1</b>	-	<b>3</b>	1	<b>5</b>
14 Peace Liard	1	<b>1</b>	2	<b>8</b>	3	<b>7</b>	-	-	1	<b>1</b>	1	<b>1</b>	-	-	1	<b>3</b>
15 Northern Interior	1	<b>3</b>	4	<b>25</b>	2	<b>18</b>	-	-	-	<b>1</b>	-	-	-	<b>1</b>	-	<b>7</b>
16 Vancouver	6	<b>19</b>	37	<b>134</b>	46	<b>176</b>	1	<b>17</b>	3	<b>5</b>	5	<b>22</b>	3	<b>8</b>	3	<b>22</b>
17 Burnaby	1	<b>6</b>	8	<b>45</b>	18	<b>66</b>	-	<b>2</b>	-	<b>2</b>	2	<b>6</b>	1	<b>3</b>	1	<b>7</b>
18 North Shore	2	<b>6</b>	13	<b>43</b>	28	<b>78</b>	-	<b>5</b>	-	<b>1</b>	-	<b>3</b>	-	<b>3</b>	2	<b>13</b>
19 Richmond	-	-	10	<b>28</b>	10	<b>33</b>	-	<b>1</b>	1	<b>1</b>	-	-	-	<b>4</b>	3	<b>9</b>
20 Capital	2	<b>13</b>	27	<b>119</b>	29	<b>122</b>	1	<b>11</b>	2	<b>5</b>	4	<b>10</b>	4	<b>17</b>	4	<b>26</b>
Unknown	-	-	-	-	-	-	-	-	-	-	-	-	-	-	-	-
<b>British Columbia</b>	<b>27</b>	<b>105</b>	<b>256</b>	<b>1,043</b>	<b>291</b>	<b>1,058</b>	<b>6</b>	<b>79</b>	<b>17</b>	<b>48</b>	<b>24</b>	<b>79</b>	<b>27</b>	<b>99</b>	<b>49</b>	<b>205</b>

Note: Refer to Glossary for definition of terms.  
Columns that are bolded and italicized represent year-end totals.

**Respiratory Disease Death Summary**

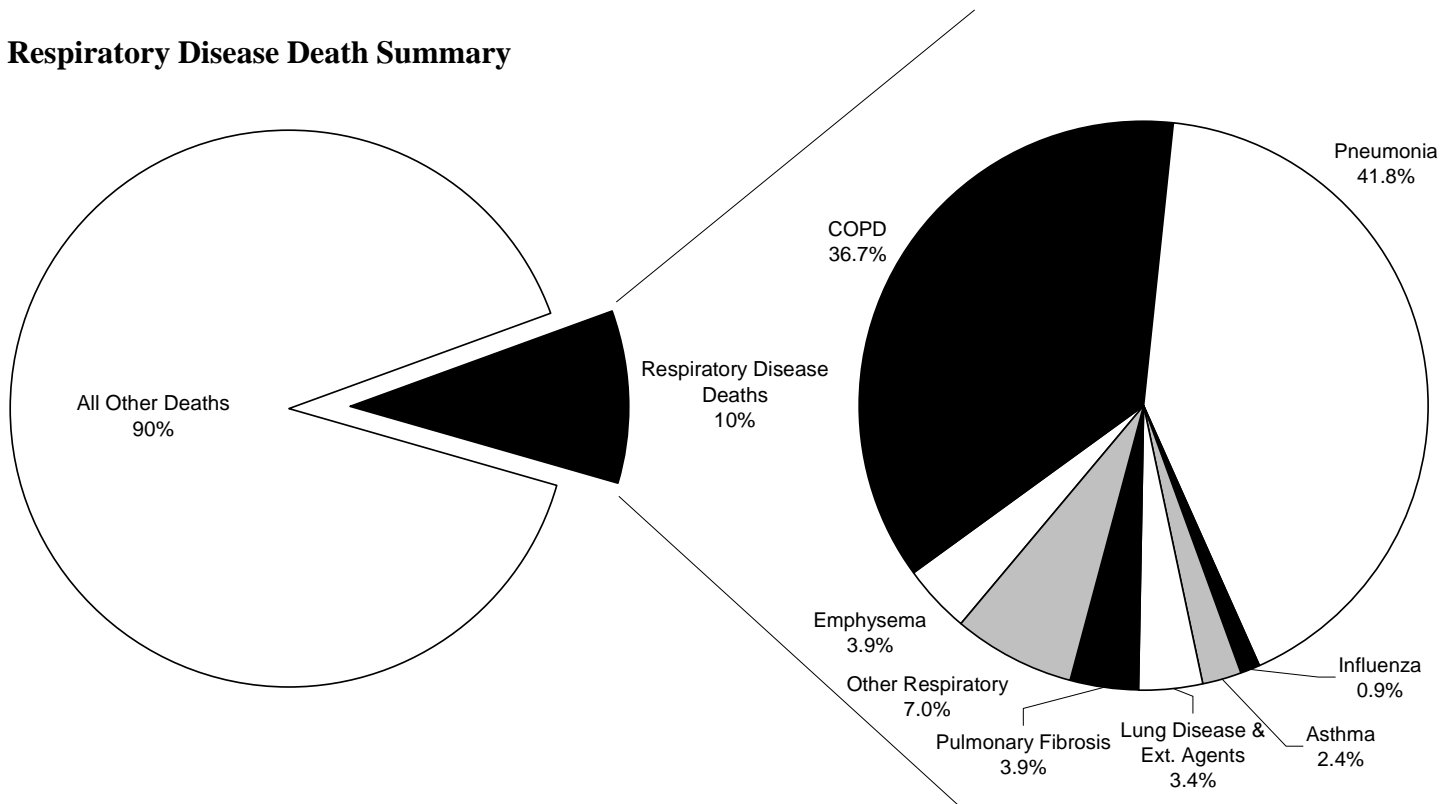


Table 7A

Other Selected Death Statistics  
by Local Health Area

October 1 - December 31, 2000

Year-End, 2000

Local Health Area	Diabetes	Alcohol Related	AIDS*	Other Infectious D.	Cerebro & Other Vasc.	Liver Disease	ALS/MS	Alzheimeris Disease	Parkinsonis Disease									
01 Fernie	1	1	2	7	-	-	-	1	1									
02 Cranbrook	1	4	6	19	-	-	-	2	3									
03 Kimberley	1	2	1	12	-	-	-	-	-									
04 Windermere	1	3	1	2	-	-	-	1	2									
05 Creston	1	5	1	10	-	-	-	1	2									
06/07 Kootenay Lake/Nelson	1	4	2	18	-	1	5	3	14									
09 Castlegar	1	4	5	12	-	-	1	6	11									
10 Arrow Lakes	1	1	3	5	-	-	1	5	-									
11 Trail	1	4	3	15	-	1	2	2	26									
12/13 Grand Forks/Kettle Valley	-	2	3	5	-	-	-	2	11									
14 Southern Okanagan	5	12	7	18	-	-	8	17	1									
15 Penticton	2	13	7	26	-	1	2	4	13									
16 Keremeos	1	2	1	6	-	-	-	2	4									
17 Princeton	2	3	2	9	-	-	1	3	-									
18 Golden	-	1	1	4	-	-	-	1	2									
19 Revelstoke	1	1	2	5	-	-	-	7	2									
20 Salmon Arm	1	9	4	14	-	-	2	10	34									
21 Armstrong-Spallumcheen	-	4	-	4	-	-	1	1	7									
22 Vernon	3	18	9	34	-	1	1	7	20									
23 Central Okanagan	5	26	18	72	-	1	1	11	32									
24 Kamloops	6	21	14	54	-	1	3	7	11									
25 100 Mile House	1	4	9	14	-	-	-	3	10									
26 North Thompson	-	-	1	5	-	-	-	3	5									
27 Cariboo-Chilcotin	2	4	3	15	-	1	1	6	14									
28 Quesnel	2	4	2	10	-	1	2	4	9									
29 Lillooet	1	2	3	12	-	-	1	2	6									
30 South Cariboo	-	-	-	2	-	-	-	1	1									
31 Merritt	1	4	4	12	-	1	2	2	9									
32 Hope	2	4	4	9	-	1	3	3	7									
33 Chilliwack	5	23	11	29	-	2	7	15	57									
34 Abbotsford	8	27	9	29	-	1	2	10	14									
35 Langley	5	19	7	26	-	1	4	22	81									
36 Surrey	10	59	28	100	-	7	6	20	67									
37 Delta	3	11	5	27	-	-	1	2	19									
38 Richmond	4	16	11	31	-	1	2	18	24									
40 New Westminster	5	17	11	33	-	5	5	10	18									
41 Burnaby	6	33	14	63	-	4	7	17	34									
42 Maple Ridge	4	9	8	31	-	1	1	4	12									
43 Coquitlam	5	18	16	51	-	1	2	7	30									
44 North Vancouver	5	27	10	45	-	3	-	3	33									
45 West Vancouver-Bowen Island	-	5	5	11	-	-	3	5	12									
46 Sunshine Coast	3	6	2	18	-	-	2	4	8									
47 Powell River	2	2	5	12	-	-	1	5	15									
48 Howe Sound	-	3	1	10	-	-	1	-	9									
49 Bella Coola Valley	-	-	-	-	-	-	-	2	-									
50 Queen Charlotte	-	-	2	4	-	-	-	3	1									
51 Snow Country	-	-	1	1	-	-	-	1	1									
52 Prince Rupert	1	1	4	18	-	-	1	1	3									
53 Upper Skeena	1	1	3	9	-	-	-	1	2									
54 Smithers	-	-	3	6	-	-	1	2	9									
55/93 Burns Lake/Eutsuk	-	1	1	5	-	-	-	1	2									
56 Nechako	1	5	4	10	-	-	1	5	11									
57 Prince George	3	14	10	35	-	-	6	10	39									
59 Peace River South	3	9	4	21	-	-	1	-	16									
60 Peace River North	-	2	2	6	-	-	-	1	9									
61 Greater Victoria	15	45	29	121	-	7	3	12	47									
62 Sooke	-	3	2	12	-	-	1	3	9									
63 Saanich	3	12	4	21	-	-	3	20	66									
64 Gulf Islands	-	3	1	5	-	-	1	4	17									
65 Cowichan	1	5	2	23	-	-	1	5	7									
66 Lake Cowichan	-	-	2	7	-	-	1	1	4									
67 Ladysmith	1	4	4	15	-	-	1	1	7									
68 Nanaimo	4	10	19	57	-	4	1	6	21									
69 Qualicum	3	10	7	16	-	1	2	7	12									
70 Alberni	-	4	6	19	-	3	1	5	7									
71 Courtenay	5	12	8	27	-	1	1	5	19									
72/84 Campbell River/Vancouver Isl. W.	1	7	11	37	-	2	1	3	5									
75 Mission	1	6	3	13	-	-	-	1	6									
76 Agassiz-Harrison	-	2	1	4	-	-	-	1	3									
77 Summerland	-	2	1	1	-	-	1	2	15									
78 Enderby	-	-	2	4	-	-	-	1	6									
80 Kitimat	-	1	-	2	-	-	-	1	6									
81 Fort Nelson	1	2	-	1	-	-	-	-	-									
83 Central Coast	-	-	-	2	-	-	1	-	1									
85 Vancouver Island North	1	2	4	14	-	1	-	2	3									
87/94 Stikine/Telegraph Creek	-	1	1	3	-	-	-	1	-									
88 Terrace	-	2	2	8	-	-	1	1	2									
92 Nisgaia	-	-	-	-	-	-	-	7	-									
161 Vancouver City Centre	4	16	15	50	-	29	4	10	13									
162 Vancouver Downtown East Side	4	10	19	62	-	22	1	9	9									
163 Vancouver North East	4	15	6	32	-	8	6	11	13									
164 Vancouver West Side	4	16	2	18	-	6	1	6	20									
165 Vancouver Midtown	3	13	2	25	-	6	-	8	14									
166 Vancouver South	4	16	7	34	-	2	3	9	19									
Unknown Vancouver	-	-	-	-	-	-	-	-	-									
Unknown	-	-	-	1	-	-	-	-	-									
<b>British Columbia</b>	<b>177</b>	<b>689</b>	<b>455</b>	<b>1,695</b>	<b>-</b>	<b>122</b>	<b>74</b>	<b>286</b>	<b>747</b>	<b>2,756</b>	<b>101</b>	<b>375</b>	<b>40</b>	<b>141</b>	<b>116</b>	<b>460</b>	<b>44</b>	<b>170</b>

Note: Refer to Glossary for definition of terms. Columns bolded and italicized represent year-end totals. \* AIDS deaths are not reported by LHA for a single quarter for reasons of confidentiality.

Table 7B

**Other Selected Death Statistics  
by Health Region**

October 1 - December 31, 2000  
Year-End, 2000

Health Region	Diabetes		Alcohol Related		AIDS		Other Infectious D.		Cerebro & Other Vasc.		Liver Disease		Alzheimerís Disease		Parkinsonís Disease			
1 East Kootenay	5	<b>16</b>	12	<b>54</b>	-	-	-	-	14	<b>46</b>	1	<b>12</b>	-	<b>3</b>	2	<b>9</b>	-	<b>1</b>
2 West Kootenay-Boundary	4	<b>15</b>	16	<b>55</b>	-	-	2	<b>9</b>	13	<b>67</b>	3	<b>8</b>	1	<b>1</b>	5	<b>21</b>	3	<b>9</b>
3 North Okanagan	5	<b>32</b>	17	<b>61</b>	-	<b>1</b>	1	<b>10</b>	32	<b>116</b>	4	<b>12</b>	2	<b>6</b>	7	<b>21</b>	3	<b>8</b>
4 South Okanagan-Similkameen	15	<b>58</b>	36	<b>132</b>	-	<b>2</b>	3	<b>17</b>	57	<b>203</b>	8	<b>25</b>	4	<b>10</b>	11	<b>54</b>	-	<b>10</b>
5 Thompson	8	<b>27</b>	22	<b>85</b>	-	<b>2</b>	3	<b>10</b>	19	<b>76</b>	6	<b>15</b>	2	<b>7</b>	4	<b>15</b>	1	<b>4</b>
6 Fraser Valley	16	<b>62</b>	28	<b>84</b>	-	<b>3</b>	5	<b>22</b>	39	<b>147</b>	7	<b>29</b>	-	<b>3</b>	7	<b>35</b>	3	<b>11</b>
7 South Fraser Valley	18	<b>89</b>	40	<b>153</b>	1	<b>7</b>	8	<b>26</b>	108	<b>352</b>	8	<b>35</b>	8	<b>18</b>	17	<b>47</b>	5	<b>13</b>
8 Simon Fraser	14	<b>44</b>	35	<b>115</b>	-	<b>7</b>	8	<b>21</b>	60	<b>184</b>	4	<b>18</b>	4	<b>12</b>	11	<b>41</b>	1	<b>6</b>
9 Coast Garibaldi	5	<b>11</b>	8	<b>40</b>	-	-	2	<b>6</b>	13	<b>47</b>	-	<b>7</b>	1	<b>6</b>	-	<b>2</b>	1	<b>3</b>
10 Central Vancouver Island	9	<b>33</b>	40	<b>137</b>	1	<b>8</b>	6	<b>25</b>	55	<b>187</b>	9	<b>29</b>	2	<b>14</b>	9	<b>28</b>	1	<b>12</b>
11 Upper Island/Central Coast	7	<b>21</b>	23	<b>80</b>	1	<b>4</b>	2	<b>11</b>	27	<b>70</b>	5	<b>14</b>	-	<b>4</b>	4	<b>16</b>	2	<b>4</b>
12 Cariboo	5	<b>12</b>	14	<b>39</b>	-	-	2	<b>3</b>	13	<b>35</b>	7	<b>16</b>	1	<b>2</b>	1	<b>4</b>	-	<b>2</b>
13 North West	2	<b>6</b>	16	<b>51</b>	-	-	1	<b>3</b>	9	<b>38</b>	7	<b>14</b>	-	-	-	<b>2</b>	-	-
14 Peace Liard	4	<b>13</b>	6	<b>28</b>	-	-	-	<b>1</b>	1	<b>25</b>	2	<b>6</b>	-	<b>4</b>	-	<b>4</b>	-	-
15 Northern Interior	4	<b>20</b>	15	<b>50</b>	-	-	-	<b>7</b>	16	<b>52</b>	6	<b>13</b>	-	<b>2</b>	3	<b>8</b>	-	<b>4</b>
16 Vancouver	23	<b>86</b>	51	<b>221</b>	20	<b>73</b>	15	<b>53</b>	88	<b>384</b>	8	<b>55</b>	6	<b>14</b>	12	<b>49</b>	11	<b>29</b>
17 Burnaby	6	<b>33</b>	14	<b>63</b>	1	<b>4</b>	7	<b>17</b>	34	<b>136</b>	2	<b>13</b>	2	<b>7</b>	1	<b>11</b>	-	<b>8</b>
18 North Shore	5	<b>32</b>	15	<b>56</b>	-	<b>3</b>	3	<b>8</b>	45	<b>152</b>	6	<b>18</b>	3	<b>8</b>	4	<b>17</b>	2	<b>2</b>
19 Richmond	4	<b>16</b>	11	<b>31</b>	-	<b>1</b>	2	<b>18</b>	24	<b>87</b>	1	<b>5</b>	2	<b>6</b>	2	<b>16</b>	2	<b>8</b>
20 Capital	18	<b>63</b>	36	<b>159</b>	1	<b>7</b>	4	<b>19</b>	80	<b>352</b>	7	<b>31</b>	2	<b>14</b>	16	<b>60</b>	9	<b>36</b>
Unknown	-	-	-	<b>1</b>	-	-	-	-	-	-	-	-	-	-	-	-	-	-
<b>British Columbia</b>	177	<b>689</b>	455	<b>1,695</b>	25	<b>122</b>	74	<b>286</b>	747	<b>2,756</b>	101	<b>375</b>	40	<b>141</b>	116	<b>460</b>	44	<b>170</b>

Note: Refer to Glossary for definition of terms.

Columns that are bolded and italicized represent year-end totals.



# The impact of ICD-10 (in year 2000) on identifying, classifying, coding and UCOD selecting neoplasm(s) on death records

by J. Macdonald & R. Armour

Since 1979, all disease/circumstance entities on death records have been classified using the 9th revision of the International Classification of Diseases (ICD-9). Beginning in the year 2000, the BC Vital Statistics Agency (BCVSA), like other Canadian provincial jurisdictions dealing with mortality data, began using ICD-10. Implementation of the new classification system included replacement with ICD-10 based software – MICAR (in use since 1995) for automated assignment of codes and ACME (in use since 1990) for application of the rules to select the single underlying cause of death (UCOD).

Because of classification differences in ICD-10 as well as in the rules that govern what and how cancer codes are applied and selected, there are several changes. If implemented without modification, these will have a major impact on consistency and accuracy of cancer mortality data - both UCOD and multiple codes. The various issues discussed here were initially identified by Vital Statistics coding and research staff following ICD-10 Multiple Code Training in Ottawa. These were subsequently confirmed through examination of National Center for Health Statistics (NCHS) literature and manuals, W.H.O rules and ICD-10 codes, by preliminary testing of software and via a survey of physicians to determine if application of the new rules accurately reflected certifier intent. The BC Cancer Agency was apprised of BCVSA concerns through early issue paper drafts and was involved in discussions about the course of action taken by this Agency.

## Differences in ICD-10 neoplasm codes and/or how they are applied:

1. Mesothelioma: (C450 – C459) now has a specific code group. Previously, if the site was identified (e.g. pleura, peritoneum) this cancer was counted with others of the specified site; if not site-specific this cancer was included with primary site unknown (1991).
2. Kaposi's sarcoma: (C460 – C469) now has a specific code group. Previously, this went to specified/ unspecified site of skin (1730-1739). Multiple code analysis for Kaposi's is adversely affected by the fact that, when due to AIDS, the code for Kaposi's is apparently dropped for a "Kaposi's resulting from HIV disease" specific code (B210).
3. HIV and other cancers: As with Kaposi's, codes for Burkitt's lymphoma, non-Hodgkins lymphoma, and unspecified cancer, are dropped in favor of equivalent "resulting from HIV disease" codes. What is more problematic, is that other HIV/cancer codes are less specific (e.g. HIV resulting in other malignant neoplasms [B218] or in multiple malignant neoplasms [B217]) resulting in the loss of non-UCOD, cancer specific, information.
4. Breast cancer: (C500 – C509) ICD-10 codes for breast cancer are not gender specific.
5. There is no differentiation between cancers with primary site unknown (ICD-9, 1991) and generalized cancer or carcinomatosis (ICD-9, 1990). These are all coded to C80 in ICD-10.
6. Some conditions/diseases were not previously considered to be neoplastic. Additions to the neoplasms category include – Waldenstrom's macroglobulinemia, alpha heavy chain disease, Franklin's disease (gamma heavy chain), Mediterranean disease, immunoproliferative disease NOS, all go to C88\_ (malignant immunoproliferative diseases). Light chain disease (American addendum) is now included with multiple myeloma. Myelofibrosis and panmyelosis, if acute are coded as leukemias (C944 & C955). There are also apparent changes involving conditions being reclassified based on changing views of cancer activity. For example, a cancer previously considered to be of "uncertain behaviour" might now be considered to be malignant, or conditions previously classified in other chapters such as monoclonal gammopathy or chronic myeloproliferative disease are now being classified as neoplasms of uncertain behaviour.
7. Infrequently, "unknown etiology" or "unknown source," whether referring to cancer or not, may not always be appropriately assigned by the MICAR software resulting in an inappropriate C80 code or other cancer code where there is no cancer.

8. “Malignant neoplasms of independent (primary) multiple sites” (C97): The rules for applying this ICD-10 code which had no equivalent in ICD-9 are noted below (2). The code C97 will be applied as UCOD on records with two or more rule-determined primary sites.
9. Melanoma: Morphology is disregarded for certain specified sites of malignant melanoma that have been classified in ICD-10 to cancer of the site rather than within melanoma subcategories. These include malignant melanomas of the eye, anus, and male and female external genitalia.

### **The effect of the application of NCHS/WHO new rules for classification of ICD-10 neoplasm categories:**

In addition to the impact on neoplasm statistics as a result of the move to ICD-10 in the year 2000, many of which are noted above, there are significant differences (multiple code and UCOD) due to classification rule changes. These rules are provided in NCHS Instruction Manual Part 2b, (reference for all rules noted below). The ICD-10 rules for cancer coding disregard “due to” positioning and duration, allow secondary cancers as underlying cause of death (UCOD), make no distinction among multiple possible primary sites and attempt to assume the intent of certifiers based upon a list of “common” secondary cancer sites and/or combinations of anatomical systems. The Instruction Manual has been subject to amendment since its initial use in January 2000 therefore page reference numbers may no longer correspond to those provided. Coding and selection rules for neoplasms have had only minor changes that do not alter the original intent or approach. Those of greatest concern are noted below.

1. Neoplasms stated to be secondary (p. 128): If secondary cancer is the only cancer noted on the death record and there is no morphology to suggest a primary, no code for “unknown primary” is to be added. This will result, for the first time ever, in deaths with UCOD of secondary cancer.
2. Independent (primary) sites (p. 132): If two or more sites are mentioned in Part I of the death record without indication that any are primary or secondary, and none are on the list of “common sites of metastases” (see 3 below), each site is to be coded as a primary site. A neoplasm in a “due to” position is not to be used to determine secondary and primary. Likewise, information describing the interval between the onset of the cancers and the death are not to be considered. In

the case of two valid primary sites, there are no criteria (medical or positional) for selecting one of the cancers as UCOD.

#### **EXAMPLE:**

- I a) cancer of esophagus [3 months duration]  
 Due to, or as a consequence of  
 b) cancer of the stomach [8 months duration]

Result by rule: coded to primary malignant neoplasm of each site mentioned (C159 and C169) since neither is listed (see 3. below) as a common site of metastases and the underlying cause of death is C97 (multiple primary site neoplasms). Previously, based on position and duration, the esophageal cancer would have been coded as secondary to the underlying cause of death of primary stomach cancer.

3. Metastases and multiple sites (pp. 135-140): WHO/NCHS have identified certain sites as more commonly secondary than others. These “common sites of metastases” include bone, brain, central nervous system, diaphragm, heart, liver, lung not including bronchus [with qualification], lymph nodes, mediastinum, meninges, peritoneum, pleura, retroperitoneum, spinal cord, and ill-defined sites classifiable to C76.

Because the lung is considered to be a common site for both metastases and primary malignant neoplasms, there are special instructions within the rules. Cancer of the lung (excluding of bronchus or bronchogenic which is always primary) is coded as secondary if accompanied by site(s) not on the list and as primary when noted with sites on the list.

With the exception of lymph nodes that are always assumed to be secondary, if any one of these “common secondary” sites is the only cancer mentioned, it is coded as primary. Two unqualified sites not on the list are both coded as primary while two on the list (excluding lung) are both coded as secondary and no “primary site unknown” code is generated.

An exception to coding the “common” secondary sites (other than lung as secondary), is when a malignant neoplasm of lymphatic, hematopoietic, or related tissue (C81-C96) is noted in Part II in which case, the “common” secondary site is coded as primary (p. 139). This means, for example, that cancer of the brain is secondary if accompanied by lymphoma in Part I and primary if the lymphoma is noted in Part II.

## EXAMPLE:

- I a) cancer of abdomen [3 months duration]  
 Due to, or as a consequence of  
 b) cancer of the liver [8 months duration]

Result by rule: Both sites are coded to secondary neoplasms (abdomen is one of the “ill-defined” sites in C76\_ category included in “the list”) – C798 and C787 respectively. Because both secondary sites are in Part I of the Death Certification, the UCOD is C80 (multiple secondary sites). If the sites had been divided between Part I and Part II, the secondary site in Part I becomes the UCOD. A code for “primary site unknown” of C80 would only appear as UCOD if so noted on the record. Previously, primary liver cancer would have been the UCOD with metastases in the abdomen.

4. Metastatic ..., metastatic of ... (p.140): As noted in Instruction Manual 2b, the adjective “metastatic” could sometimes mean a secondary neoplasm from a primary elsewhere and sometimes denote a primary that has given rise to metastases. NCHS/WHO have attempted to establish the intent of the physician who uses this adjective on death certifications by applying the rules governing the use of the “list of common sites” and disregarding the term “metastatic.” That is, unless specified as primary or secondary or morphologically site-defined as not C80, all cancers are to be considered in terms of the list of “common” secondary sites, including the exceptions for lung cancer. This means, for example, a single entry of “cancer of brain” would be coded C719 (primary) and “metastatic cancer of brain” would be C793 (secondary). Exception is also to be made for metastatic mesothelioma or Kaposi’s sarcoma (p. 147). Where the site is not specifically indexed, it is coded as mesothelioma or Kaposi’s of “specified site NEC” if the reported site is not on the “common secondary” list. If the site is not indexed and is a “common” secondary site, it is double coded with unspecified site of mesothelioma/Kaposi’s (first entry) and secondary cancer of the site. This assumption about the intent of certifying physicians means that, for example “metastatic Kaposi’s of brain (on the “list”) would be coded C469 (unspecified site of Kaposi’s) & C793 (secondary of brain) while Kaposi’s sarcoma of brain would be C467.
5. More than one malignant neoplasm described as metastatic (pp.149-153): Differentiation of which “metastatic” sites are secondary and which are primary when more than one are described on a single death

record, becomes even more problematic (and more arbitrary). In this case, not only must the list of “common secondary sites be considered but the anatomical system sites (list, p.149), and the morphological types of the described “metastatic” cancers must also be considered. It should also be noted that the breast does not apparently belong in any anatomical system. Rules governing this situation are:

- If two or more “metastatic” sites are not on the “common” secondary list and are in different anatomical systems, each is coded as secondary. If sites are in the same anatomical system, each is coded as primary.

## EXAMPLE:

- A: I a) metastatic carcinoma of stomach  
 Due to, or as a consequence of  
 b) metastatic carcinoma of breast

and

- B: I a) metastatic pancreatic carcinoma  
 Due to, or as a consequence of  
 b) metastatic carcinoma of stomach

By the ICD-10 rules, cancer of the stomach and of the breast (Example A) would each be coded as secondaries (C788 and C798 respectively) since stomach and breast are in two different anatomical systems. The UCOD would be C80 (carcinomatosis/unknown primary). Formerly, the UCOD would have been gender appropriate breast cancer. In Example B, cancers of pancreas and stomach would each be coded as primary (C259 and C169) since they are of the same organ system, the same morphologically, and neither is on the list of “common sites of metastases”. The UCOD would be C97 (multiple primary site cancer) where formerly it would have been stomach cancer.

- If two or more “metastatic” morphological types are described, code each to primary.
- If the record notes a morphology implying site and an independent anatomical system site, both described as “metastatic”, code secondary of each site. In the example provided below, the term “metastatic” is assumed to apply to all sites following that are on the same line or joined by the word “and”.

## EXAMPLE:

- I a) metastatic colonic and  
Due to, or as a consequence of  
b) renal cell carcinoma

By ICD-10 based rule, both sites are coded as secondary (C785 and C790) with a UCOD of C80. Formerly, both colon and kidney would have been coded as independent primaries and UCOD would have been cancer of colon.

- If there is a combination of “metastatic” site(s) and one site that is unqualified or not on the list of “common” secondaries, code to primary neoplasm of the site that is not described as “metastatic”, irrespective of the order of entry or whether it is in Part I or Part II of the record. Code all other “metastatic” cancers as secondary.
  - If all sites are qualified as metastatic **and/or** on the list of “common” secondary sites **including lung**, code to secondary malignant neoplasm of all reported sites (pp. 152-153). For example, metastatic stomach cancer (line a) “due to” lung cancer (line b) would result in secondary site codes for both as lung is on the common sites of metastases list and stomach is described as metastatic.
6. Effect of new pneumonia coding rules on cancer stats: when pneumonia is the last entry in Part 1 of the Death Certification, due to a change in the ICD-10 direct sequel rule for pneumonia (and influenza), many more conditions can be taken from Part II as direct consequences of pneumonia. Part II of a Death Certification is to record “Other significant conditions contributing to the death but not resulting in the underlying cause given in Part I.” ICD-9 based modification rules did require UCOD preference for some conditions noted in Part II under certain circumstances (e.g. AIDS, COPD sequenced to pneumonia). Especially as far as pneumonia is concerned, new rules (even after slight modification since initial release) result in a marked decline in pneumonia deaths. This selection of a UCOD other than pneumonia makes no consideration of qualifiers, or duration or order of Part II conditions (usually a list of chronic conditions) and disregards the opinion of the certifier. Thus, deaths counted as due to pneumonia in ICD-9 are now attributed to many other causes. Some of the most prominent causes include malignant neoplasms, cardiovascular diseases, Alzheimer’s, dementia, uncomplicated diabetes, malnutrition, chronic

lower respiratory diseases, and septicemia, and could cause an increase in these conditions being counted as UCOD.

**Intent of physician certifiers and BCVSA survey**

Many of the rules noted above were designed to universally assume the intent of certifiers in distinguishing primary versus secondary sites and in the use of the term “metastatic” as an adjective. In order to ascertain how well these rules reflected the intent of BC physicians, Vital Statistics initiated a survey of current certifiers. Except for the criteria that at least one cancer on a record was described as “metastatic” OR more than one unqualified site was noted, medical certifications included single and multiple cancer entries, and a variety of sites including those on the “common secondaries” list. No physician was queried more than once in order to obtain as diverse a sample as possible. In all, between January 2000 and February 2001, 115 physicians who had certified deaths where cancer was involved, were contacted in writing. A letter explaining the purpose of the survey, and a copy of the relevant death certification were either faxed or mailed to the physician. Certifiers were asked to verify the intent of their documentation in order to clarify discrepancies between “system” and “coder” interpretation of cancer-related mortality certification. Of the 115 physicians surveyed, 111 responded.

The results of this survey indicated that *within the survey sample*, automated application of the coding rules resulted in a 75% error rate in the automated coding of cancer-related deaths. Of the 111 responses, 27 were coded correctly, and 84 incorrectly.

The errors in coding fell generally into four categories:

- 1) Coding of sites included in “common sites of metastases” list:

## EXAMPLE:

- I a) cardiac failure [days]  
Due to, or as a consequence of  
b) lymphangitic carcinomatosis [weeks]  
Due to, or as consequence of  
c) adenocarcinoma of lungs [2 months]

Automated coding result: lymphangitic carcinomatosis coded to C499 (primary connective tissue malignant neoplasm); adenocarcinoma of lungs coded to secondary lung cancer, with UCOD assignment of

connective tissue malignant neoplasm, unspecified. It appears that the UCOD selection was based solely on the fact that lung cancer is included in the list of “common sites of metastases”, with placement on the certificate and duration not having been taken into consideration. The most often correctly coded “common site of metastases” was metastatic liver cancer. Of the 27 correctly coded records within the survey, 12 involved secondary liver cancers.

- 2) Interpretation of the term “metastatic” (i.e. could be interpreted either as metastatic to, and therefore a secondary site, or as metastatic from and therefore a primary site):

EXAMPLE:

- I a) respiratory failure  
Due to, or as a consequence of  
b) metastatic cancer of grade III papillary ovarian cancer and inflammatory breast cancer

Automated coding result: both sites were coded to secondary cancers, with UCOD selection of unknown primary cancer (C80).

- 3) Duration inconsistencies:

EXAMPLE:

- I a) carcinoma of pancreas [6 month duration]  
Due to, or as a consequence of  
b) carcinoma of lung [1year duration]

Automated coding result: pancreatic carcinoma was coded as primary site and lung carcinoma was coded as secondary site, with UCOD selection of carcinoma of pancreas. Despite the fact that the lung cancer was the site of longer duration, it was coded as being secondary spread from the pancreatic cancer, durations having been ignored.

- 4) Morphology inconsistencies:

EXAMPLE:

- I a) metastatic ovarian adenocarcinoma  
  
II papillary carcinoma of thyroid

Automated coding result: secondary ovarian adenocarcinoma from primary papillary thyroid cancer, with UCOD assignment of thyroid cancer. Two distinct morphologies were apparently erroneously linked.

### Summary effect on cancer codes/statistics due to ICD-10 code classification and UCOD selection rule changes

- Slight decline in cancers of pleura, peritoneum and unspecified primary due to reassignment of mesothelioma. This is unavoidable and would require recoding of historical events to reconcile over time.
- Slight increase in immunoproliferative malignancy, multiple myeloma, and leukemia (also unavoidable – as above).
- Counts of Kaposi’s sarcoma and other cancers resulting from HIV disease used in multiple code analysis will have to be identified through HIV codes and included with the appropriate non-HIV cancer code. In some cases, detail relating to the cancer will be lost.
- Breast cancer counts derived by code will include a few male cancers.
- Not all melanoma will be counted within the morphological category.
- Carcinomatosis and multiple metastases (used in multiple code analyses) will no longer be available.
- Every UCOD code C97 is one less specified primary site cancer counted for statistical purposes – affects all records with more than one primary listed.
- There will be an apparent statistical decline in several primary cancers, especially of brain, liver, lung and peritoneum.
- In BC, physicians have been encouraged both in Instruction Handbooks and directly, to provide multiple site information (primary and secondary). It has also been our experience that use of the term “metastatic” as an adjective modifier of a primary cancer is a common practice here and not generally used in agreement with WHO/NCHS. There also appears to be a discrepancy in how commonly certain sites are secondary. Initial evaluation indicates that of all records containing the adjective “metastatic” or which provide more than one unqualified site, within B.C. the majority will not receive codes that reflect the intent of the certifier and will generally result in undercounting of a cross section of primary site cancers.

**Year 2000 counts by 3 digit code of deaths due to Malignant Neoplasm, C00-C97  
Comparison of edited and unedited results**

ICD	Description	Unedited Count	Edited Count	Edited plus/minus
C00	Malignant neoplasm of lip	1	2	+1
C02	Malignant neoplasm of other and unspecified parts of tongue	30	33	+3
C03	Malignant neoplasm of gum	2	2	
C04	Malignant neoplasm of floor of mouth	1	1	
C05	Malignant neoplasm of palate	2	2	
C06	Malignant neoplasm of other and unspecified parts of mouth	16	17	+1
C07	Malignant neoplasm of parotid gland	5	5	
C08	Malignant neoplasm of other and unspecified major salivary glands	3	3	
C09	Malignant neoplasm of tonsil	7	6	-1
C10	Malignant neoplasm of oropharynx	4	4	
C11	Malignant neoplasm of nasopharynx	15	18	+3
C12	Malignant neoplasm of pyriform sinus	1	1	
C13	Malignant neoplasm of hypopharynx	2	3	+1
C14	Malignant neoplasm of other and ill-defined sites in the lip, oral cavity and pharynx	18	19	+1
C15	Malignant neoplasm of oesophagus	199	199	
C16	Malignant neoplasm of stomach	222	226	+4
C17	Malignant neoplasm of small intestine	9	10	+1
C18	Malignant neoplasm of colon	595	609	+14
C19	Malignant neoplasm of rectosigmoid junction	19	22	+3
C20	Malignant neoplasm of rectum	112	110	-2
C21	Malignant neoplasm of anus and anal canal	3	3	
C22	Malignant neoplasm of liver and intrahepatic bile ducts	160	174	+14
C23	Malignant neoplasm of gallbladder	29	30	+1
C24	Malignant neoplasm of other and unspecified parts of biliary tract	33	36	+3
C25	Malignant neoplasm of pancreas	414	417	+3
C26	Malignant neoplasm of other and ill-defined digestive organs	217	225	+8
C31	Malignant neoplasm of accessory sinuses	6	6	
C32	Malignant neoplasm of larynx	50	51	+1
C33	Malignant neoplasm of trachea	1	1	
C34	Malignant neoplasm of bronchus and lung	1,890	1,956	+66
C38	Malignant neoplasm of heart, mediastinum and pleura	2	3	+1
C40	Malignant neoplasm of bone and articular cartilage of limbs	0	1	+1
C41	Malignant neoplasm of bone and articular cartilage of other and unspecified sites	18	23	+5
C43	Malignant neoplasm of malignant melanoma of skin	91	101	+10
C44	Other malignant neoplasms of skin	23	31	+8
C45	Mesothelioma	47	48	+1
C46	Kaposi's sarcoma	1	1	
C47	Malignant neoplasm of peripheral nerves and autonomic nervous system	1	1	
C48	Malignant neoplasm of retroperitoneum and peritoneum	10	14	+4
C49	Malignant neoplasm of other connective and soft tissue	31	31	
C500-C509	Malignant neoplasm of [female] breast, unspecified	554	552	-2

**Year 2000 counts by 3 digit code of deaths due to Malignant Neoplasm, C00-C97  
Comparison of edited and unedited results (continued)**

ICD	Description	Unedited Count	Edited Count	Edited plus/minus
C5091	Malignant neoplasm of male breast	0	2	+2
C51	Malignant neoplasm of vulva	15	14	+1
C52	Malignant neoplasm of vagina	6	6	
C53	Malignant neoplasm of cervix uteri	48	50	+2
C54	Malignant neoplasm of corpus uteri	42	44	+2
C55	Malignant neoplasm of uterus, part unspecified	24	25	+1
C56	Malignant neoplasm of ovary	213	218	+5
C57	Malignant neoplasm of other and unspecified female genital organs	2	2	
C58	Malignant neoplasm of placenta	1	1	
C60	Malignant neoplasm of penis	3	3	
C61	Malignant neoplasm of prostate	464	474	+10
C62	Malignant neoplasm of testis	0	1	+1
C64	Malignant neoplasm of kidney, except renal pelvis	148	147	-1
C66	Malignant neoplasm of ureter	5	6	+1
C67	Malignant neoplasm of bladder	177	179	+2
C68	Malignant neoplasm of other and unspecified urinary organs	3	4	+1
C69	Malignant neoplasm of eye and adnexa	3	1	+2
C70	Malignant neoplasm of meninges	1	1	
C71	Malignant neoplasm of brain	159	160	+1
C72	Malignant neoplasm of spinal cord, cranial nerves and other parts of central nervous system	1	1	
C73	Malignant neoplasm of thyroid gland	25	27	+2
C74	Malignant neoplasm of adrenal gland	9	10	+1
C75	Malignant neoplasm of other endocrine glands and related structures	3	3	
C76	Malignant neoplasm of other and ill-defined sites	42	45	+3
C77	Secondary and unspecified malignant neoplasm of lymph nodes	2	0	-2
C78	Secondary malignant neoplasms of respiratory and digestive organs	39	0	-39
C79	Secondary malignant neoplasm of other site	29	0	-29
C80	Malignant neoplasm - primary site unknown	404	390	-14
C81	Hodgkin's disease	13	14	+1
C82	Follicular [nodular] non-Hodgkin's lymphoma	4	4	
C83	Diffuse non-Hodgkin's lymphoma	35	35	
C84	Peripheral and cutaneous T-cell lymphomas	16	16	
C85	Other and unspecified types of non-Hodgkin's lymphoma	271	276	+5
C88	Malignant immunoproliferative diseases	5	7	+2
C90	Multiple myeloma and malignant plasma cell neoplasms	133	136	+3
C91	Lymphoid leukaemia	78	78	
C92	Myeloid leukaemia	101	106	+4
C93	Monocytic leukaemia	4	4	
C94	Other leukaemias of specified cell type	1	1	
C95	Leukaemia of unspecified cell type	53	57	+4
C96	Other and unspecified malignant neoplasms of lymphoid, haematopoietic and related tissue	1	1	
C97	Malignant neoplasms of independent (primary) multiple sites	65	0	-65
	<b>Total</b>	<b>7,492</b>	<b>7,546</b>	<b>+54</b>

Note: Counts may not correspond exactly to other published year 2000 data due to different run dates.  
In addition, there may be a slight discrepancy in run time between edited and unedited file creation.

## The British Columbia Vital Statistics Agency approach

BC Vital Statistics has written extensive edits to identify these and other (e.g. pneumonia as non UCOD) concerns. Among edits for more than 90 other “second look” issues there is a set designed to flag for review, many of the cancer deaths (for all codes, not just UCOD) discussed here. The edit lists are produced from ACME output. All unedited loads are stored in our system and all changes are made directly into the BCVSA operating system (VISION). This edit process occurs daily while original records are available for review.

In addition to a routine edit for gender appropriateness, the “cancer edit” includes all “primary unknown/ carcinomatosis” – C80 to confirm and to differentiate and add VS code C801 for carcinomatosis; C97 “multiple primary sites” for UCOD reassignment; any record with any secondary cancer codes are subject to review. Records missing codes for “unknown primary” have that code added. Also, all deaths with any code for cancer due to HIV disease are identified and double coded for improved multiple code use. For possible code reassignment to melanoma of eye (VS code C331), anus (C435), and male or female external genitalia (C439), ICD-10 codes C699, C210, C519, C600, C609, C632 are included in the edit process. Direct contact with certifying physicians continues where clarification is required.

In order to best meet research needs both nationally, provincially, and regionally, the Vital Statistics Agency maintains two databases – one with stored unedited output and one with corrected/edited codes stored against the registered death event. This means that statistics produced in BC for BC more accurately reflects certifiers’ intent and past practices that are more comparable to ICD-9 years but will not correspond to national statistics. In BC, users will have an option. Statistics and research conducted by this Agency and by most of our users will likely be derived from edited data.

The table on pages 26-27 provides counts of year 2000 deaths due to malignant neoplasms for unedited and edited data. As demonstrated, edited data contains gains in the majority of site specific causes – most notably for cancers of the lung, colon, and liver and for melanoma and other

neoplasms of skin. Much of the gain is reflected in the reassignment of codes from secondary cancers and neoplasms of multiple primary sites. In addition, edits for issues other than cancer have resulted in reassignment of UCOD to cancer. For example an edit for aspiration/ pneumonia could result in reassignment of the UCOD to the debilitating condition (e.g. cancer) or circumstance that led to the aspiration. For this reason there were 54 more cancer deaths reported in the edited data.

In addition to a daily edit and review of software output, the BC Vital Statistics Agency has undertaken development of rules and procedures that will allow the production of consistent causes of death statistics that span ICD-9 and ICD-10 (back to 1986). This process involves four strategies. Three of these strategies involve mapping; “dummy down” of ICD-10; mapping of single ICD-9 codes to single ICD-10 codes where a one to one relationship could be established; mapping of combinations of ICD-9 codes (using multiple codes/ factors) to a single or preferred (“dummied down”) ICD-10. These three strategies resulted in the creation of over 11,000 mapping rules. When the disease(s) in an ICD-9 code could not be sufficiently differentiated to assign to ICD-10 (e.g. mesotheliomas of various sites) or where improved detail is desirable (e.g. identification of hepatitis C) from historical data, original records are being retrieved and recoded. ICD-9 codes are not actually replaced as ICD-10 recodes of historical data (1986 to 1999) are stored separately in the operational system. The separate storage of ICD-10 recodes allows for flexibility, documentation and verification of recode decisions. The recode process involves many thousands of records and is at approximately 95% completion at this time.

Some of the issues around ICD-10 based cancer mortality identified here have also been noted in several other provinces and countries and there is general concern about the integrity and accuracy of cancer statistics. Use of provincial Vital Statistics data is more extensive in BC than in any other jurisdiction and a need to find a compromise among the needs for consistency, comparability and accuracy while still meeting national requirements is the rationale behind the approach we have taken.

# Glossary

**Alcohol-Related:** This category includes all deaths considered as being directly or indirectly related to alcohol as indicated by inclusion by the certifier of selected alcohol identifying conditions anywhere on the death record (including “lifestyle” field). It should be noted that where alcohol is an indirect cause of death (i.e. not UCOD) and the direct underlying cause of death falls within one of our selected causes (e.g. motor vehicle accidents), then this death may be counted in both columns. That is, not all of “alcohol-related” are exclusive. This category includes the ICD-10 codes: F100-F109, K700-K709, O993, P043, O354, Q860, G312, G621, G721, I426, K292, K860, X45, X65, T510-T512, T519. **Note:** now excludes acute pancreatitis, and cirrhosis not specifically identified as alcohol induced.

**Assignment of Health Region:** Cases are assigned to Health Regions by the aggregation of appropriate LHAs.

**Assignment of Local Health Area (LHA):** Allocation of LHA, in the case of births and deaths is based upon the usual residence (by postal code) of the mother and deceased respectively. Marriages are assigned to LHAs according to the place of the event. Community name is used in the absence of postal code.

**Elderly Gravida:** Any mother who was 35 years of age or older at the time of delivery of a live born infant.

**External Causes of Death:** Deaths due to environmental events, circumstances and conditions as the cause of injury, poisoning, and other adverse effects. Broad categories include accidents, suicide, medical or abnormal reactions (considered accidents), homicide, legal intervention, misadventures (counted as accident) and injury from war operations. Standard “Quarterly” tables under this heading include deaths due to accidents, suicide, homicide, and other. Accidents are subdivided by the following categories; motor vehicle accidents (MVA) (ICD-10 V020-V049, V090-V092, V093, V120-V149, V190-V196, V200-V249, V260-V349, V360-V449, V460-V549, V560-V649, V660-V749, V760-V799, V803-V805, V820-V821, V823-V839, V840-V875, V877-V8999, Y850), poisoning (X40-X49), falls (W00-W19), burns/fire (X00-X19), drowning (V900-V909, V920-V929, W65-W74), other accidents (V010-V019, V050-V069, V091, V099, V100-V119, V150-V189, V198-V199, V250-V259, V350-V359, V450-V459, V550-V559, V650-V659, V750-V759, V800-V802, V806-V819, V822, V876, V910-V919, V930-V949, V950-V978, V98-V99, W20-W64, W75-W99, X20-X39, X50-X59, Y40-Y849, Y859, Y86, Y880-Y883). Suicide ICD-10 codes are X60-X84, Y870; homicide (X85-Y09, Y871); “other [external]” consists of events of undetermined intent, legal interventions, and operations of war (Y10-Y369, Y890-Y899).

**Note:** the late effects of accidental poisoning, falls, and burns/fire are no longer identified separately for inclusion in these categories and are now part of “other accidents”). Trains are now considered motor vehicles in ICD-10 but for consistency, have been excluded from MVA counts to still be considered as “other transport”.

**Heart Disease:** Tables under this heading include deaths due to:

- rheumatic/valvular: (I050-I099, I340-I38)
- hypertension/hypertensive: (I10-I159)
- ischemic: (I200-I259) (**Note:** now includes cardiomyopathy specified as ischemic)
- conductive and dysrhythmic: (I440-I499)
- heart failure: (I500-I509)
- congenital: (Q200-Q249)
- other: pulmonary (I260-I289), inflammatory (I300-I339, I400-I409), cardiomyopathy (I420-I429) (**Note:** now excludes ischemic), other ill-defined or unspecified heart disease (I510-I519) (includes myocardial degeneration)

**ICD-9:** The ninth revision of *International Classification of Diseases*, World Health Organization, Geneva, 1977. An internationally used system of approximately 12,000 four (and some three) digit numbers representing a system of categories to which morbid entities are assigned according to an established criteria. ICD provides a common basis of disease and injury classification that facilitates storage, retrieval, and tabulation of statistical data.

**ICD-10:** The tenth revision of *International Classification of Diseases and Related Health Problems*, World Health Organization, 1992. In use beginning with year 2000, update of ICD-9 revised with alpha-numeric system and increased code detail (approximately 18,000). The BC Vital Statistics Agency and all their provincial counterparts utilize an ICD-10 that has been modified by the National Center for Health Statistics (NCHS) for use in the classification and analysis of medical mortality data in the United States (October, 1998).

**Infant Deaths:** Deaths of children under one year of age.

**Live birth:** The complete expulsion or extraction from its mother, irrespective of the duration of the pregnancy, of a product of conception in which, after the expulsion or extraction, there is:

- (a) breathing;
- (b) beating of the heart;
- (c) pulsation of the umbilical cord; or
- (d) unmistakable movement of voluntary muscle, whether or not the umbilical cord has been cut or the placenta attached.

**Low Birth Weight:** Any live born infant weighing less than 2500 grams.

**Neoplasms:** (ICD-10 C000-D489). Although the vast majority of deaths in this category are due to malignant cancer, also included are benign, in-situ, and unspecified "tumors". Detailed ICD-10 breakdown used in "Neoplasm Deaths" tables are:

- lung: includes trachea, bronchus, lung, and pleura (C33, C340-C349, C384, C450). **Note:** now excludes mesothelioma of lung and trachea.
- female breast: (C500-C509)
- colorectal: (C180-C218)
- other G.I.: includes esophagus, stomach, small intestine and duodenum, liver and intrahepatic bile ducts, gallbladder and extrahepatic ducts, pancreas, peritoneum, other and ill-defined within digestive organs (C150-C179, C220-C269)
- female reproductive: includes uterus, cervix, placenta, ovary and adnexa, vagina and external genitalia (C510-C58)
- prostate: C61
- blood/lymph: includes lymphatic and haematopoietic tissue (C810-C969, C463)
- other malignancy: includes malignant neoplasms of other (e.g. lip, oral cavity, pharynx, nose ear, larynx, heart, bone and connective tissue, urinary tract, eye, brain, endocrine glands) and ill-defined or unspecified sites (C000-C148, C300-C449, C451-C462, C467-C499, C600-C609, C620-C768, C5099\*, C80\*). **Note:** \* codes used exclusively by BC Vital Statistics Agency for male breast cancer and for unknown primary site cancer.
- non malignant and unspecified: includes benign, in-situ, and neoplasms of uncertain or unknown behaviour (D000-D489). **Note:** This neoplasm group now includes myeloproliferative disease, thrombocythemia, monoclonal gammopathy, and lymphoproliferative disease which were not previously considered neoplastic in ICD-9 and were counted in other ICD chapters.

**Other Selected Death Statistics:** Tables under this heading include deaths due to:

- diabetes: (E100-E149)
- alcohol-related: (see previous page)
- AIDS/HIV: (B200-B24)
- other infectious and parasitic disease: (A000-B199, B250-B999) **Note:** Now includes obstetrical and neonatal tetanus.
- cerebro and other vascular disease: (I600-I698, I700-I879, I950-I959, I880-I899, I970-I979, I99). Includes cerebrovascular disease, disease of arteries and veins, hypotension, and other circulatory system disease. **Note:** "Other circulatory system disease" now includes post procedural disorders of the circulatory system (I970-I979) which are never selected as the UCOD. However they are confirmed by editing and either recoded to the more specific disease (embolism, stroke, M.I.) or double coded if the complication is confirmed.
- liver disease: (K700-K7699). **Note:** Now includes toxic liver disease with cholestasis.
- ALS/MS: Amyotrophic lateral sclerosis and multiple sclerosis: (G122, G1221, G35). **Note:** In order to maintain continuity with ICD-9, unspecified motor neuron disease (G122) is included in this category as it was previously not distinguishable from ALS.

**Premature/Pre-term:** Any live born infant less than 37 weeks gestation at delivery.

**Respiratory Disease Death Statistics:** Tables under this heading include deaths due to the following:

- emphysema: (J430-J439) **Note:** Now excludes when described as or resulting in obstructive disease –see note at COPD.
- COPD: (440-J449). **Note:** Now includes specific code within the group for COPD when accompanied with acute lower respiratory infection, or with acute exacerbation. This inclusion has no statistical impact on UCOD. Also, this category now includes asthma and emphysema described as obstructive not previously included in ICD-9.
- pneumonia: (J120-J181, J188-J189) **Note:** ICD-10 has a new code for chlamydial pneumonia (J160). It is uncertain if this condition would have previously been coded to “pneumonia due to other specified bacteria” (ICD-9 4828) or to “other diseases due to viruses and chlamydia” (0788), or to both. This disease is very rare on death records so if not coded to 4828, the impact to comparison of historical data would still be minimal. Daily VS edits have been implemented to ensure consistent selection of pneumonia.
- influenza: (J100-J118)
- asthma: (J450-J459, J46). **Note:** Now excludes when described as obstructive – see note at COPD.
- lung disease due to external agents: (J60-J709)
- pulmonary fibrosis: (J841)
- other respiratory diseases: (J00-J069, J182, J200-J42, J47, J80-J840, J848-J9899). **Note:** Now includes post procedural respiratory disorders (J950-J959) which formerly used to be injury codes. These codes are never selected as the UCOD so their impact would only effect multiple code analyses. The Vital Statistics Agency includes these in daily data edits to confirm them as post procedural and to double code for the specific respiratory condition (e.g. pneumonia). As a result, respiratory disease statistics in BC are more consistent with historical data.

**Stillbirth:** The complete expulsion or extraction from its mother after at least twenty weeks of pregnancy or after attaining a weight of at least 500 grams, of a product of conception in which, after expulsion or extraction, there is no breathing, beating of the heart, pulsation of the umbilical cord, or unmistakable movement of voluntary muscle.

**Teenage Mother:** Any mother who was age 19 or less at the time of delivery.

**UCOD:** Underlying cause of death – based upon application of standard international coding rules and medical expertise for determining consequential relationships of conditions and diseases from immediate cause backwards to underlying cause.

# Index of *Quarterly Digest* Articles to date:

## Volume 1 - Number 1 & 2 - October 1991

1. Alcohol Related Deaths.
2. Status Indians in British Columbia, 1989 - A Vital Statistics Overview.

## Volume 1 - Number 3 - January 1992

1. Fatal Poisonings in British Columbia - 1989 - by J.M. Macdonald.
2. Fatal Head Injuries in British Columbia - 1990 - by J.M. Macdonald.

## Volume 1 - Number 4 - April 1992

1. Mortality Mapping in British Columbia - by M.C.R. Edgell & L.T. Foster.
2. Suicide Deaths in British Columbia, - by T.A. Tuk & J.M. Macdonald.
3. Selected Health Status Indicators in British Columbia, 1985-1990 - by K.F. Burr, L.T. Foster, & J.H. Mohamed.

## Volume 2 - Number 1 - July 1992

1. Charting Birth Weight of British Columbia Newborns: How do we compare? -by W.J. Kierans.
2. Cardiovascular Disease Death in British Columbia: Still number one - by J.M. Macdonald, T.A. Tuk & J.H. Mohamed .

## Volume 2 - Numbers 2 & 3 - November 1992

1. A Deadly Affair: Cigarette Smoking - Attributable Deaths, British Columbia, 1985 and 1989  
- by R.M. Strohmaier & W. Hu.
2. Health Status Registry: A Health Planning Tool Revisited and Revitalized - by W.J. Kierans & A.K. McBride.

## Volume 2 - Number 4 - February 1993

1. Recent Advances in Community Health Related Information: A Vital Statistics Perspective  
- by T.A. Tuk, M.A. Collison, L.T. Foster.
2. Cesarean Section Rates: A British Columbia Overview Prepared by Division of Vital Statistics.

## Volume 3 - Number 1 - May 1993

1. Cancer Mortality in British Columbia Part I: Cancer as an Underlying Cause of Death  
- by C. Cranfield, T.A. Tuk & J.M. Macdonald
2. Estimates for Health Effects Attributable to Second-Hand Smoke in British Columbia - by M.E. Thomson.

## Volume 3 - Number 2 - August 1993

1. Cancer Mortality in British Columbia Part II: Cancer Mortality Multiple Conditions  
- by J.M. Macdonald, T.A. Tuk & C. Cranfield.
2. Technical Notes - An Alternative Approach to Mapping Mortality: A Bayesian Procedure  
- by Ying C. MacNab.

## Volume 3 - Number 3 - November 1993

1. Injury Facts and Prevention Strategies for Children and Youth in British Columbia  
- by Office for Injury Prevention.
2. Ethnicity and Health Status, Part One: The IndoCanadian Community - by W.J. Kierans.
3. Technical Notes - Measurement of Mortality Part I: Crude Rate - by Ying C. MacNab & T.A. Tuk.

**Volume 3 - Number 4 - May 1994**

1. Ethnicity and Health Status, Part Two: The Chinese Immigrant Community - by W.J. Kierans.
2. Potential Years of life Lost: British Columbia, 1985-1992 - by R.M. Strohmaier.
3. Technical Notes - Measurement of Mortality Part II: Age Standardized Mortality Rate  
- by Ying Cai MacNab & T.A. Tuk.

**Volume 4 - Number 1 - June 1994**

1. Vital Statistics in British Columbia: An Historical Overview of 100 Years, 1891 to 1990 - by J.M. Macdonald.
2. Technical Notes: Measurement of Mortality Part III: Standardized Mortality Ratio  
- by Ying Cai MacNab & T.A. Tuk.

**Volume 4 - Number 2 - August 1994**

1. Status Indians in British Columbia: A statistical Overview [1987-1992] - prepared by Medical Services Branch of Health Canada and BC Division of Vital Statistics.

**Volume 4 - Number 3 - November 1994**

1. Drug-Related Deaths in British Columbia: 1981 to 1993 - by T.A. Tuk and J.M. Macdonald.

**Volume 4 - Number 4 - February 1995**

1. Sudden Infant Death Syndrome in British Columbia: 1981 to 1993 - by H. Amershi.

**Volume 5 - Number 1 - May 1995**

1. AIDS/HIV Related Mortality in British Columbia: 1985 to 1994 - by N. Fast.

**Volume 5 - Number 2 - August 1995**

1. Suicide, Homicide, and Gun Deaths, British Columbia, 1985 to 1993 - by T.A. Tuk & J. Macdonald.

**Volume 5 - Number 3 - November 1995**

1. Respiratory Disease Mortality in British Columbia, 1985 to 1994 - by Y.C. MacNab, J. Macdonald, T.A. Tuk.

**Volume 5 - Number 4 - March 1996**

1. Diabetes in Birth and Death: British Columbia, 1987 to 1994 - by K. Stenning.

**Volume 6 - Number 1 - July 1996**

1. Increased Maternal Age and the Outcome of Pregnancy: An eight year population based study, British Columbia, 1987 - 1994 - by Y.C. MacNab, J. Macdonald, T.A. Tuk.

**Volume 6 - Number 2 - October 1996**

1. Marriage and Family in British Columbia: 1931 - 1994 - by Z. Kashaninia.

**Volume 6 - Number 3 - January 1997**

1. Accident Fatality in British Columbia, 1987 - 1995 [Introductory chapter of in progress longer report]  
- by E. Demaere.

**Volume 6 - Number 4 - April 1997**

1. A Review of Delivery Mode in British Columbia, 1987 - 1995 - by Y.C. MacNab.

**Volume 7 - Number 1 - July 1997**

1. Pregnancy Outcomes in British Columbia, - by Cathy Hull.

**Volume 7 - Number 2 - October 1997**

1. Women and Cancer: Lung and breast cancer among women in BC, 1974-1996 -by Z. Kashaninia.

**Volume 7 - Number 3 - January 1998**

1. Women and Cancer (Part II): Ovarian, uterine and cervical cancer among women in B.C., 1980 to 1996  
- by Z. Kashaninia.

**Volume 7 - Number 4 - May 1998**

1. The Declining Trend of Sudden Infant Death Syndrome: Comparison with other major causes of infant mortality and deaths due to unknown causes, BC, 1985 to 1996  
- by R. Fisk, J Macdonald, W. Vander Kuyl with editorial comments by S. Peck.

**Volume 8 - Numbers 1 & 2 - December 1998**

1. Animal Caused Fatalities, British Columbia, 1969 to 1997 - by R. Armour and J. Macdonald.

**Volume 8 - Number 3 - March 1999**

1. The Impact of Infectious Diseases on Mortality in BC, 1990-1997 - by Z. Kahaninia.

**Volume 8 - Number 4 - August 1999**

1. Hepatitis Deaths in British Columbia, 1990-1998 - by Z. Kashaninia.

**Volume 9 - Numbers 1 & 2 - October 1999**

1. Drowning and Other Water-Related Accidental Fatalities, British Columbia, 1990 to 1998  
- by Z. Kashaninia, J. Macdonald and R. Armour.

**Volume 9 - Number 3 - March 2000**

1. Fire Deaths in British Columbia, 1986 to 1998 - by Z. Kashaninia.

**Volume 9 - Number 4 - June 2000**

1. Beautiful and Deadly British Columbia: Natural Enviromental Deaths, 1985 to 1998  
- by T. Stubbings and J. Macdonald.

**Volume 10 - Number 1 - October 2000**

1. Tuberculosis and Mycobacterium: Impact on Mortality in British Columbia, 1990 to 1999  
- by Z. Kashaninia.

**Volume 10 - Number 2 & 3 - December 2000**

1. The Health Status Registry - adapted from original reports by M Silver.

**Volume 10 - Number 4 - July 2001**

1. The Impact of ICD-10 (in year 2000) on identifying, classifying, coding and UCOD selecting neoplasm(s) on death records - by J. Macdonald and R. Armour.

## Editor's Note:

Due to a new Government cost constraint directive, the *Quarterly Digest*, beginning with this issue, will only be published at the BC Vital Statistics web-site. Regular subscribers will be receiving notification of availability and information regarding distribution options.

## Contributors' Note

The editorial staff would like to invite any researchers of health-related topics who wish to contribute an article or paper summary for publication in this *Quarterly Digest* to contact the Information and Resource Management Branch of the British Columbia Vital Statistics Agency. Articles should focus on health status issues in British Columbia. It is preferable that submissions be in "electronic media" format (e.g. Word, Word Perfect, Excel, Power Point, Corel, Pagemaker, etc.). Article presentation will be subject to space allowances and publishing deadlines.

## Readers' Note

This publication and the Vital Statistics Annual Report are available at our web site,  
<http://www.vs.gov.bc.ca/>

Re: "Letters to the Editor",

Please direct any comments, suggestions, questions, or criticisms regarding this publication to:

Julie Macdonald  
Information and Resource Management Branch  
British Columbia Vital Statistics Agency  
Ministry of Health Services  
PO BOX 9657 STN PROV GOVT  
VICTORIA BC V8W 9P3  
(250) 952-2558 Fax: (250) 952-2594  
e-mail: [julie.macdonald@moh.hnet.bc.ca](mailto:julie.macdonald@moh.hnet.bc.ca)







BRITISH  
COLUMBIA

Ministry of Health Services

---

VITAL STATISTICS  
MINISTRY OF HEALTH  
PO BOX 9657 STN PROV GOVT  
VICTORIA BC V8W 9P3